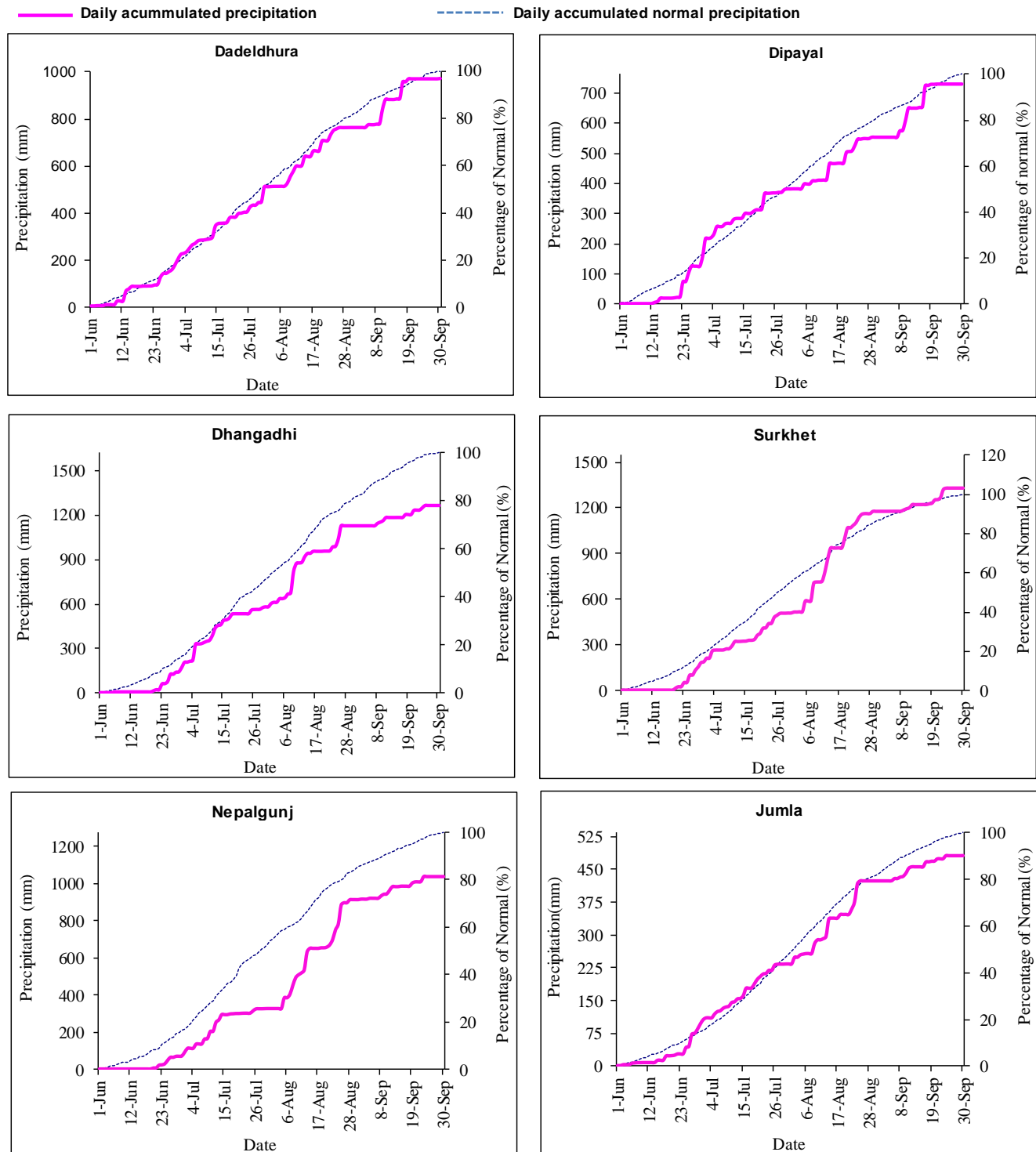




Government of Nepal  
Ministry of Energy, Water Resource and Irrigation  
Department of Hydrology and Meteorology  
Climate Division (Climate Analysis Section)  
Babarmahal, Kathmandu

30<sup>th</sup> September 2023

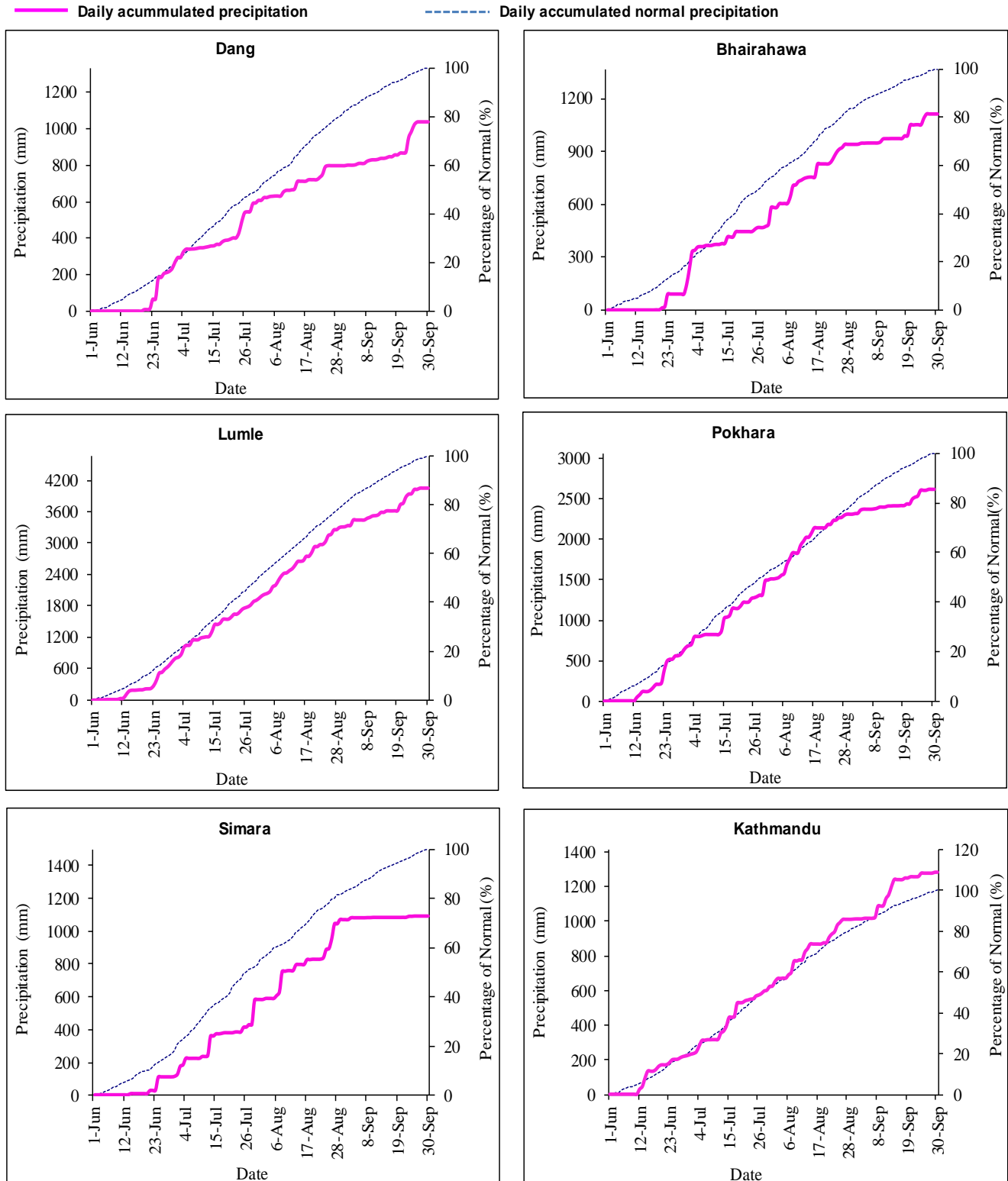
Monsoon (June - September 2023) Precipitation Monitoring



Note: The blue dotted lines (-----) in the above graphs indicate daily accumulated normal precipitation during Monsoon Season. Normal precipitation is the average of precipitation over 30 years period from 1991 -2020 and pink lines (—) in above graphs indicate the daily accumulated precipitation of this Monsoon Season.



Government of Nepal  
Ministry of Energy, Water Resource and Irrigation  
Department of Hydrology and Meteorology  
Climate Division (Climate Analysis Section)  
Babarmahal, Kathmandu



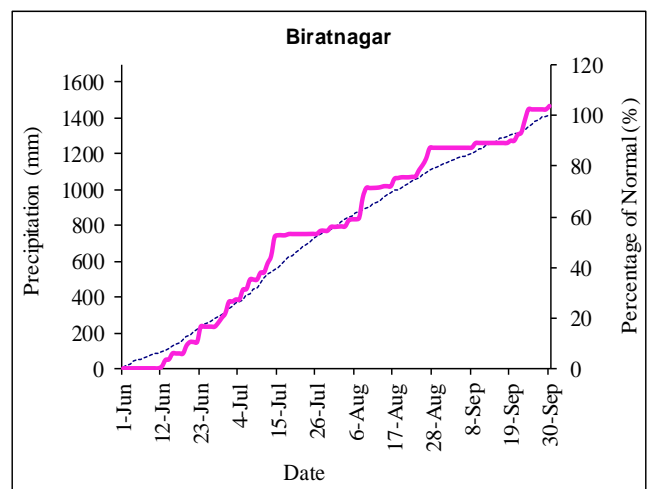
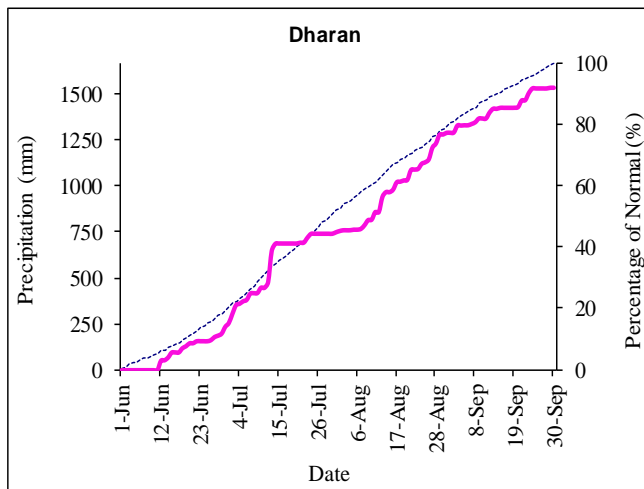
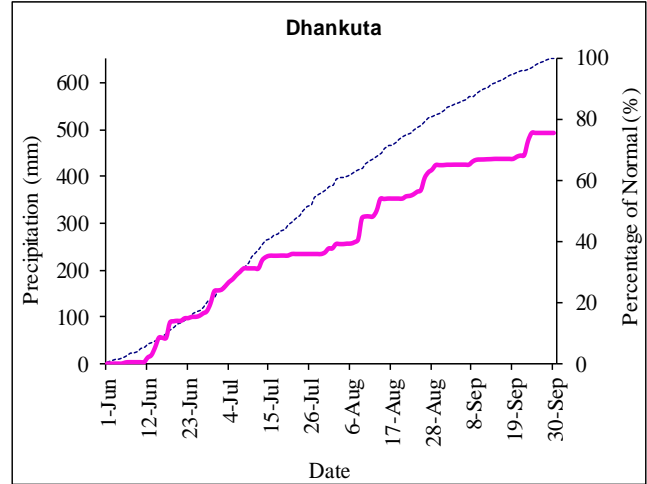
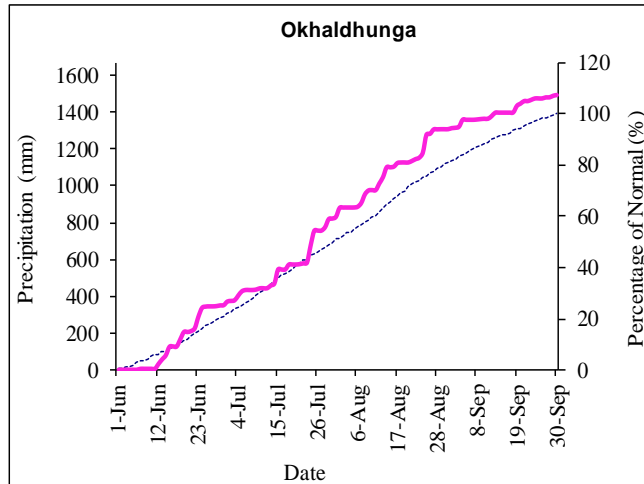
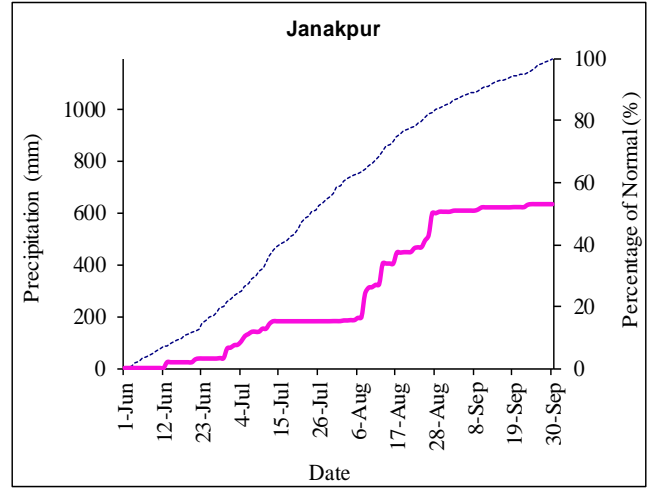
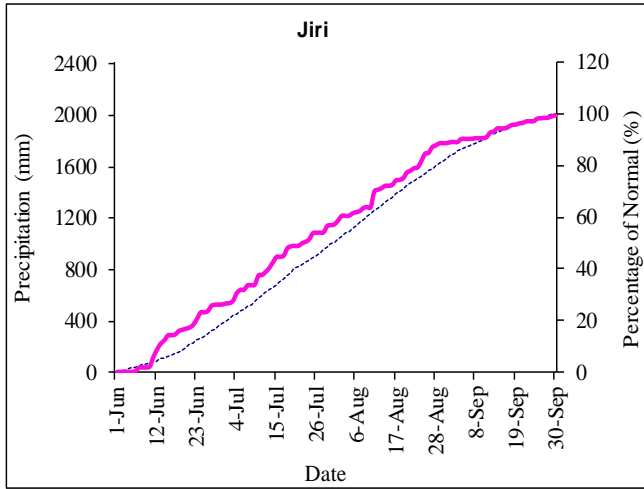
Note: The blue dotted lines (-----) in the above graphs indicate daily accumulated normal precipitation during Monsoon Season. Normal precipitation is the average of precipitation over 30 years period from 1991 -2020 and pink lines (—) in above graphs indicate the daily accumulated precipitation of this Monsoon Season.



Government of Nepal  
Ministry of Energy, Water Resource and Irrigation  
Department of Hydrology and Meteorology  
Climate Division (Climate Analysis Section)  
Babarmahal, Kathmandu

— Daily accumulated precipitation

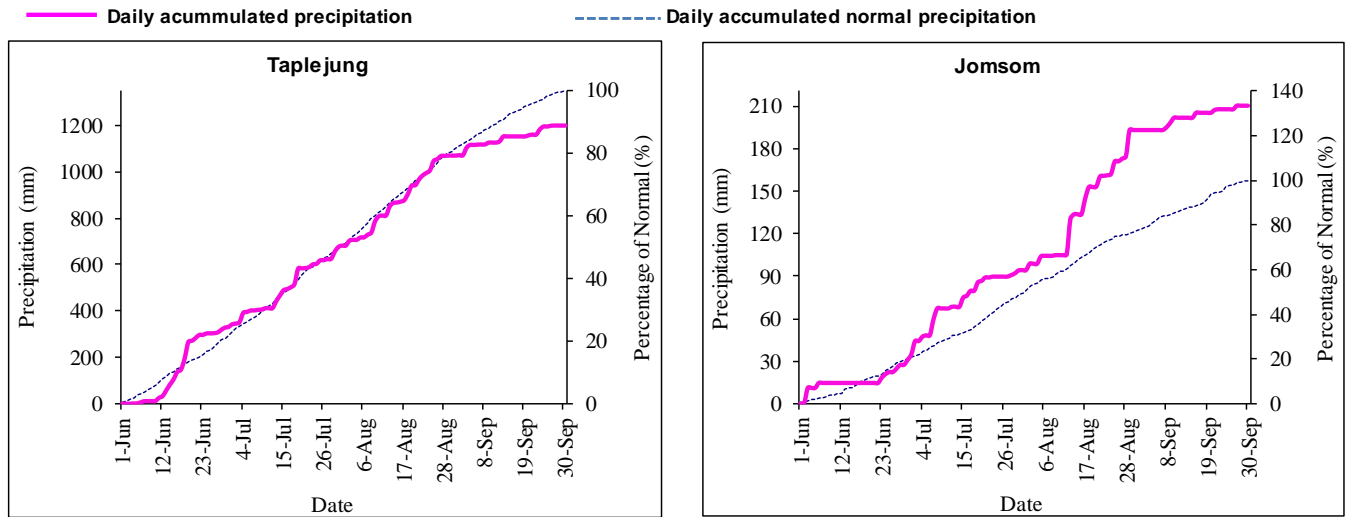
----- Daily accumulated normal precipitation



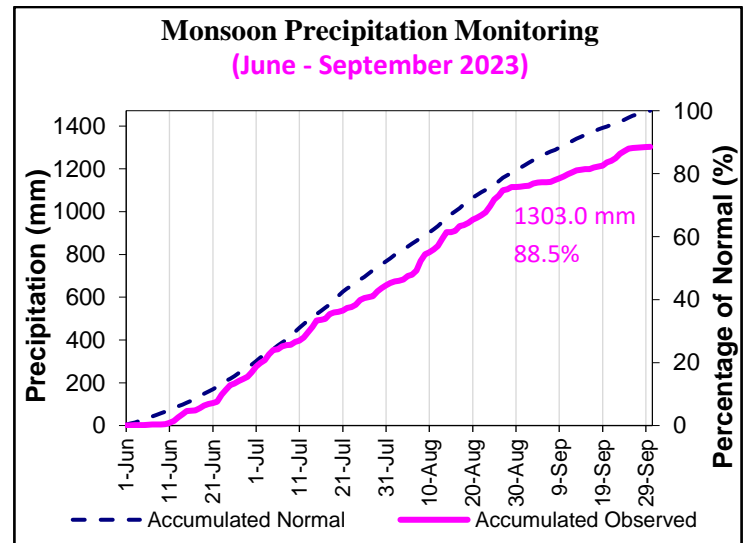
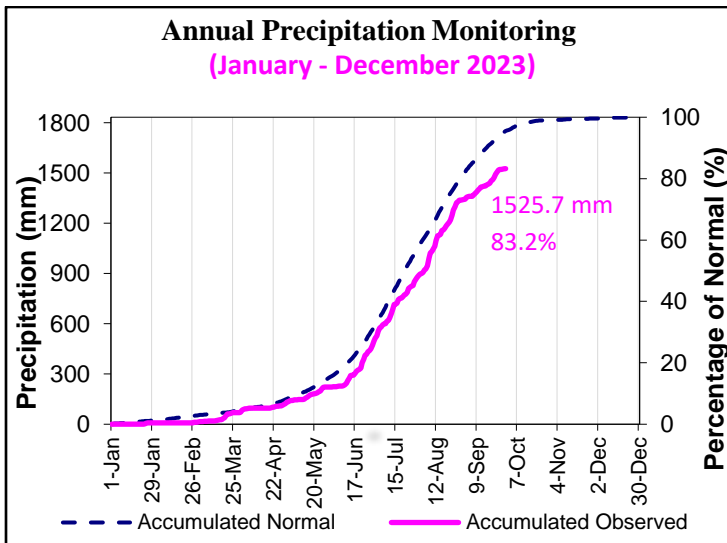
Note: The blue dotted lines (-----) in the above graphs indicate daily accumulated normal precipitation during Monsoon Season. Normal precipitation is the average of precipitation over 30 years period from 1991 -2020 and pink lines (—) in above graphs indicate the daily accumulated precipitation of this Monsoon Season.



**Government of Nepal**  
**Ministry of Energy, Water Resource and Irrigation**  
**Department of Hydrology and Meteorology**  
**Climate Division (Climate Analysis Section)**  
 Babarmahal, Kathmandu



*Note: The blue dotted lines (-----) in the above graphs indicate daily accumulated normal precipitation during Monsoon Season. Normal precipitation is the average of precipitation over 30 years period from 1991 -2020 and pink lines (—) in above graphs indicate the daily accumulated precipitation of this Monsoon Season.*

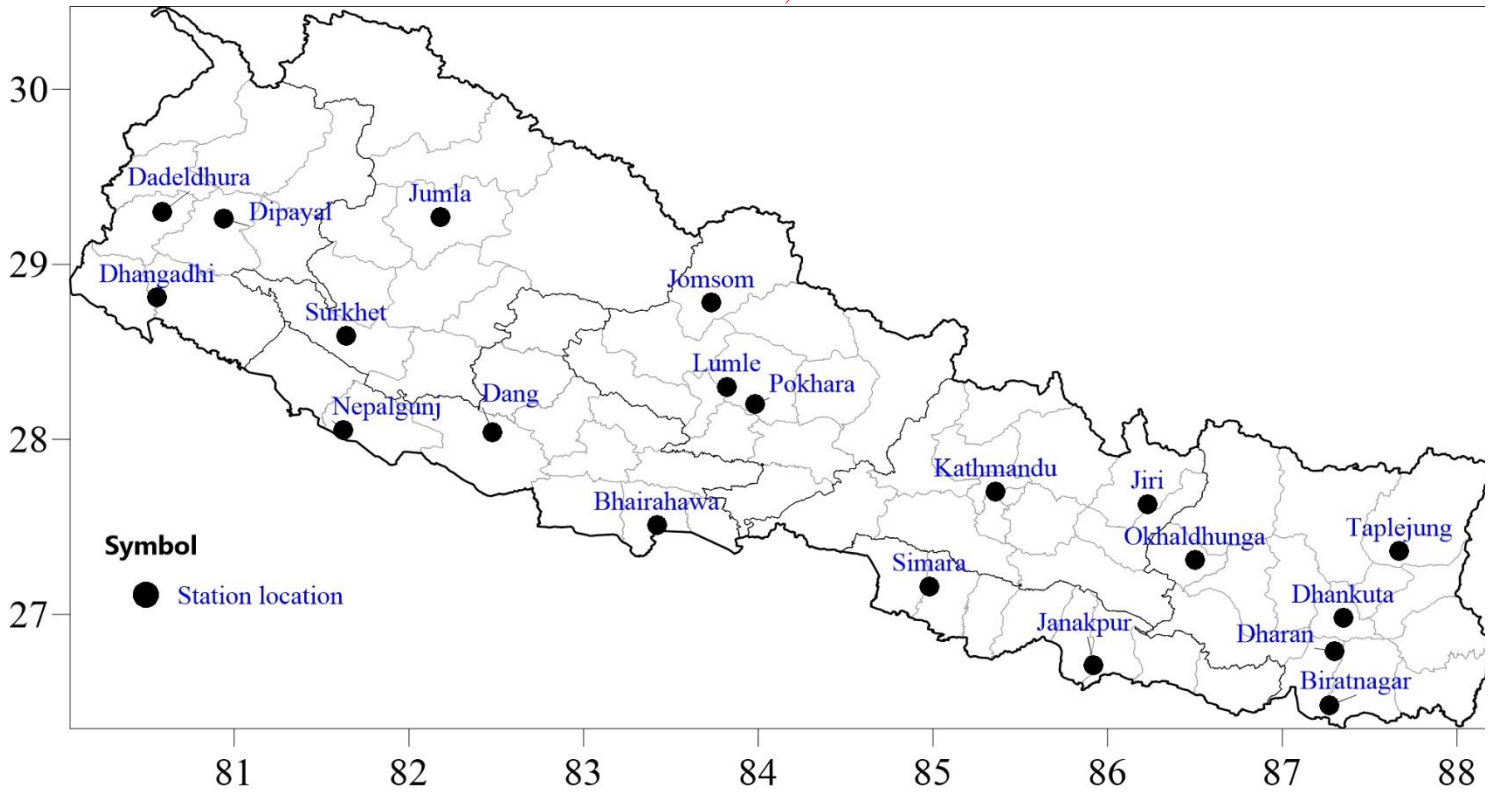


In the above graph, blue dashed (-----) line indicates the average of daily accumulated normal precipitation of 20 stations throughout the year (Jan - Dec) and pink solid line (—) indicates the average of daily accumulated precipitation of this year. The 20 stations are shown in the map below.

In the above graph, blue dashed (-----) line indicates the average of daily accumulated normal precipitation of 20 stations during Monsoon Season (June - September 2023) and pink solid line (—) indicates the average of daily accumulated precipitation of this Monsoon Season.



Government of Nepal  
Ministry of Energy, Water Resource and Irrigation  
Department of Hydrology and Meteorology  
Climate Division (Climate Analysis Section)  
Babarmahal, Kathmandu



Map: Location map of 20 stations used in the above graphs