

Monsoon (June –September, 2024) Precipitation Monitoring

Average Precipitation

Precipitation (mm) ↑

1,600
1,400
1,200
1,000
800
600
400
200
0

120
100
80
60
40
20
0

Percentage of Normal (%) ↑

1706.2mm
115.3%

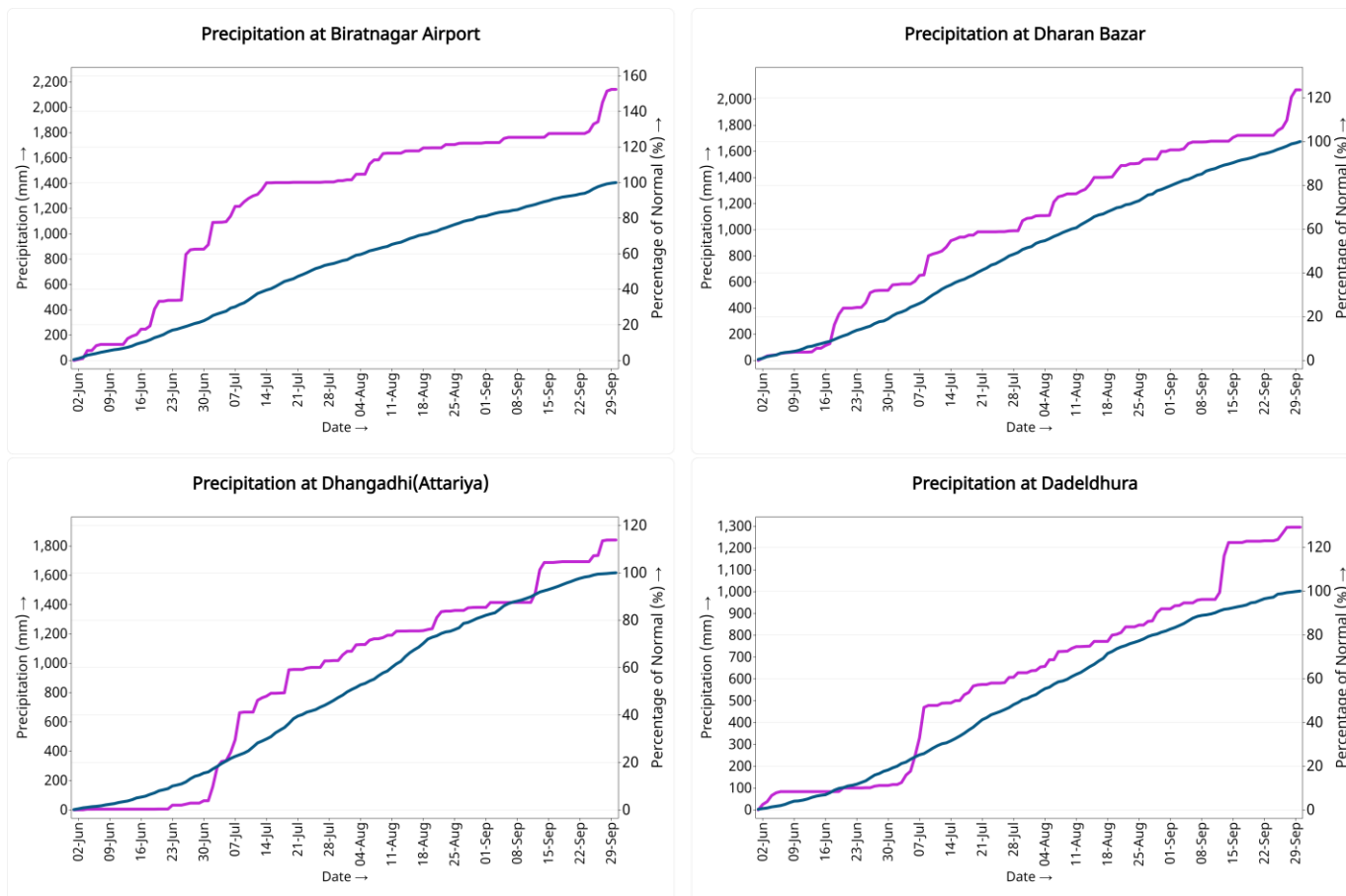
02-Jun 09-Jun 16-Jun 23-Jun 30-Jun 07-Jul 14-Jul 21-Jul 28-Jul 04-Aug 11-Aug 18-Aug 25-Aug 01-Sep 08-Sep 15-Sep 22-Sep 29-Sep

Date ↓

Symbol
● Station location

Dadeldhura, Dipayal, Junda, Komsom, Lumle, Pokhara, Sikkhet, Surpung, Dang, Bhairahawa, Kathmandu, Jiri, Oriskhang, Tankeang, Dhaulakata, Dharan, Baratangar, Janakpur, Sonada, Nepalgunj

Precipitation Monitoring of individual stations:





Government of Nepal
Ministry of Energy, Water Resource and Irrigation
Department of Hydrology and Meteorology
Climate Division (Climate Analysis Section)
Babarmahal, Kathmandu

— Daily accumulated precipitation — Daily accumulated normal *mm → millimeter

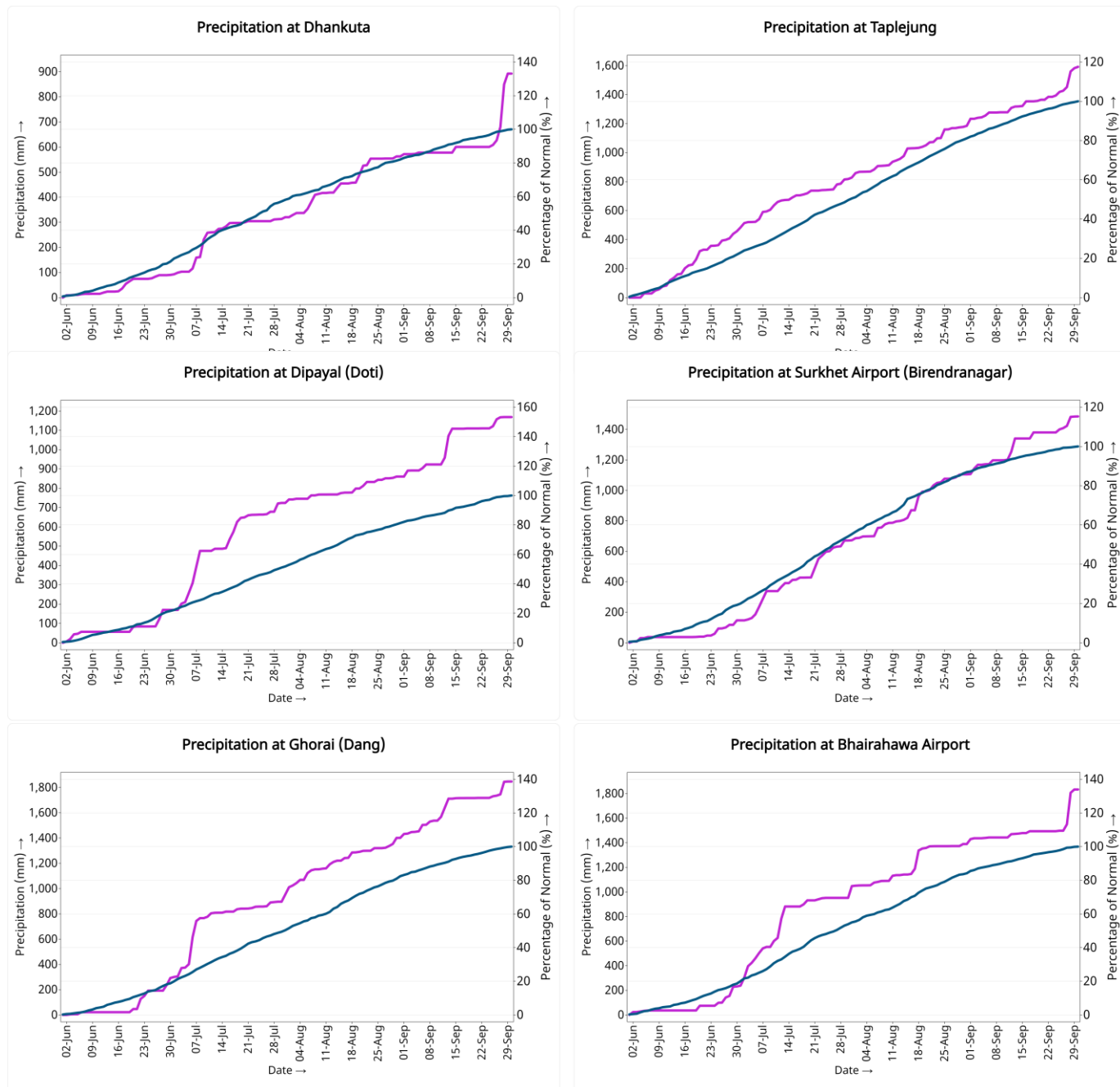


Figure: The blue lines in the above graphs indicate daily accumulated normal precipitation during Monsoon season. Normal rainfall is the average of precipitation over 30 years period from 1991 -2020 and purple lines in above graphs indicate the daily accumulated precipitation of this Monsoon season



Government of Nepal
Ministry of Energy, Water Resource and Irrigation
Department of Hydrology and Meteorology
Climate Division (Climate Analysis Section)
Babarmahal, Kathmandu

— Daily accumulated precipitation — Daily accumulated normal *mm → millimeter

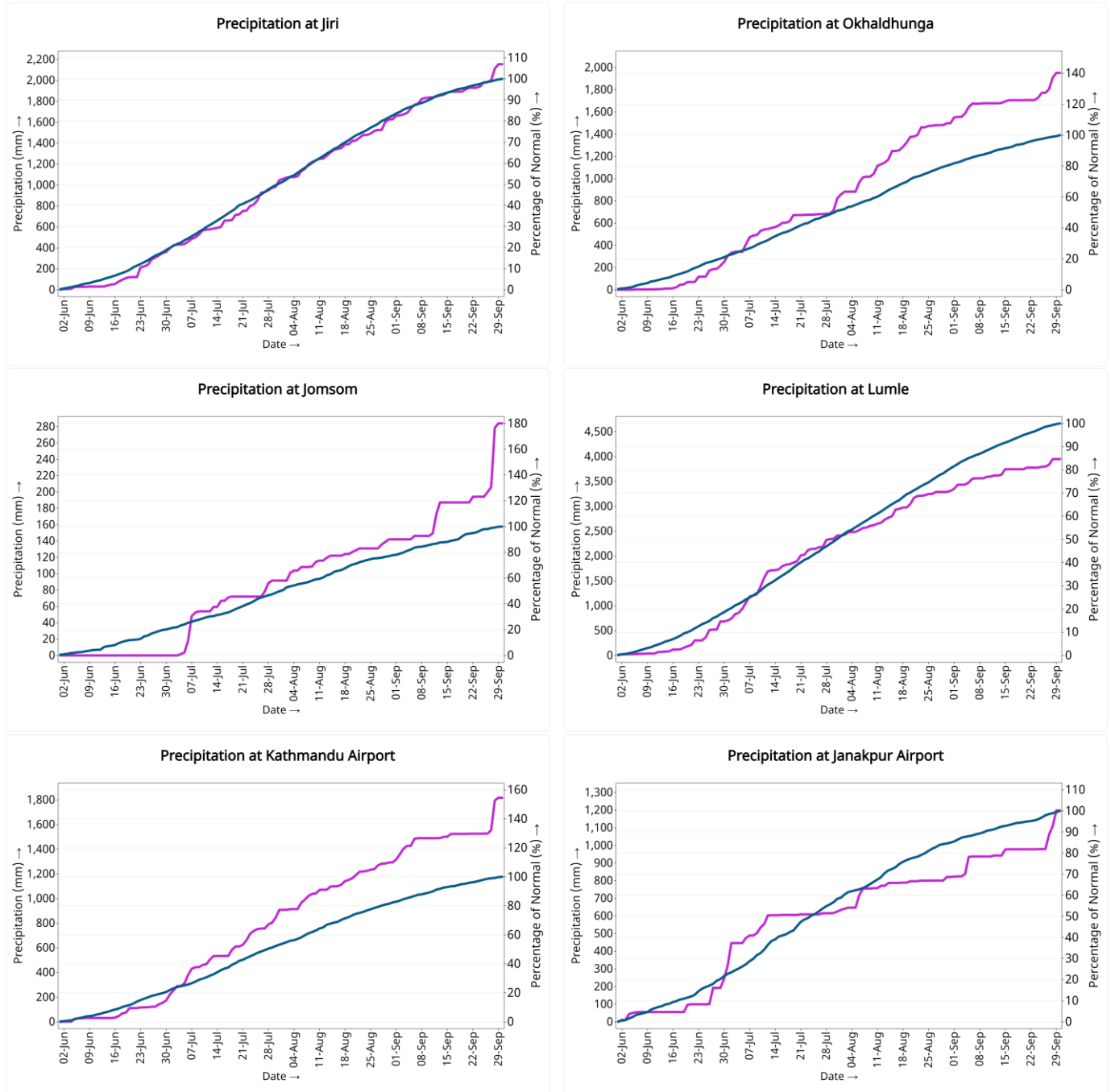


Figure: The blue lines in the above graphs indicate daily accumulated normal precipitation during Monsoon season. Normal rainfall is the average of precipitation over 30 years period from 1991 -2020 and purple lines in above graphs indicate the daily accumulated precipitation of this Monsoon season



Government of Nepal
Ministry of Energy, Water Resource and Irrigation
Department of Hydrology and Meteorology
Climate Division (Climate Analysis Section)
Babarmahal, Kathmandu

— Daily accumulated precipitation — Daily accumulated normal *mm → millimeter

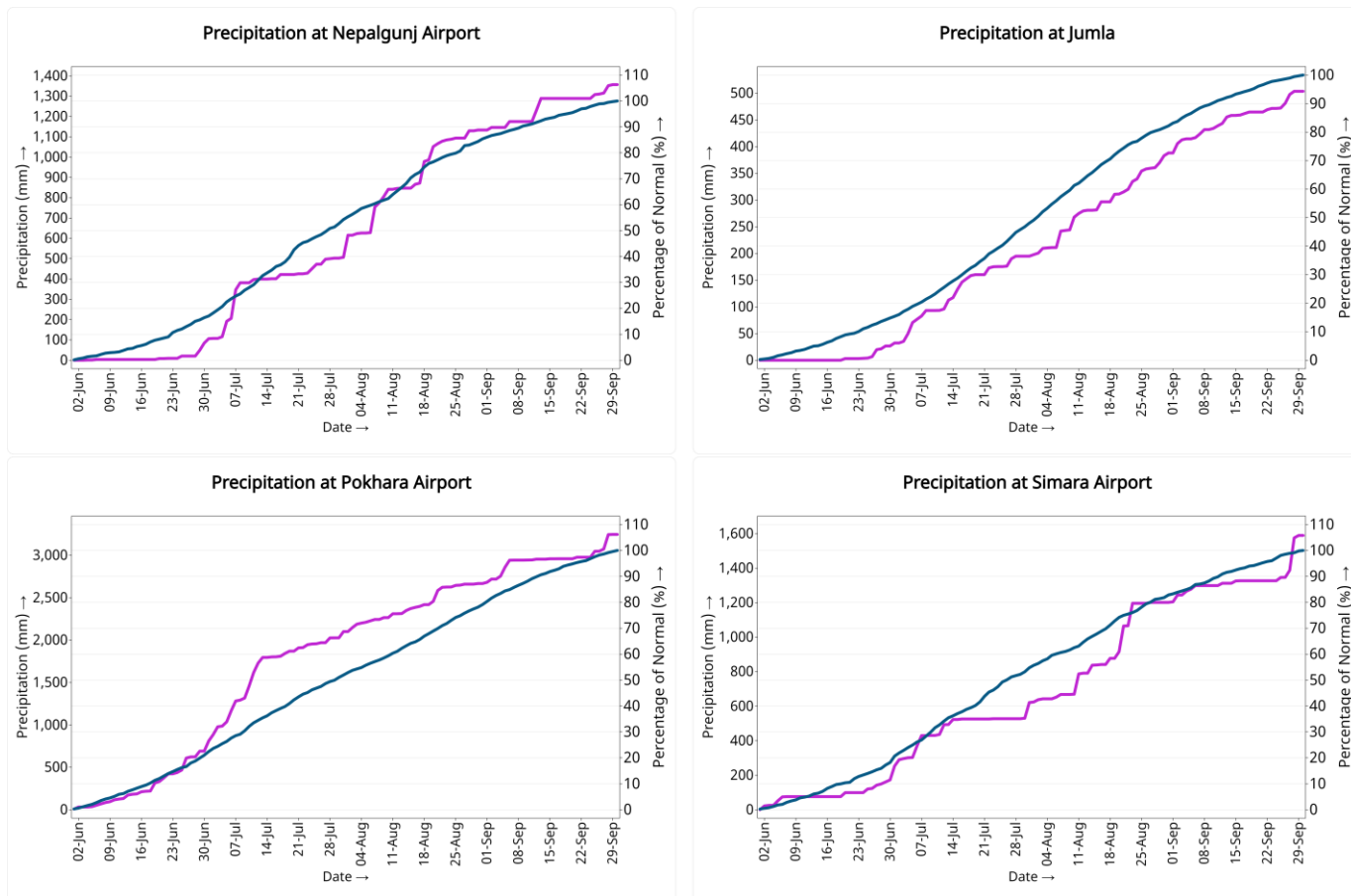


Figure: The blue lines in the above graphs indicate daily accumulated normal precipitation during Monsoon season. Normal rainfall is the average of precipitation over 30 years period from 1991 -2020 and purple lines in above graphs indicate the daily accumulated precipitation of this Monsoon season