



Government of Nepal  
Ministry of Energy, Water Resource and Irrigation  
Department of Hydrology and Meteorology  
Climate Division (Climate Analysis Section)  
Babarmahal, Kathmandu

28<sup>th</sup> November 2024

**Preliminary Precipitation and Temperature Summary  
October, 2024**

**Highlights**

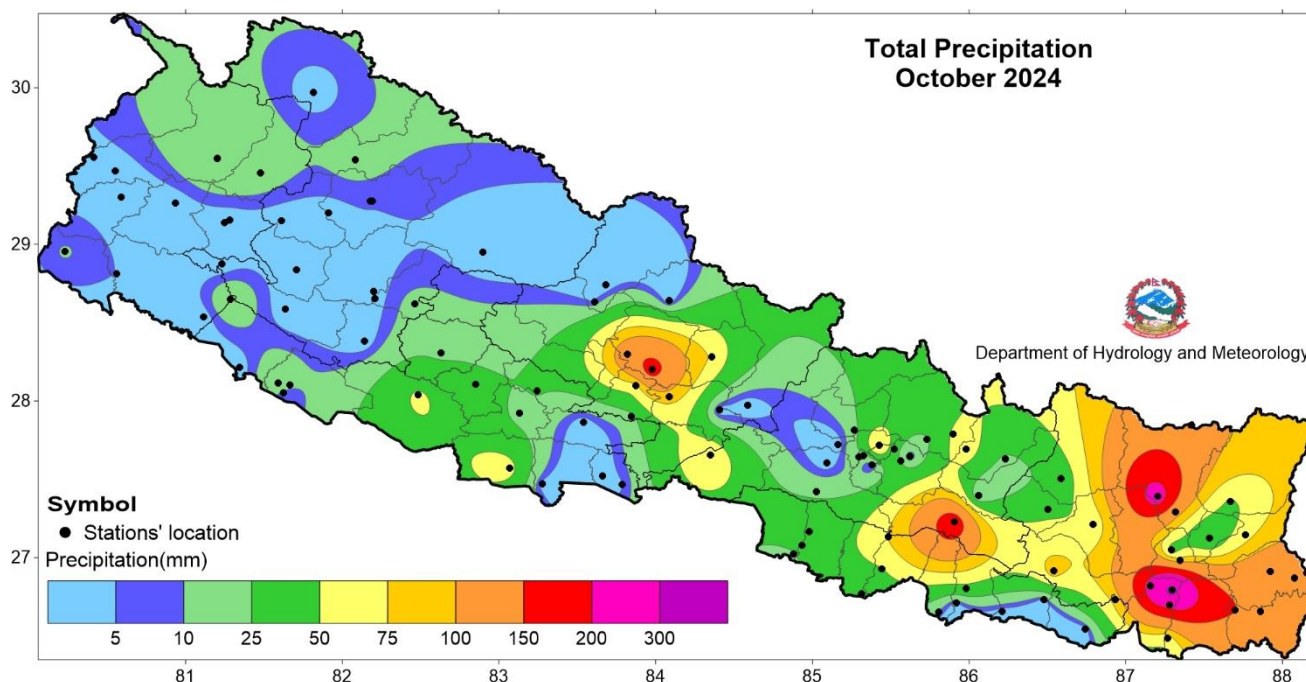
Precipitation over the country as a whole was 75.9% of the normal indicating below normal precipitation. Most parts of Sudurpaschim Province and Karnali Province, and some part of Lumbini Province, Gandaki Province, Bagamati Province and Madhesh Province faced extreme drought condition in October. Maximum temperature was below normal over central and western part of the country. Minimum temperature was below normal over northern part of the country along with eastern part of Madhesh Province and south-western part of Koshi Province.

**Synoptic Sequence**

During the first week of the month, influence of monsoonal winds and formation of cyclonic circulation over southwest Bangladesh affected the weather of the country. During the second week, western part of Nepal was influenced by western disturbance while rest of the country experienced weak monsoon. Nepal declared the withdrawal of Monsoon on 12<sup>th</sup> of October. Third and fourth week was influenced by Western disturbances.

**Precipitation**

Most part of Koshi Province, south-eastern part of Bagamati Province and central part of Gandaki Province recorded precipitation higher than 50 mm, while northern part of Karnali Province and southern part of Sudurpaschim Province recorded precipitation below 10 mm (Figure 1). Below normal precipitation was recorded over most part of the country. However, most part of Koshi Province and isolated part of Bagamati Province, Gandaki Province and Lumbini Province recorded above normal precipitation (Figure 2).



**Figure 1: Total precipitation in October 2024.**



Government of Nepal  
Ministry of Energy, Water Resource and Irrigation  
Department of Hydrology and Meteorology  
Climate Division (Climate Analysis Section)  
Babarmahal, Kathmandu

Dharan Bazar station recorded the highest monthly precipitation of 341.2 mm with the highest percentage of normal of 288.4% in October (Annex 1). Based on the average of 90 stations (stations with normal precipitation data shown in figure 2), Nepal received 75.9% of the normal precipitation. The highest daily precipitation of 118.3 mm was recorded at Chatara station on 9<sup>th</sup> October.

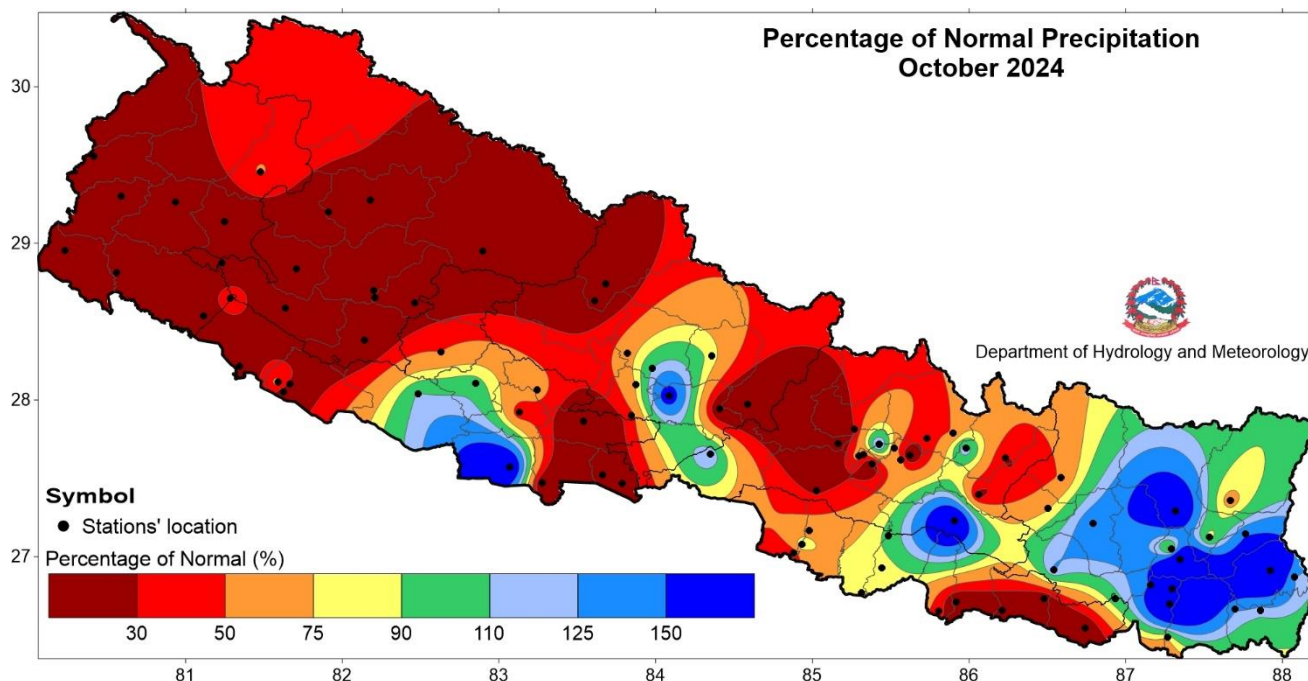


Figure 2: Percentage of normal precipitation in October 2024.

The country averaged total precipitation of October 2024 was lower than in 2022 and 2023 (Figure 3). The temporal distribution of monthly cumulative average of daily precipitation shows that precipitation remained near-normal in the first week of the month and below normal for the remaining of the period. (Figure 4).

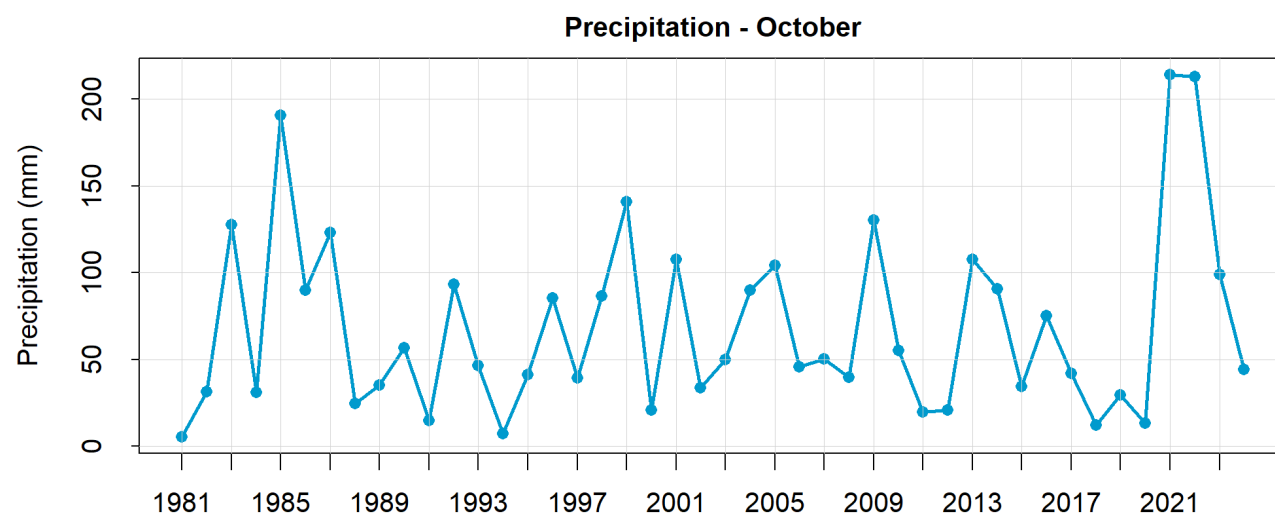


Figure 3: Monthly total precipitation of October from 1981 to 2024 of 95 stations (average of monthly total precipitation sum at stations having long term data).



Government of Nepal  
Ministry of Energy, Water Resource and Irrigation  
Department of Hydrology and Meteorology  
Climate Division (Climate Analysis Section)  
Babarmahal, Kathmandu

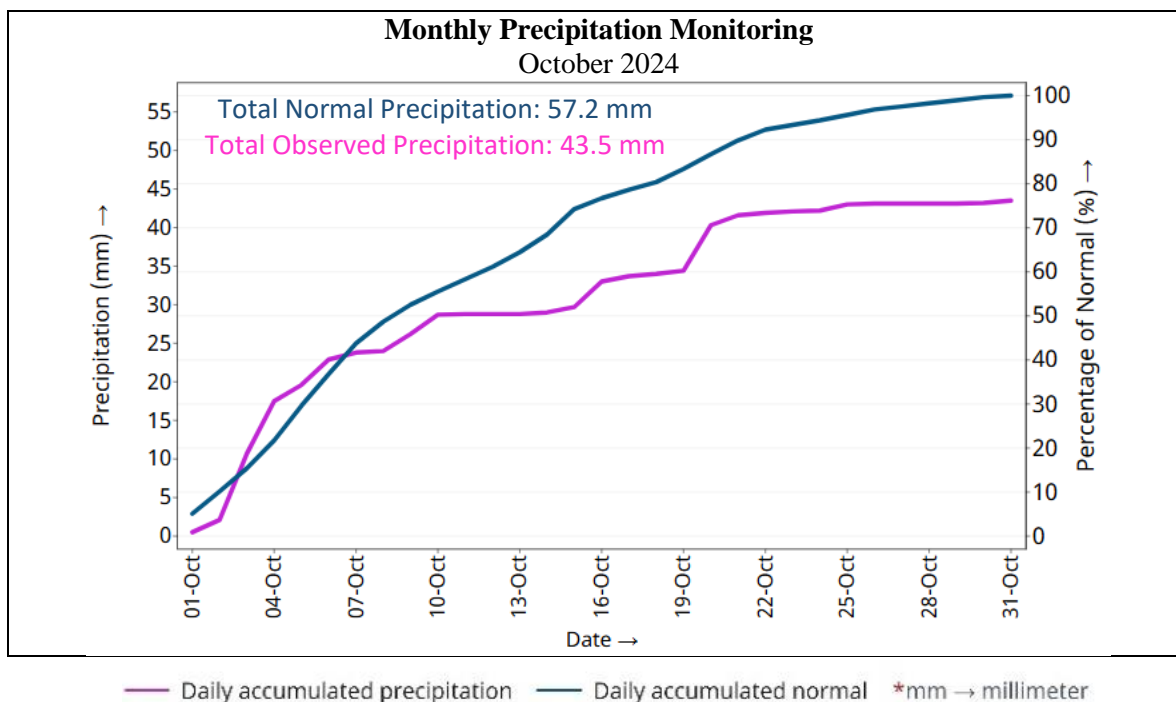


Figure 4: Cumulative average of daily normal and observed precipitation during October 2024.

### Maximum Temperature

Maximum temperature of Terai remained above 30°C, reaching over 33°C in some areas, while the northern part of country recorded below 9°C (Figure 5). Northern part of Sudurpaschim Province, most part of Karnali Province, Lumbini Province and Gandaki Province, north-western part of Bagamati Province and southern part of Koshi Province recorded below normal maximum temperature while rest of the country recorded normal to above normal maximum temperature (Figure 6).

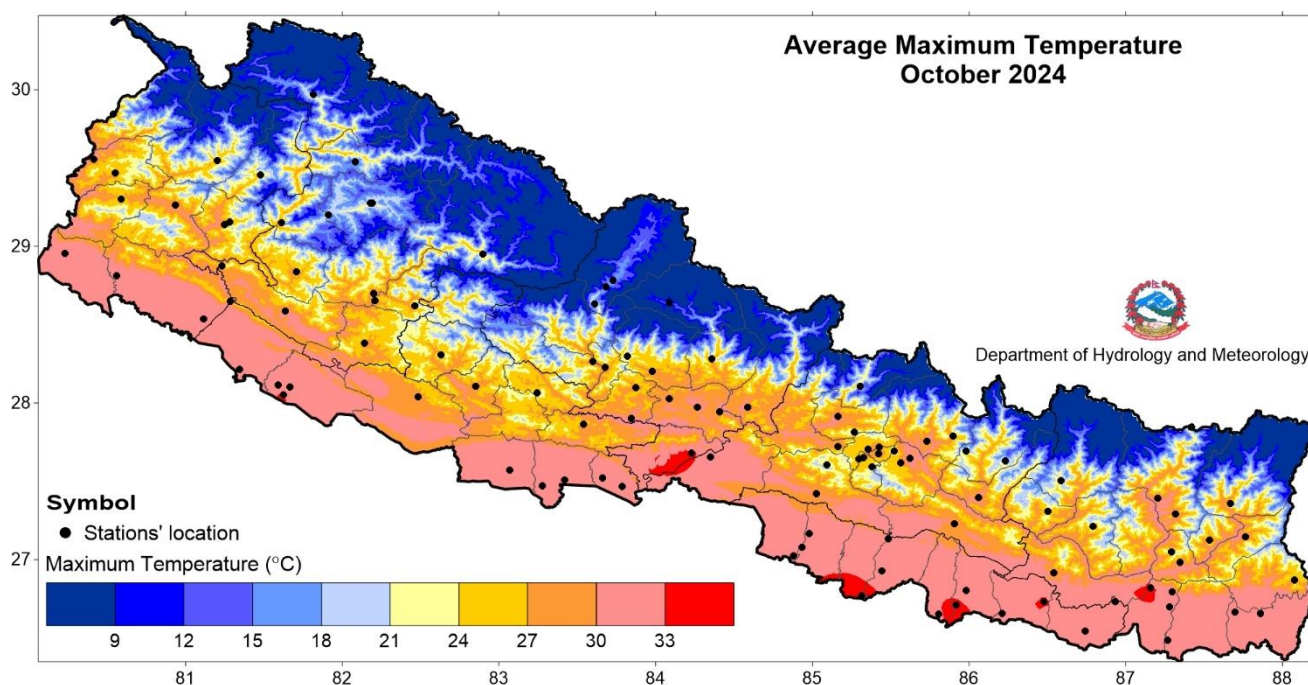


Figure 5: Maximum Temperature in October 2024.





Government of Nepal  
Ministry of Energy, Water Resource and Irrigation  
Department of Hydrology and Meteorology  
Climate Division (Climate Analysis Section)  
Babarmahal, Kathmandu

Janakpur airport station and Humde station recorded the highest and lowest monthly maximum temperature of 35.1°C and 16.5°C respectively. Similarly, the highest monthly anomaly of 4.0°C was recorded at Dhulikhel station and the lowest of -1.3°C was recorded at Ilam Tea Estate station (Annex 1). The highest daily maximum temperature of 37.0°C was recorded at Birgunj station on 8<sup>th</sup> October while the lowest daily maximum temperature of 14.0°C was recorded at Humde station on 14<sup>th</sup> October. The country averaged maximum temperature of October 2024 was higher than in 2022 and 2023 (Figure 7).

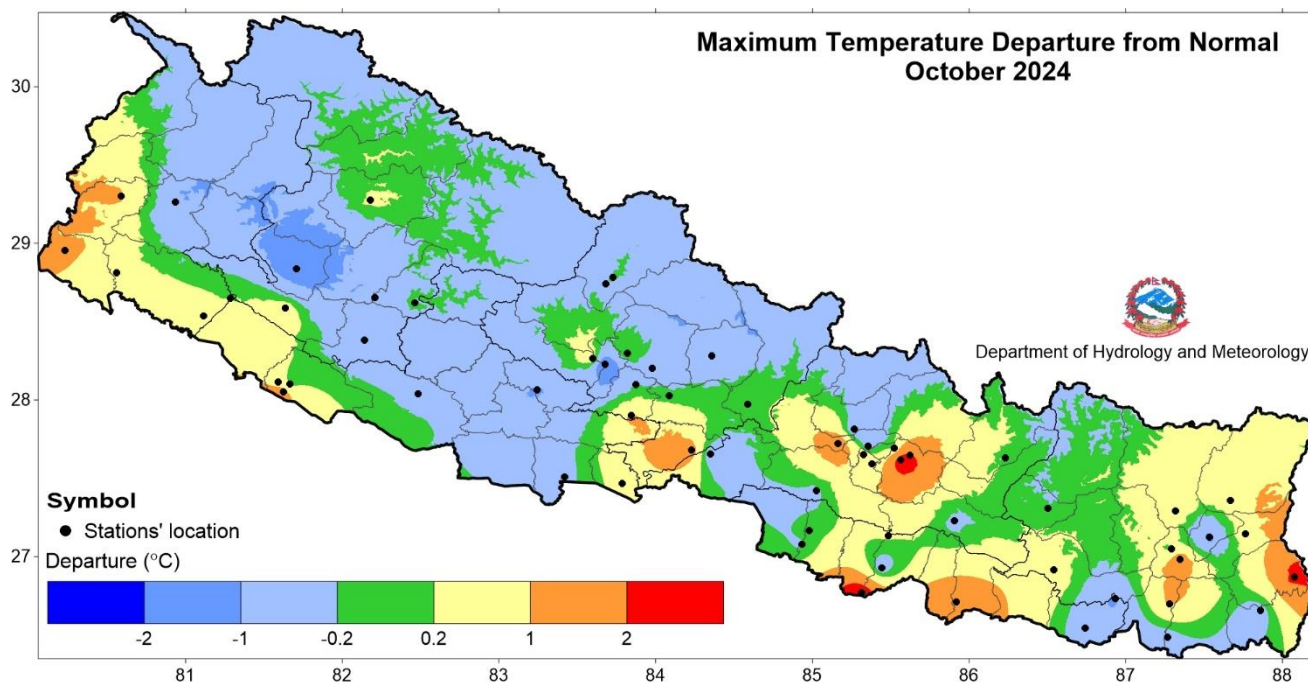


Figure 6: Departure from normal maximum temperature in October 2024.

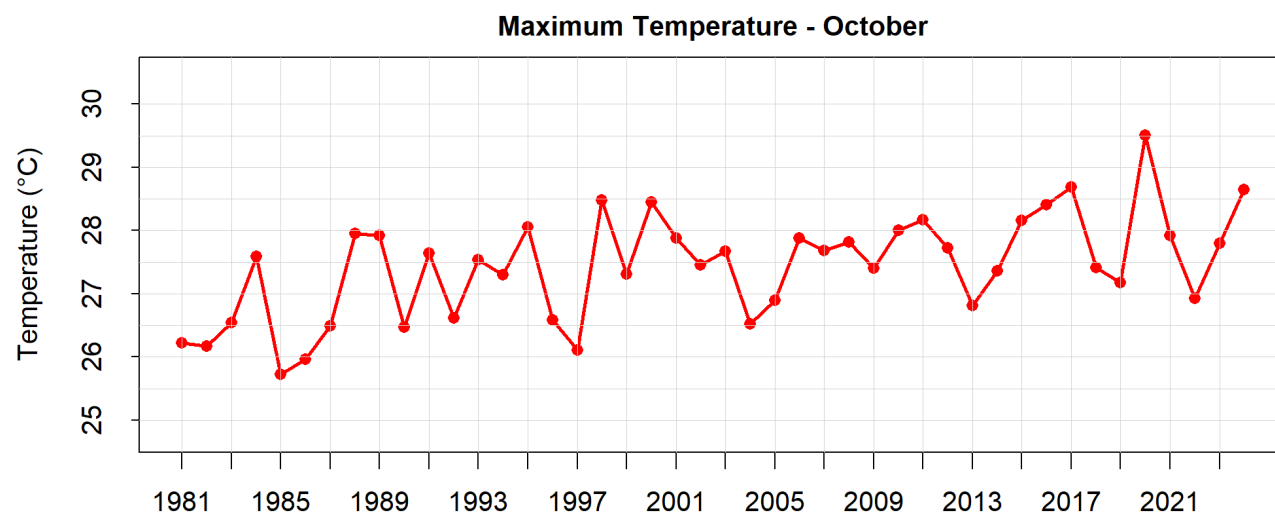


Figure 7: Monthly average maximum temperature of October from 1981 to 2024 of 57 stations (average of monthly average maximum temperature at stations having long term data).



Government of Nepal  
Ministry of Energy, Water Resource and Irrigation  
Department of Hydrology and Meteorology  
Climate Division (Climate Analysis Section)  
Babarmahal, Kathmandu

### Minimum Temperature

The minimum temperature in the Terai remained above 18°C, reaching over 21°C in some areas of eastern Terai (Figure 8). Northern part of the country along with eastern part of Madhesh Province and south-western part of Koshi Province recorded below normal minimum temperature while rest of the country recorded normal to above-normal minimum temperature (Figure 9).

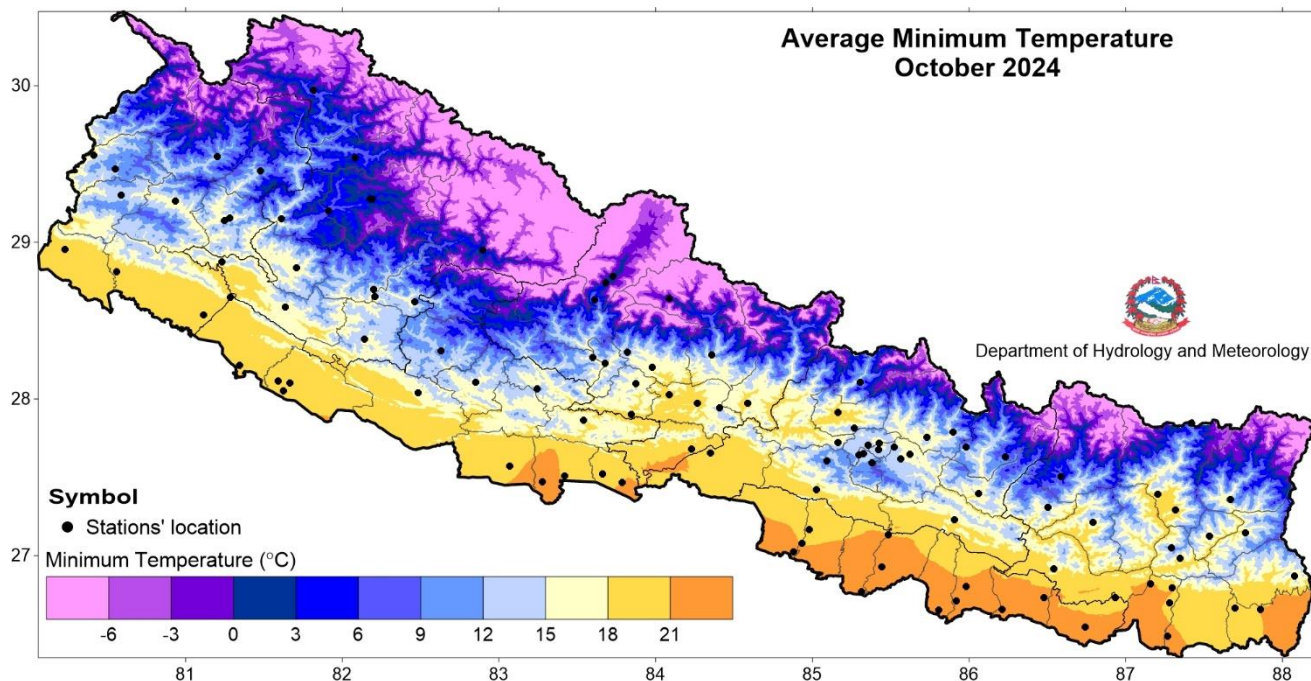


Figure 8: Minimum Temperature in October 2024.

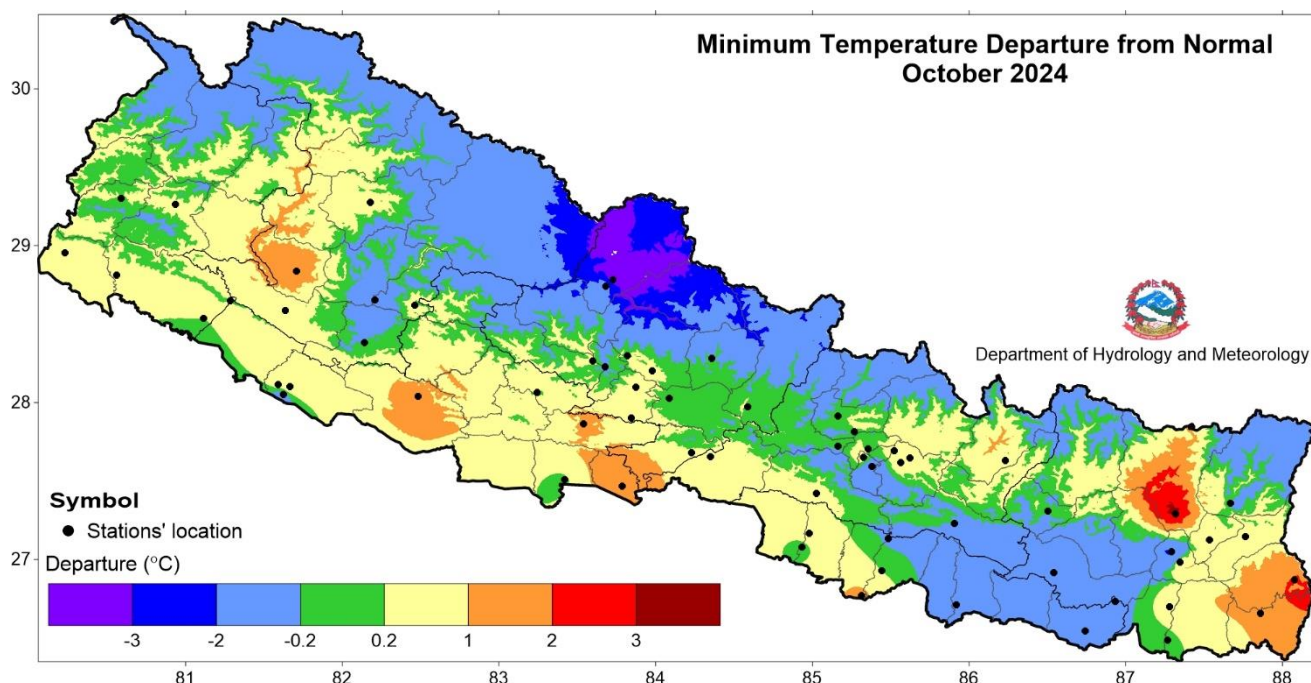
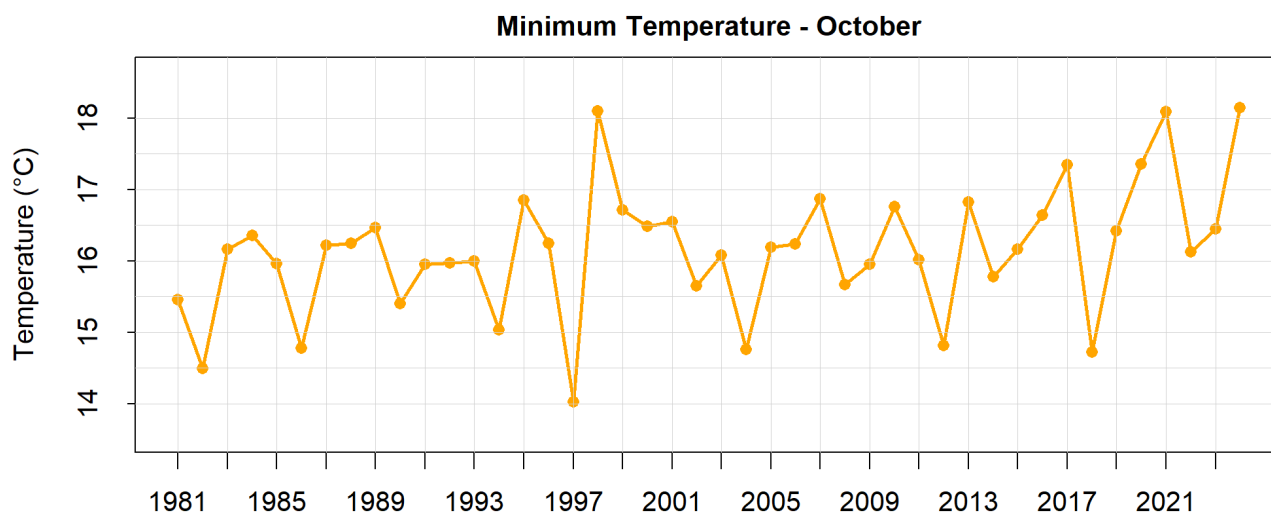


Figure 9: Departure from normal minimum temperature in October 2024.



**Government of Nepal**  
**Ministry of Energy, Water Resource and Irrigation**  
**Department of Hydrology and Meteorology**  
**Climate Division (Climate Analysis Section)**  
Babarmahal, Kathmandu

Jaleshwor station and Humde station recorded the highest and lowest monthly minimum temperature of 24.8°C and 1.9°C respectively. Similarly, the highest monthly anomaly of 5.8°C was recorded at Chainpur (East) station and the lowest anomaly of -1.7°C was recorded at Tikapur station (Annex 1). The highest daily minimum temperature of 28.5°C was recorded at Rampur station on 8<sup>th</sup> October while the lowest daily minimum temperature of -2.0°C was recorded at Humde station on 24<sup>th</sup> October. The country's average minimum temperature in October 2024 was the highest since 1981 (Figure 10).



**Figure 10: Monthly average minimum temperature of October from 1981 to 2024 of 57 stations (average of monthly average minimum temperature at stations having long term data).**

### Drought

Most parts of Sudurpaschim Province and Karnali Province, and some part of Lumbini Province, Gandaki Province, Bagamati Province and Madhesh Province faced extreme drought condition (below normal precipitation by 70%) in October (Figure 2). Drought has been categorized based on the observed precipitation compared to normal. A drought is defined as moderate, severe and extreme as given in the table below.

**Table 1: Drought category**

S.N.	Percentage of normal precipitation (%)	Drought category
1	50 - 75	Moderate drought
2	30 - 50	Severe drought
3	< 30	Extreme drought



**Government of Nepal**  
**Ministry of Energy, Water Resource and Irrigation**  
**Department of Hydrology and Meteorology**  
**Climate Division (Climate Analysis Section)**  
Babarmahal, Kathmandu

**Historical record break**

Several stations broke the previous records of October's extreme temperature in this October (Table 2 & 3).

**Table 2: List of stations breaking the October's highest daily maximum temperature in October 2024.**

S.N.	Station Name	District	Record break maximum temperature (°C)/Date	Previous highest maximum temperature (°C)/Date
1	Janakpur Airport	Dhanusa	37.5/2024-10-09	36.6/2017-10-06
2	Simikot	Humla	28.5/2024-10-29	27.2/2004-10-02
3	Chautara	Sindhupalchowk	30.8/2024-10-02	30.7/2022-10-01
4	Chapakot	Syangja	35.4/2024-10-01	35.0/2022-10-03
5	Humde	Manang	22.4/2024-10-01	20.0/2016-10-01

**Table 3: Station breaking October's highest daily precipitation in October 2024.**

S.N.	Station Name	District	Record break daily precipitation (mm)/Date	Previous highest precipitation(mm)/Date
1	Khadbari	Sankhuwasabha	78.5/2024-10-04	69.1/2019-10-10





**Government of Nepal**  
**Ministry of Energy, Water Resource and Irrigation**  
**Department of Hydrology and Meteorology**  
**Climate Division (Climate Analysis Section)**  
**Babarmahal, Kathmandu**

**Annex 1: Monthly precipitation and temperature data of October 2024**

Station	Latitude	Longitude	Elevation	Precipitation						Temperature						
				Total (mm)	% of Normal	No. of Rainy Days				24hr Highest precipitation (mm)/Date	Maximum			Minimum		
						≥1.0mm	≥10.0mm	≥25.0mm	≥50.0mm		Average (°C)	Departure from normal (°C)	Highest temperature / Date	Average (°C)	Departure from normal (°C)	Lowest temperature / Date
Bahrabise	27.7887	85.9000	884	52.6	52.6	5	1	1	0	28.5/3	31.9	-	33.5/1	19.0	-	14.2/26
Baitadi (Gothalapani)	29.5574	80.4132	1352	2.5	9.4	1	0	0	0	2.5/11	29.9	-	-	14.6	-	0/29
Bajura (Martadi)	29.4570	81.4804	1598	17.4	52.6	4	0	0	0	8.2/19	26.4	-	28.5/2	14.6	-	12/21
Bandipur	27.9418	84.4064	991	0.7	1.5	0	0	0	0	0.7/6	28.8	-	30/3	14.9	-	12.5/23
Bhairahawa Airport	27.5068	83.4204	108	-	-	-	-	-	-	-	34.0	1.5	36.7/3	23.2	2.6	-
Bhaktapur	27.6767	85.4240	1315	-	-	-	-	-	-	-	29.2	-	-	15.7	-	-
Bijuar Tar	28.1035	82.8520	835	30.6	101.3	2	1	1	0	27.4/6	32.5	-	34/2	19.2	-	16.4/24
Biratnagar Airport	26.4840	87.2670	72	55.9	73.9	3	2	1	0	41.2/3	31.4	-0.5	-	23.3	1.9	19.5/22
Birganj	27.0232	84.8782	67	16.5	30.2	2	1	0	0	11.3/20	33.8	-	37/8	24.1	-	21.5/20
Chainpur (East)	27.2921	87.3170	1277	117.2	221.9	3	1	1	1	100.1/16	28.3	2.5	30/1	20.4	5.8	19/4
Chainpur (Bajhang)	29.5459	81.2011	1405	26.0	-	3	1	0	0	18.8/4	27.6	-	29.8/2	13.9	-	10/23
Changu Narayan	27.7161	85.4268	1502	82.8	141.3	1	1	1	1	82.8/3	29.2	-	30.5/1	16.3	-	13.5/22
Chapakot	27.8999	83.8459	617	18.5	39.4	1	1	0	0	18.5/21	33.4	3.4	35.4/2	20.3	2.2	17.2/22
Charikot	27.6902	85.9802	2132	65.2	125.5	6	2	0	0	23.8/3	21.6	-	24.3/1	12.0	-	9/21
Chatara	26.8204	87.1592	105	220.6	152.5	9	4	3	1	118.3/9	33.3	-	35.4/1	23.0	-	20.6/21
Chaurjhari Tar	28.6540	82.2103	863	2.0	5.9	1	0	0	0	2/7	28.6	0.5	30.5/1	-	-	-
Chautara	27.7538	85.7321	1552	21.8	36.8	3	1	0	0	13.5/20	28.6	-	30.8/2	15.3	-	10.6/21
Chisapani (Karnali)	28.6472	81.2854	201	22.9	48.2	2	1	0	0	21.9/6	32.9	2.2	34.5/3	22.5	2.0	20.5/14
Dadeldhura	29.3014	80.5878	1879	0.0	0.0	0	0	0	0	NR	24.8	2.1	27.4/2	13.2	1.5	10.6/21
Dailekh	28.8381	81.7085	1394	0.0	0.0	0	0	0	0	NR	26.6	0.9	28.6/2	13.3	0.2	-
Damak	26.6623	87.6988	119	150.8	126.5	4	4	2	1	72.6/3	32.1	-	34/1	20.4	-	16/22
Daman	27.6044	85.0920	2265	1.0	-	1	0	0	0	1/6	21.6	-	25.3/2	10.9	-	8.7/22
Damauli	27.9737	84.2651	347	-	-	-	-	-	-	-	33.1	-	-	22.1	-	-
Darchula New	29.8429	80.5388	887	7.8	-	4	0	0	0	2.8/5	31.7	-	33.6/2	17.3	-	13.2/23
Dhangadhi (Attariya)	28.8127	80.5600	184	4.9	9.8	1	0	0	0	4.4/26	33.7	2.0	-	22.1	3.1	19/23
Dhankuta	26.9832	87.3460	1192	90.6	257.4	3	2	1	1	78.4/4	28.0	1.9	30.1/1	17.1	1.3	14.2/21
Dharan Bazar	26.7922	87.2978	310	341.2	288.4	10	9	6	2	95.6/10	30.8	-	32.2/8	22.1	-	19.2/21
Dhulikhel	27.6161	85.5655	1543	29.0	62.9	3	1	0	0	24/22	26.4	4.0	29.5/2	15.0	2.3	12/21
Dhunchhe	28.1053	85.3077	2005	-	-	-	-	-	-	-	22.5	-	25/2	11.9	-	9/21
Dhunibesi	27.7229	85.1643	991	0.0	0.0	0	0	0	0	NR	30.5	3.1	32/1	18.5	1.4	16.1/21
Diktel	27.2125	86.7919	1612	52.5	144.9	3	2	1	0	35.3/4	23.5	-	25.4/10	16.1	-	14/21
Dipayal (Doti)	29.2621	80.9369	563	0.0	0.0	0	0	0	0	NR	32.8	1.2	34.3/2	19.6	3.1	14.5/23
Dunai	28.9507	82.8960	2098	0.0	0.0	0	0	0	0	NR	-	-	-	5.5	-	2.5/16
Gaida (Kankai)	26.6569	87.8607	107	140.0	115.8	8	6	1	1	53.2/16	32.4	-0.1	34.5/1	23.0	3.1	19/22
Gaur	26.7671	85.3130	77	36.2	86.4	4	1	0	0	20/23	33.5	2.2	35.3/5	22.9	1.9	20.3/21
Ghorai (Dang)	28.0372	82.4842	663	54.1	111.8	1	1	1	1	53.6/6	30.6	1.5	32/2	19.8	3.5	18/12
Godavari	27.5929	85.3788	1527	3.9	8.6	2	0	0	0	2.2/3	26.3	2.6	28.5/1	12.4	0.0	9.5/22
Gorkha (Birechowk)	27.9714	84.5894	724	0.0	0.1	0	0	0	0	0.01/6	31.0	2.7	32.5/1	19.6	1.8	17/23
Gulariya	28.2128	81.3452	126	0.0	0.0	0	0	0	0	NR	33.6	-	34.8/3	20.6	-	17.5/23
Hardinath	26.8000	85.9833	93	40.3	-	1	1	1	0	39.5/20	31.7	-	33.2/9	23.2	-	19.8/20
Hetauda N.F.I.	27.4202	85.0252	452	21.4	27.1	2	1	0	0	19.8/4	31.0	0.7	32.4/8	20.5	2.2	16.7/22
Humde	28.6399	84.0881	3401	0.6	-	0	0	0	0	0.6/4	16.5	-	22.4/1	1.9	-	-2/24
Ilam Tea Estate	26.9096	87.9231	1208	136.8	229.9	4	3	1	1	104.8/3	23.6	-1.3	25.4/2	17.7	1.1	15.6/25
Jajarkot	28.6990	82.2001	1236	1.5	3.0	1	0	0	0	1.5/21	28.5	-	31/2	-	-	-





**Government of Nepal**  
**Ministry of Energy, Water Resource and Irrigation**  
**Department of Hydrology and Meteorology**  
**Climate Division (Climate Analysis Section)**  
**Babarmahal, Kathmandu**

Station	Latitude	Longitude	Elevation	Precipitation							Temperature						
				Total (mm)	% of Normal	No. of Rainy Days				24hr Highest precipitation (mm)/Date	Maximum			Minimum			No. of days with maximum temp. > 30°C
						≥1.0mm	≥10.0mm	≥25.0mm	≥50.0mm		Average (°C)	Departure from normal (°C)	Highest temperature / Date	Average (°C)	Departure from normal (°C)	Lowest temperature / Date	
Jalesor	26.6522	85.8073	68	9.2	42.6	2	0	0	0	8/3	33.1	-	35/2	24.8	-	23/20	16
Janakpur Airport	26.7097	85.9172	76	1.4	2.6	1	0	0	0	1.4/20	35.1	3.1	-	23.9	1.7	21/20	-
Jiri	27.6304	86.2321	1877	21.3	28.9	6	1	0	0	10.2/4	23.2	1.4	25.5/1	11.9	2.5	7.7/21	0
Jumla	29.2747	82.1796	2363	6.3	24.6	2	0	0	0	4.5/20	25.5	3.1	27.4/1	7.6	3.0	2.6/13	0
Jumla Airport	29.2740	82.1942	2384	5.6	-	2	0	0	0	3.5/20	24.7	-	26.7/1	6.3	-	1.6/13	0
Kakani	27.8113	85.2674	2002	17.5	26.4	2	1	0	0	15.8/6	21.3	0.2	23.7/2	13.0	0.5	10.3/21	0
Kanyam Tea Estate	26.8681	88.0783	1570	125.8	125.7	7	3	1	1	73/3	23.1	0.9	25/10	15.6	2.5	12/30	0
Karmaiya	27.1330	85.4841	139	75.0	96.0	3	3	2	0	32/20	32.5	0.5	33.5/7	23.5	1.3	20.5/20	16
Kathmandu Airport	27.7038	85.3562	1337	-	-	-	-	-	-	-	28.8	1.6	31.2/1	16.4	2.5	13.8/21	3
Khadbari	27.3911	87.2044	1064	234.4	-	12	5	4	2	78.5/4	28.3	-	31.5/1	19.3	-	17/24	2
Khairini Tar	28.0270	84.0866	515	86.8	175.4	7	4	1	0	30.4/20	32.3	2.3	34.5/1	20.7	1.5	16.9/21	15
Khajura (Nepalganj)	28.1137	81.5903	129	24.5	57.5	1	1	0	0	24.5/25	33.7	1.8	35/3	22.1	2.6	20/13	16
Khanchikot	27.9221	83.1298	1801	18.9	37.5	2	1	0	0	15.4/17	25.1	3.1	27.9/6	14.8	1.3	12.8/17	0
Khokana	27.6438	85.2967	1309	24.1	63.4	1	1	0	0	24.1/3	28.2	-	29.8/1	14.5	-	10.7/22	0
Khudi Bazar	28.2822	84.3564	838	73.3	85.4	8	2	1	0	25.7/9	30.0	1.4	31.5/1	16.0	-0.1	13/21	11
Khumaltar	27.6517	85.3257	1334	14.4	42.1	1	1	0	0	14.2/3	28.8	2.7	31/1	16.5	2.9	13/22	3
Lahan	26.7327	86.4776	110	2.0	3.4	1	0	0	0	2/3	34.4	-	36/9	23.1	-	19.5/22	16
Lete	28.6327	83.6092	2490	5.8	12.0	3	0	0	0	3/18	20.3	-	22.5/2	9.0	-	5.5/21	0
Libang Gaun	28.3062	82.6323	1314	21.3	51.0	1	1	0	0	21/7	28.5	-	31/1	15.6	-	12/23	2
Lumbini	27.4703	83.2761	95	2.5	4.7	1	0	0	0	2.5/22	33.0	-	34.5/7	23.4	-	21/16	16
Lumle	28.2965	83.8179	1738	131.9	63.4	16	4	1	0	49.5/4	22.7	1.1	25.5/2	14.2	1.3	10.6/21	0
Mahendra Nagar	28.9548	80.2305	197	11.2	23.1	1	1	0	0	11.2/6	33.7	2.3	34.8/3	21.7	3.1	19/23	16
Mangalsen	29.1361	81.2501	1310	0.0	0.0	0	0	0	0	NR	26.4	-	28.4/14	15.9	-	12.4/23	0
Manma	29.1488	81.6135	1729	0.0	-	0	0	0	0	0.01/20	25.6	-	27.5/2	13.8	-	11.7/23	0
Manthali	27.3947	86.0612	497	7.5	22.7	1	0	0	0	7.5/20	33.0	-	35.3/1	20.2	-	16.5/22	16
Manusmara	26.9280	85.4451	90	47.8	79.3	2	2	1	0	34.4/20	32.0	-0.1	33.8/7	23.5	2.0	20/20	16
Musikot (Rukumkot)	28.6190	82.4625	1412	14.1	17.2	3	0	0	0	6.2/8	28.3	2.5	30.2/3	16.1	2.1	13.5/23	1
Nagarkot	27.6933	85.5209	2147	35.6	63.9	4	1	1	0	28/3	21.6	1.0	24.1/2	12.3	1.1	9.5/21	0
Nagma	29.2006	81.9106	2017	1.0	4.0	1	0	0	0	1/20	22.9	-	26.5/1	10.1	-	6.6/25	0
Nepalgunj Airport	28.1006	81.6682	165	11.4	24.3	1	1	0	0	11.4/25	33.5	1.7	34.5/14	22.9	3.1	20.8/13	16
Nepalgunj (Reg.Off.)	28.0520	81.6228	141	6.5	15.9	1	0	0	0	6.5/25	34.7	3.0	36/3	23.0	2.0	21/13	16
Nuwakot	27.9150	85.1646	966	-	-	-	-	-	-	-	30.0	-	-	19.2	1.3	-	-
Okhaldhunga	27.3081	86.5042	1731	44.6	72.9	4	1	1	0	30.8/4	24.7	1.1	26.6/1	15.3	1.6	13/21	0
Oli Gaun (Patkani)	29.1559	81.2831	989	0.0	-	0	0	0	0	0.01/27	29.0	-	32.6/3	15.6	-	12.6/24	6
Pakhribas	27.0463	87.2925	1720	40.0	77.9	2	1	1	0	36.3/4	22.5	0.5	24.2/1	14.0	0.5	10.6/17	0
Panchkhal	27.6451	85.6209	857	2.6	5.5	1	0	0	0	1.7/3	32.0	2.3	33/1	18.2	2.3	14.7/21	15
Parasi	27.5193	83.6622	112	2.0	2.9	1	0	0	0	2/20	33.5	-	34.5/3	22.3	-	20/23	16
Parwanipur	27.0789	84.9327	87	50.7	88.9	2	1	1	0	41/20	32.5	0.2	33.5/8	22.3	1.4	19.5/20	16
Patan new	29.4664	80.5506	1299	1.5	-	1	0	0	0	1.5/5	28.8	-	31/2	14.9	-	11.5/23	3
Phattepur	26.7305	86.9348	101	81.5	101.0	3	1	1	1	66/20	32.5	-0.8	37/11	23.0	1.7	20/20	16
Phidim (Panchther)	27.1437	87.7656	1157	66.2	147.4	3	2	1	0	49.1/3	29.6	1.5	32/1	18.2	2.5	15/21	9
Pokhara Airport	28.2002	83.9795	827	174.8	109.8	9	6	3	0	44.5/4	29.6	1.7	31.5/2	18.8	1.6	15.2/21	4
Pusma Camp	28.8755	81.2327	953	0.0	0.0	0	0	0	0	NR	27.8	-	29.2/1	16.9	-	13.8/21	0
Rajbiraj	26.5407	86.7425	68	0.7	1.1	0	0	0	0	0.7/20	32.3	-0.1	34.3/8	22.9	1.1	19.5/22	16
Rampur	27.6540	84.3508	189	76.1	128.1	5	1	1	1	55.5/4	33.3	1.3	35/3	21.7	1.9	17.5/23	16
Rara	29.5401	82.0818	2989	14.5	-	2	1	0	0	11.5/22	20.3	-	22.5/1	5.6	-	2/23	0



**Government of Nepal**  
**Ministry of Energy, Water Resource and Irrigation**  
**Department of Hydrology and Meteorology**  
**Climate Division (Climate Analysis Section)**  
**Babarmahal, Kathmandu**

Station	Latitude	Longitude	Elevation	Precipitation							Temperature						
				Total (mm)	% of Normal	No. of Rainy Days				24hr Highest precipitation (mm)/Date	Maximum			Minimum			No. of days with maximum temp. > 30°C
						≥1.0mm	≥10.0mm	≥25.0mm	≥50.0mm		Average (°C)	Departure from normal (°C)	Highest temperature / Date	Average (°C)	Departure from normal (°C)	Lowest temperature / Date	
Salleri	27.5051	86.5862	2383	30.5	52.3	2	2	0	0	17/3	22.2	-	24.5/1	9.7	-	7/21	0
Salyan Bazar	28.3821	82.1423	1557	0.0	0.1	0	0	0	0	0.01/6	27.9	1.0	29.9/2	15.6	1.0	13.2/19	0
Semari	27.4682	83.7861	110	4.0	5.9	1	0	0	0	4/21	33.6	1.7	35/3	23.0	4.0	20/23	16
Simara Airport	27.1642	84.9800	137	44.0	64.7	2	1	1	0	38.4/20	32.4	0.5	33.3/7	22.1	2.0	19.5/22	16
Simikot	29.9715	81.8161	2993	0.01	-	0	0	0	0	0.01/22	20	-	22/1	5.6	-	2.5/23	0
Sindhuli Madhi	27.2281	85.905	556	194.01	222	11	6	3	0	42.2/20	31	0.7	32/1	20	1.3	16/22	12
Siraha	26.6561	86.2117	63	0.8	1.303	0	0	0	0	0.8/3	33	-	35/9	22	-	19.5/22	16
Surkhet Airport	28.5879	81.6352	683	0.11	0.356	0	0	0	0	0.1/5	32	2.6	33.7/2	18	2.5	15.2/23	16
Syangja	28.0988	83.8722	871	63.43	73.16	7	3	0	0	19.1/4	31	2.5	33.6/2	19	2.6	14.6/21	13
Tamghas	28.0636	83.2435	1547	26.71	63.44	1	1	1	0	26.7/6	24	0.5	26/1	15	1.4	11.8/21	0
Tansen	27.8637	83.5387	1183	0	0	0	0	0	0	NR	29	-	33/11	18	2.4	14.2/21	5
Taplejung	27.3586	87.67	1744	46.11	63.25	7	1	0	0	13.3/5	24	1.5	27.1/2	15	2.2	12/21	0
Tarahara	26.6987	87.2786	120	206.92	248.7	5	4	4	2	74.2/2	33	1.6	35.5/1	23	2.3	19.5/21	16
Taulihawa	27.5711	83.0672	106	60.11	213.9	1	1	1	1	59.3/6	33	-	34.1/2	22	-	20.4/23	16
Terhathum	27.123	87.5362	1525	21.61	81.55	2	1	0	0	18/5	25	-0.8	28/1	16	2	12.5/21	0
Thakmarpha	28.7409	83.6816	2655	0.0	0.0	0	0	0	0	NR	20.0	1.9	22/1	5.2	0.5	1.2/21	0
Tikapur	28.5366	81.1150	149	0.0	0.1	0	0	0	0	0.01/1	34.0	2.3	35.5/3	17.1	-1.7	12/29	16
Udayapur Gadhi	26.9130	86.5397	469	86.0	126.3	7	4	0	0	24.5/2	29.2	-0.8	31/1	19.9	-0.9	0/19	5

*Note:*

- “mm” = millimeter; “temp” = temperature; “-” = Data Not Available; “NR” = No Precipitation.
- This summary is prepared based on the precipitation and temperature received at 112 meteorological stations during October, 2024. Out of 112 stations, 90 stations have normal precipitation data, 61 stations have normal maximum and 62 stations have normal minimum temperature data. Normal precipitation/temperature is the average of the monthly precipitation/temperature for the period of 1991-2020.
- Less than 90% of normal precipitation is considered as below normal, 90 to 110% is considered as near normal, and more than 110% of normal precipitation is considered as above normal precipitation for the month.