

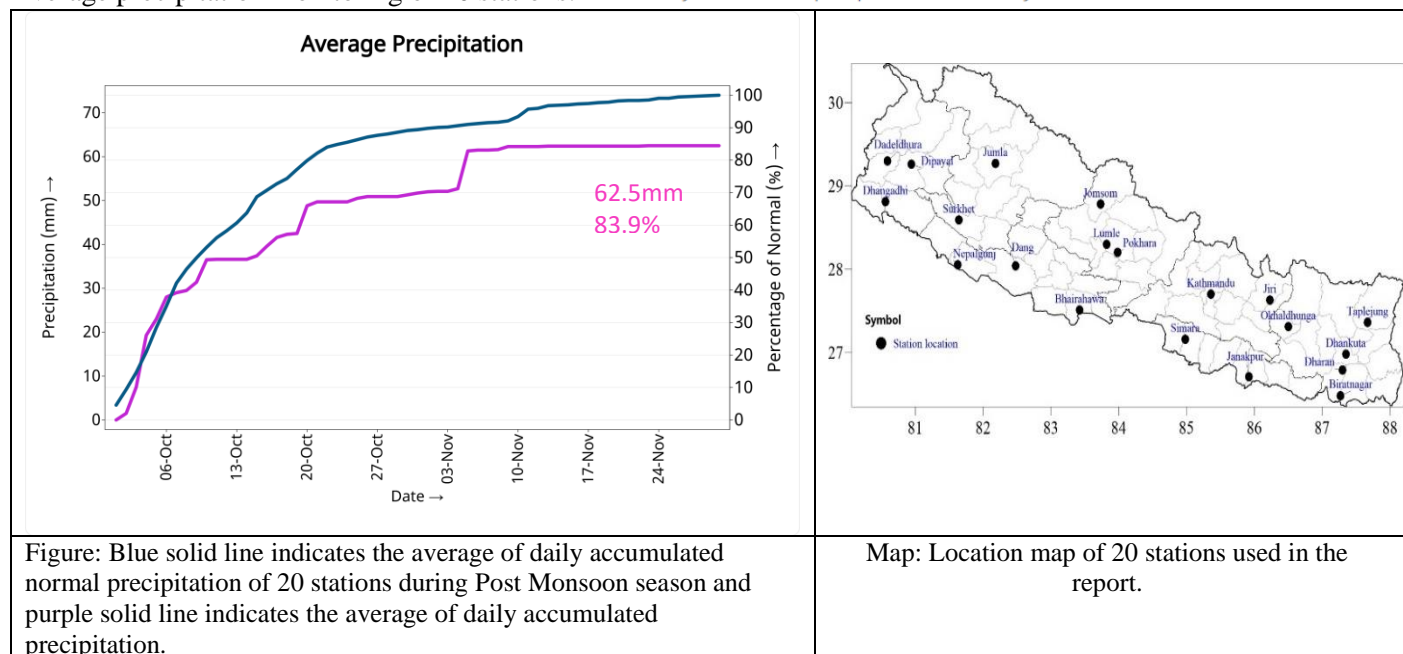


Government of Nepal
Ministry of Energy, Water Resource and Irrigation
Department of Hydrology and Meteorology
Climate Division (Climate Analysis Section)
Babarmahal, Kathmandu

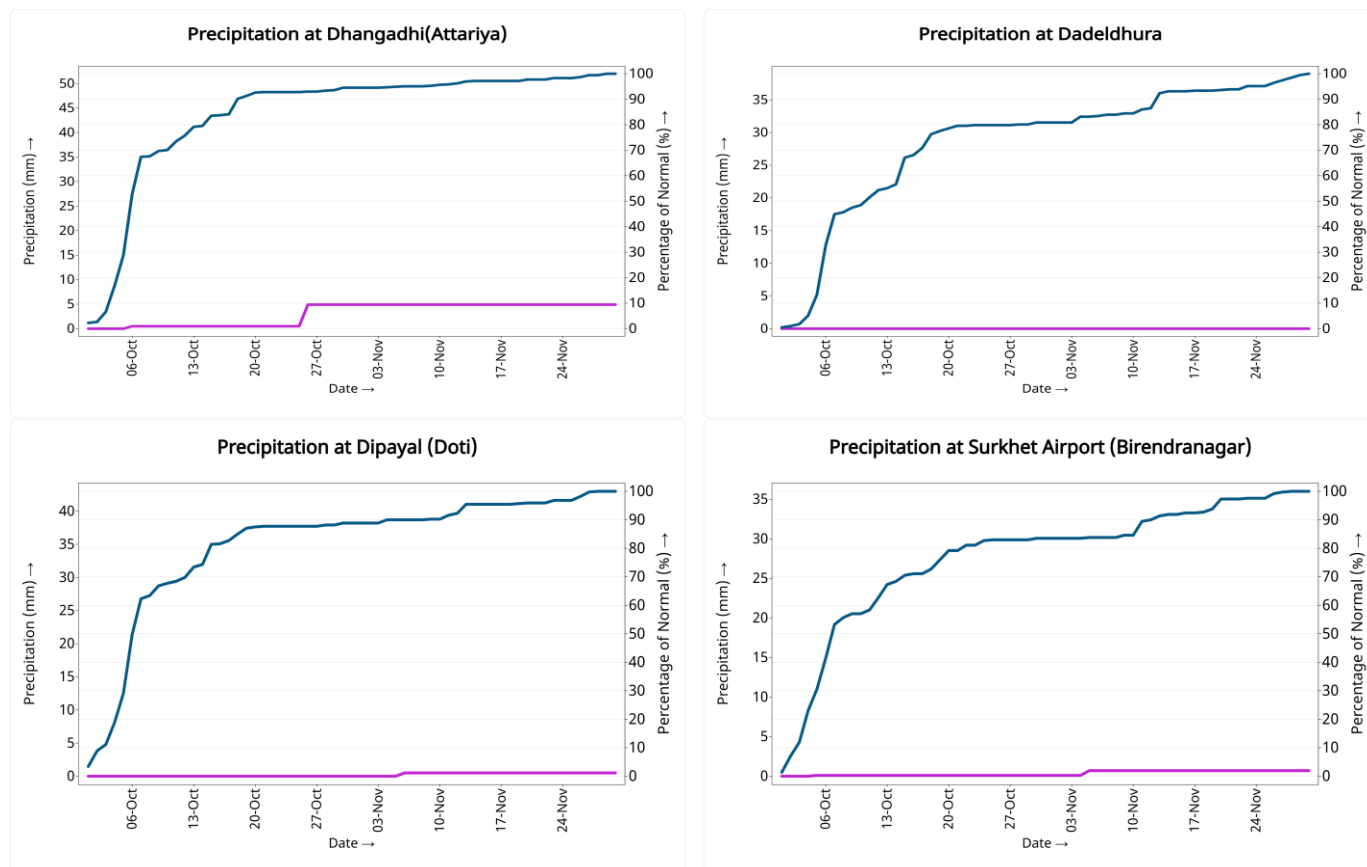
30th November 2024

Post Monsoon (October –November, 2024) Precipitation Monitoring

Average precipitation monitoring of 20 stations: — Daily accumulated precipitation — Daily accumulated normal *mm → millimeter



Precipitation Monitoring of individual stations:





Government of Nepal
Ministry of Energy, Water Resource and Irrigation
Department of Hydrology and Meteorology
Climate Division (Climate Analysis Section)
Babarmahal, Kathmandu

— Daily accumulated precipitation — Daily accumulated normal *mm → millimeter

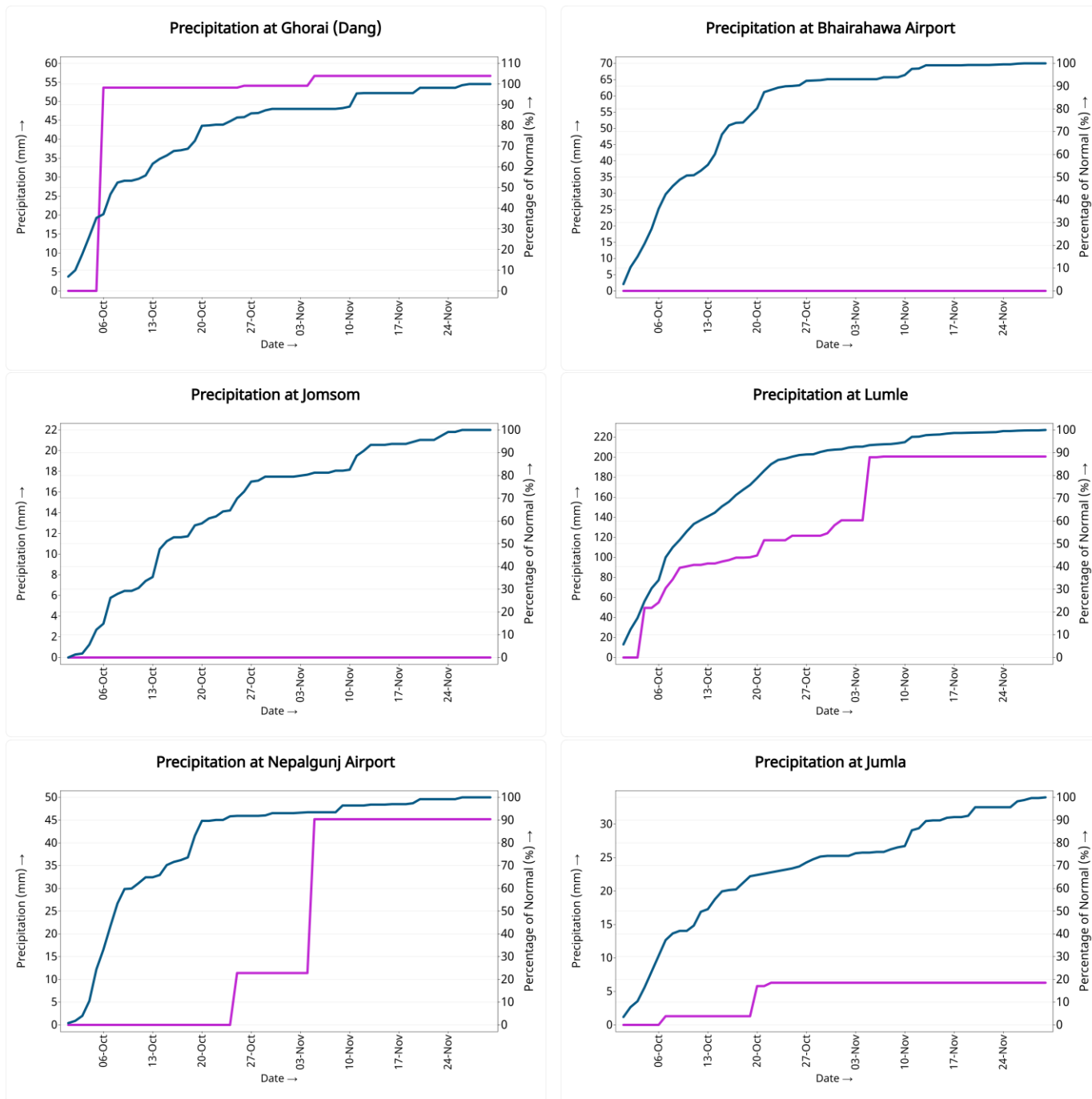


Figure: The blue lines in the above graphs indicate daily accumulated normal precipitation during Post Monsoon season. Normal rainfall is the average of precipitation over 30 years period from 1991 -2020 and purple lines in above graphs indicate the daily accumulated precipitation of this Post Monsoon season



Government of Nepal
Ministry of Energy, Water Resource and Irrigation
Department of Hydrology and Meteorology
Climate Division (Climate Analysis Section)
Babarmahal, Kathmandu

— Daily accumulated precipitation — Daily accumulated normal *mm → millimeter

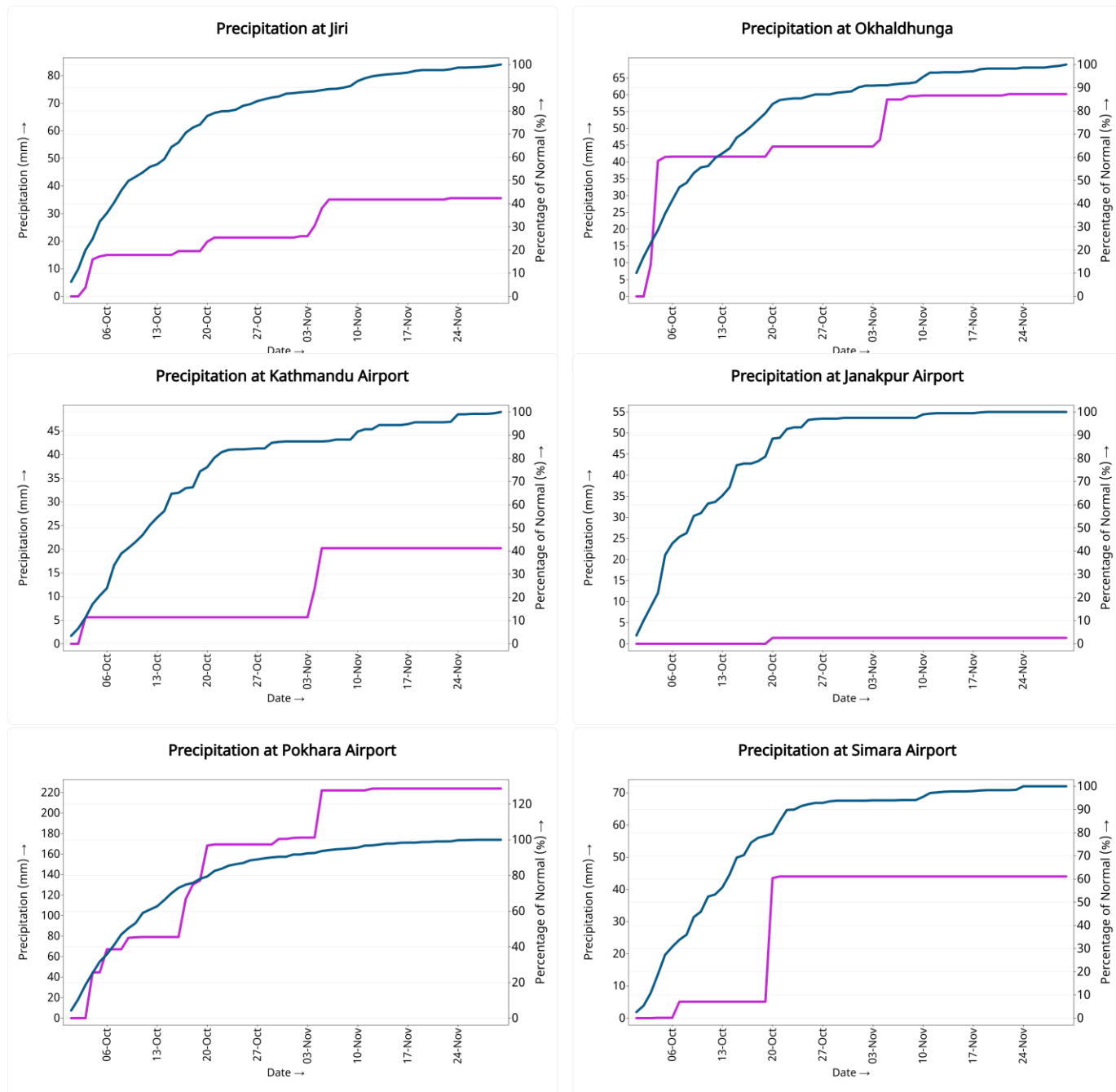


Figure: The blue lines in the above graphs indicate daily accumulated normal precipitation during Post Monsoon season. Normal rainfall is the average of precipitation over 30 years period from 1991 -2020 and purple lines in above graphs indicate the daily accumulated precipitation of this Post Monsoon season



Government of Nepal
Ministry of Energy, Water Resource and Irrigation
Department of Hydrology and Meteorology
Climate Division (Climate Analysis Section)
Babarmahal, Kathmandu

— Daily accumulated precipitation — Daily accumulated normal *mm → millimeter

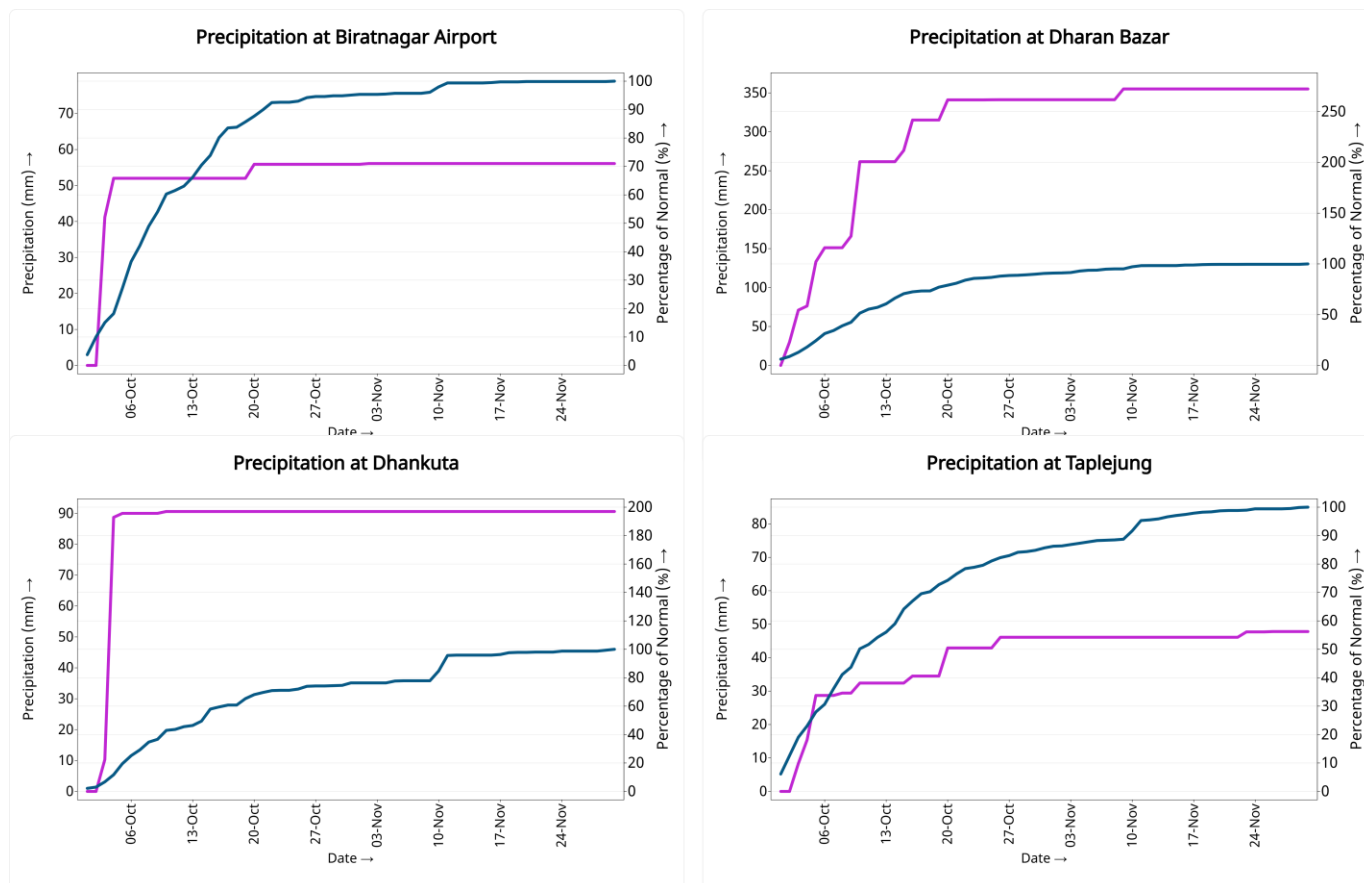


Figure: The blue lines in the above graphs indicate daily accumulated normal precipitation during Post Monsoon season. Normal rainfall is the average of precipitation over 30 years period from 1991 -2020 and purple lines in above graphs indicate the daily accumulated precipitation of this Post Monsoon season