

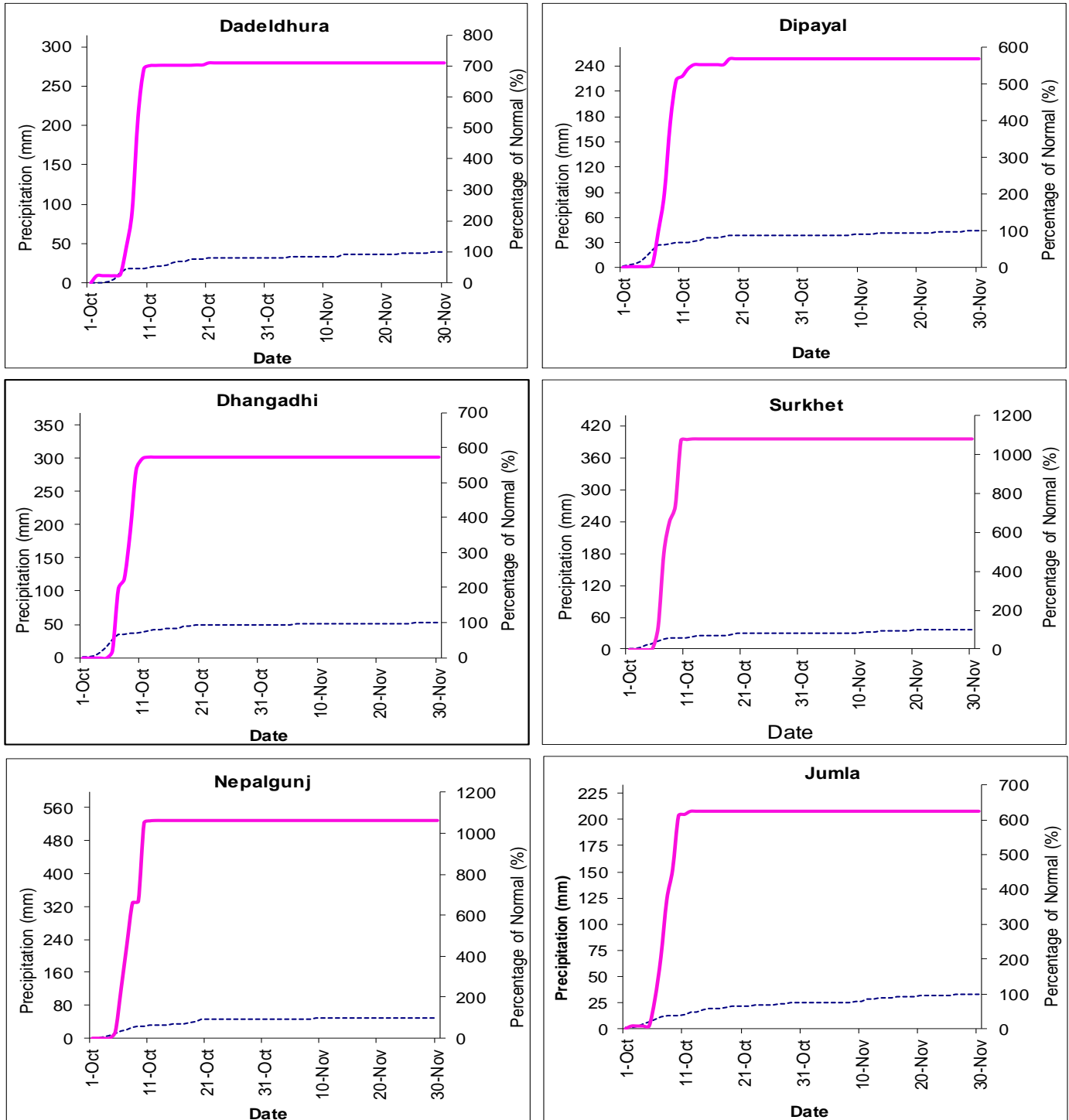


Government of Nepal
Ministry of Energy, Water Resource and Irrigation
Department of Hydrology and Meteorology
Climate Division (Climate Analysis Section)
Babarmahal, Kathmandu

30th November 2022

Post-Monsoon (October-November, 2022) Precipitation Monitoring

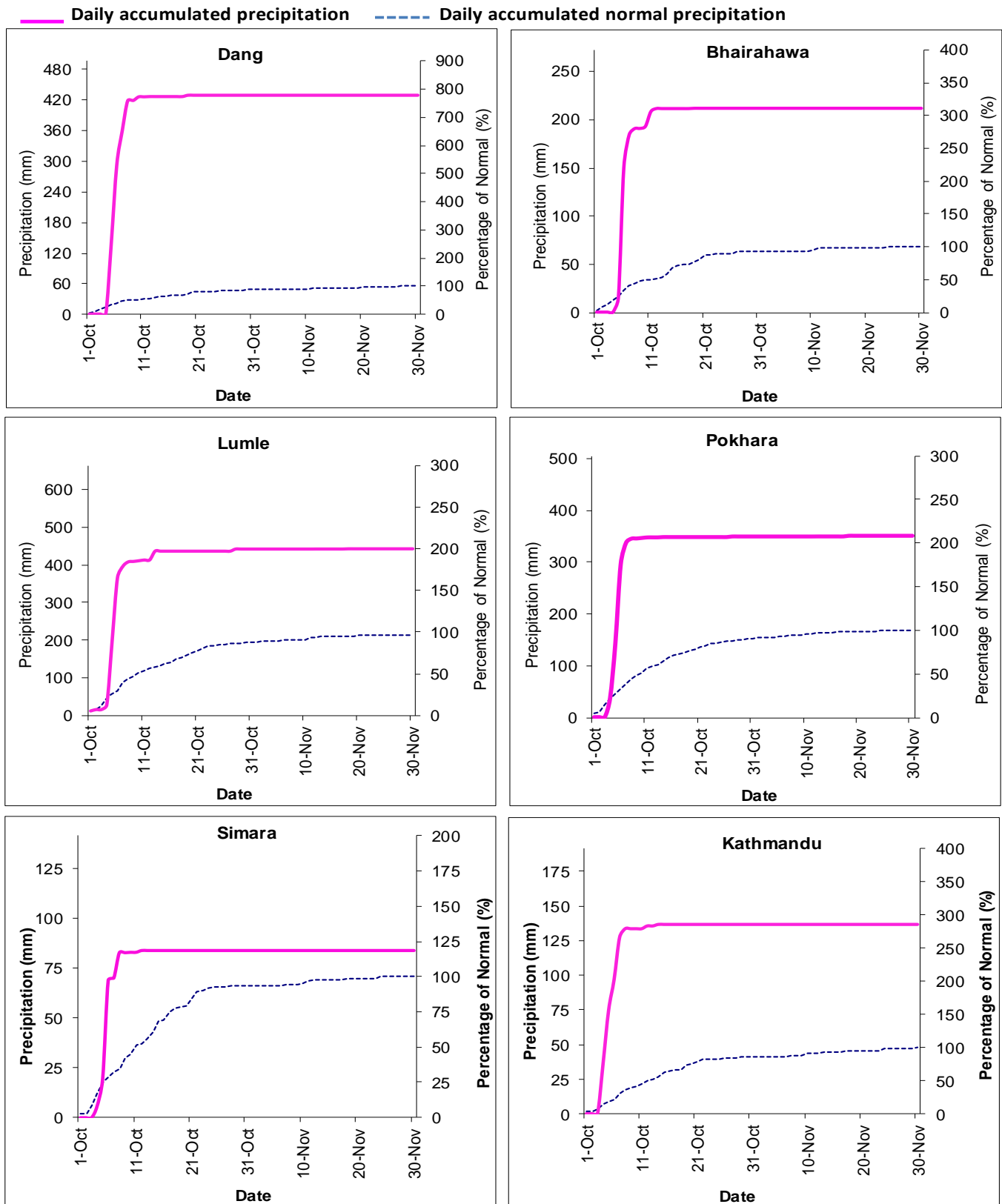
— Daily accumulated precipitation - - - - - Daily accumulated normal precipitation



Note: The blue dotted lines (-----) in the above graphs indicate daily accumulated normal precipitation during Post-Monsoon Season. Normal rainfall is the average of precipitation over 30 years period from 1991 -2020 and pink lines (—) in above graphs indicate the daily accumulated precipitation of this Post-Monsoon Season.



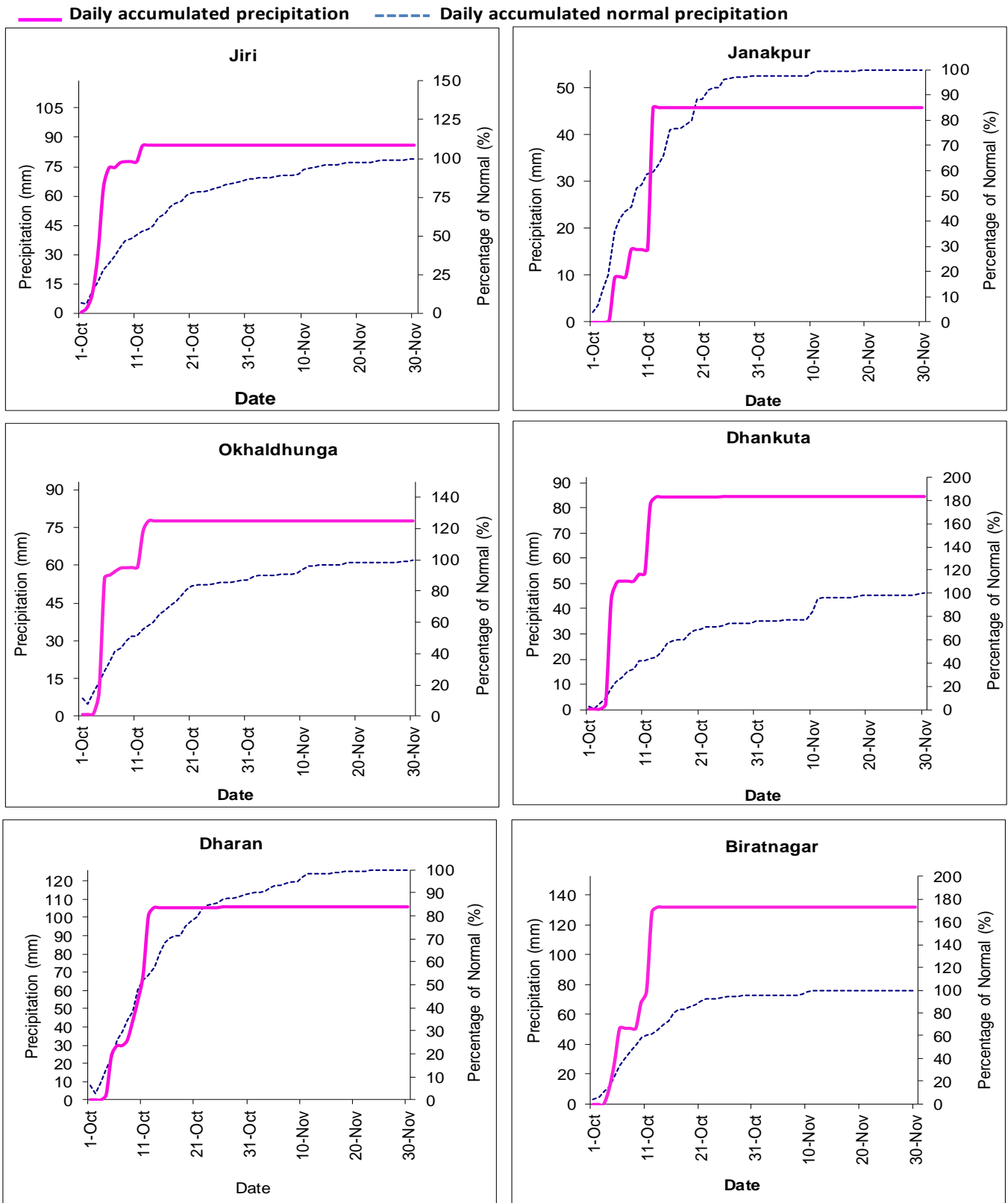
Government of Nepal
Ministry of Energy, Water Resource and Irrigation
Department of Hydrology and Meteorology
Climate Division (Climate Analysis Section)
Babarmahal, Kathmandu



Note: The blue dotted lines (-----) in the above graphs indicate daily accumulated normal precipitation during Post-Monsoon Season. Normal rainfall is the average of precipitation over 30 years period from 1991 -2020 and pink lines (—) in above graphs indicate the daily accumulated precipitation of this Post-Monsoon Season.



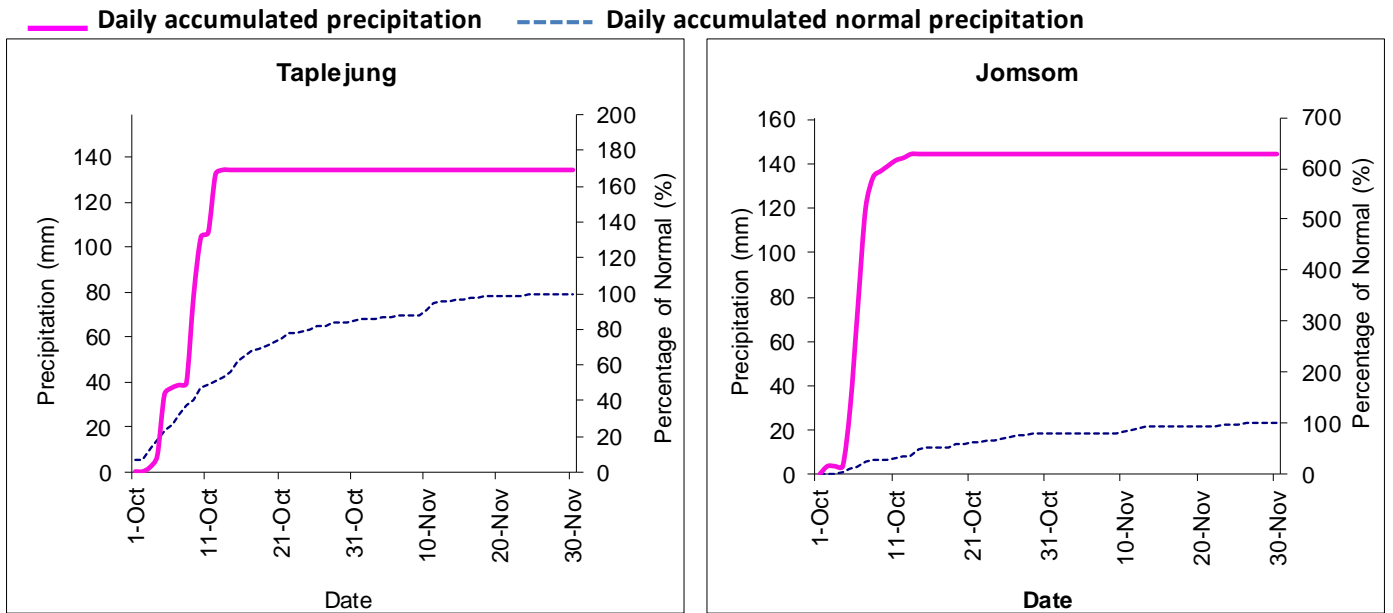
Government of Nepal
Ministry of Energy, Water Resource and Irrigation
Department of Hydrology and Meteorology
Climate Division (Climate Analysis Section)
 Babarmahal, Kathmandu



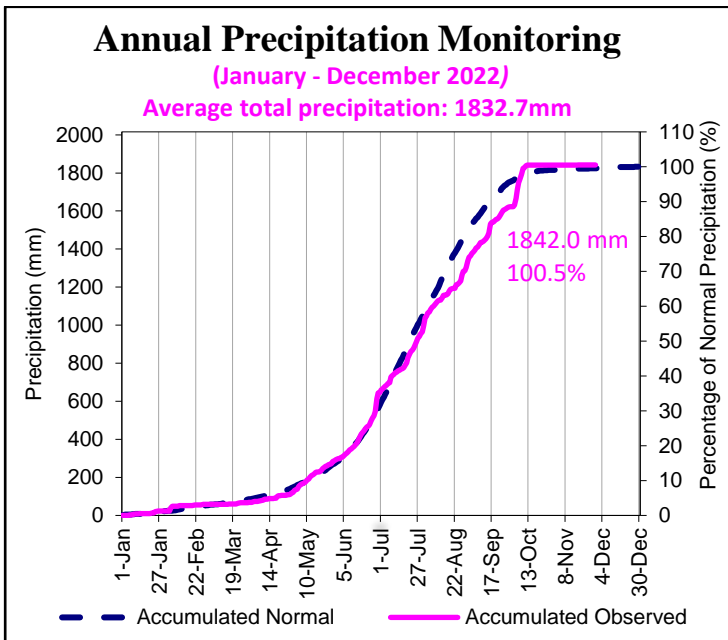
Note: The blue dotted lines (-----) in the above graphs indicate daily accumulated normal precipitation during Post-Monsoon Season. Normal rainfall is the average of precipitation over 30 years period from 1991 -2020 and pink lines (—) in above graphs indicate the daily accumulated precipitation of this Post-Monsoon Season.



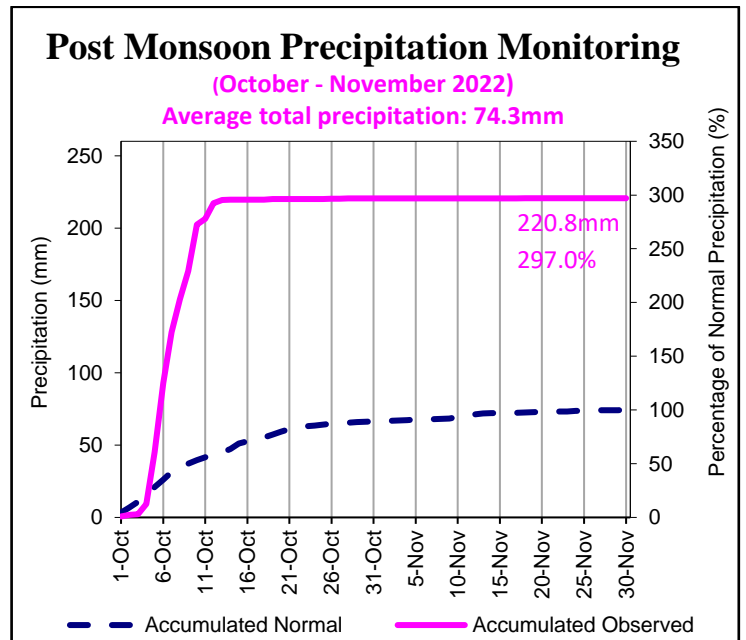
Government of Nepal
Ministry of Energy, Water Resource and Irrigation
Department of Hydrology and Meteorology
Climate Division (Climate Analysis Section)
 Babarmahal, Kathmandu



Note: The blue dotted lines (-----) in the above graphs indicate daily accumulated normal precipitation during Post-Monsoon Season. Normal rainfall is the average of precipitation over 30 years period from 1991 -2020 and pink lines (—) in above graphs indicate the daily accumulated precipitation of this Post-Monsoon Season.



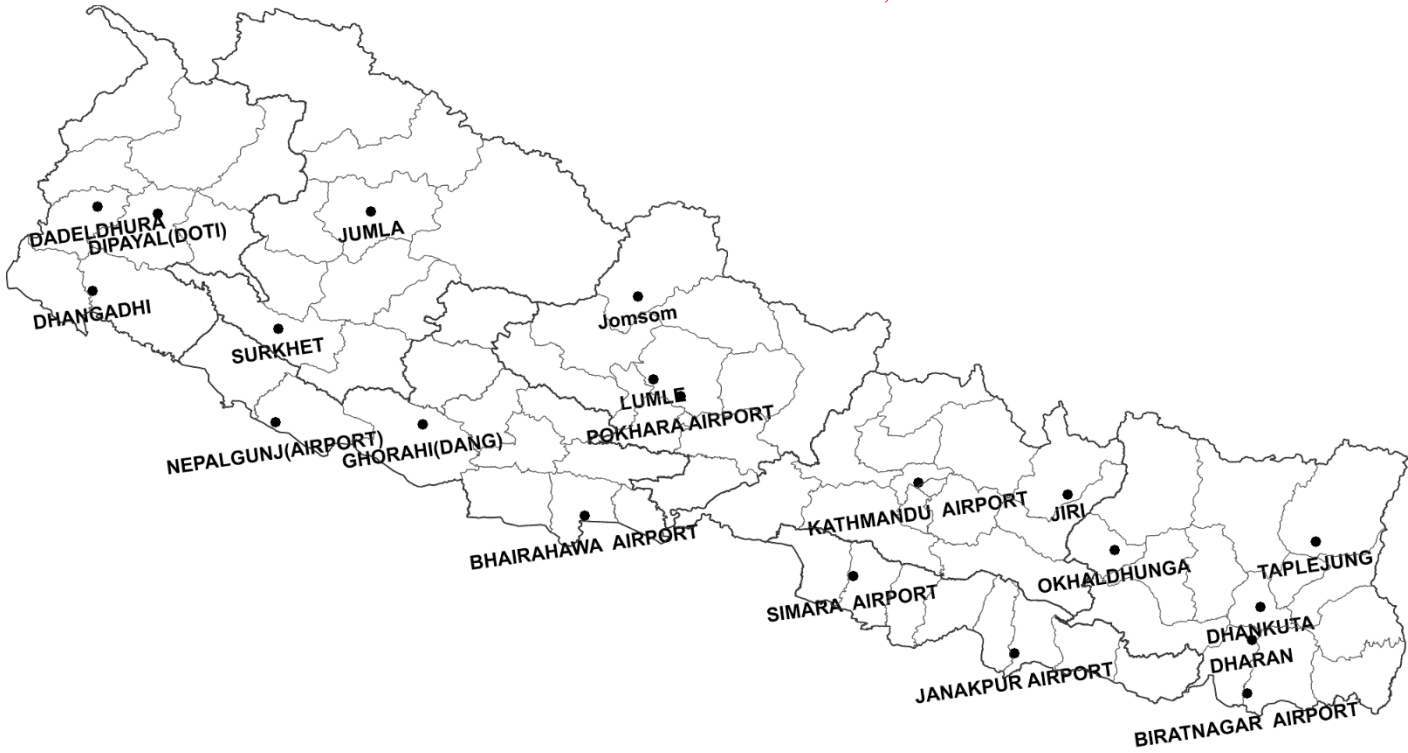
In the above graph, blue dashed (----) line indicates the average of daily accumulated normal precipitation of 20 stations throughout the year (Jan - Dec) and pink solid line (—) indicates the average of daily accumulated precipitation of this year. The 20 stations are shown in the map below.



In the above graph, blue dashed (----) line indicates the average of daily accumulated normal precipitation of 20 stations during Post-Monsoon Season (October-November 2022) and pink solid line (—) indicates the average of daily accumulated precipitation of this Post-Monsoon Season. The 20 stations are shown in the map below.



Government of Nepal
Ministry of Energy, Water Resource and Irrigation
Department of Hydrology and Meteorology
Climate Division (Climate Analysis Section)
Babarmahal, Kathmandu



Map: Location map of 20 stations used in the above graphs