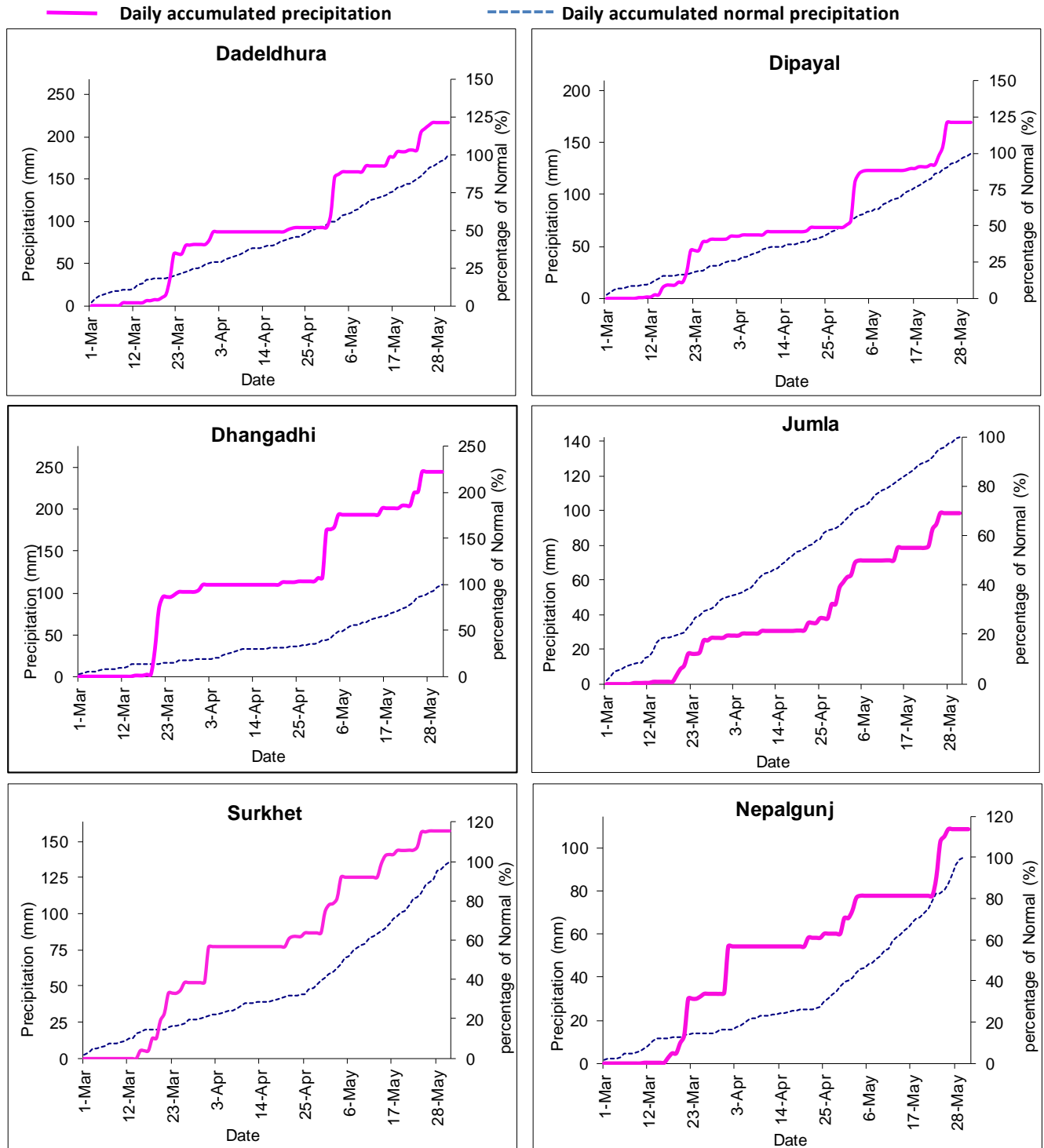




Government of Nepal
Ministry of Energy, Water Resource and Irrigation
Department of Hydrology and Meteorology
Climate Division (Climate Analysis Section)
Babarmahal, Kathmandu

31st May 2023

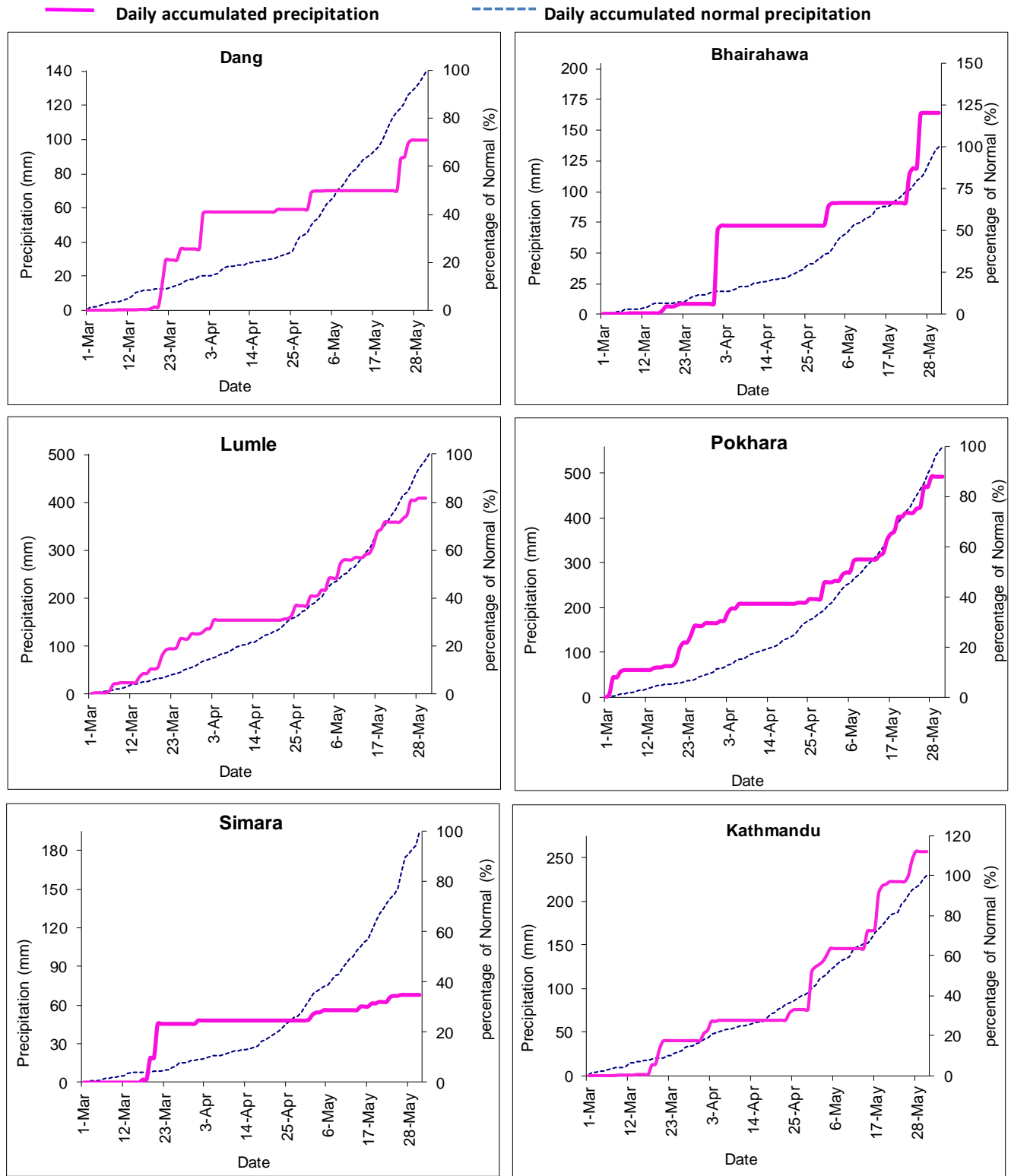
Pre-Monsoon (March - May 2023) Precipitation Monitoring



Note: The blue dotted lines (-----) in the above graphs indicate daily accumulated normal precipitation during Pre-monsoon season. Normal rainfall is the average of precipitation over 30 years period from 1991 -2020 and pink lines (—) in above graphs indicate the daily accumulated precipitation of this Pre-monsoon season.



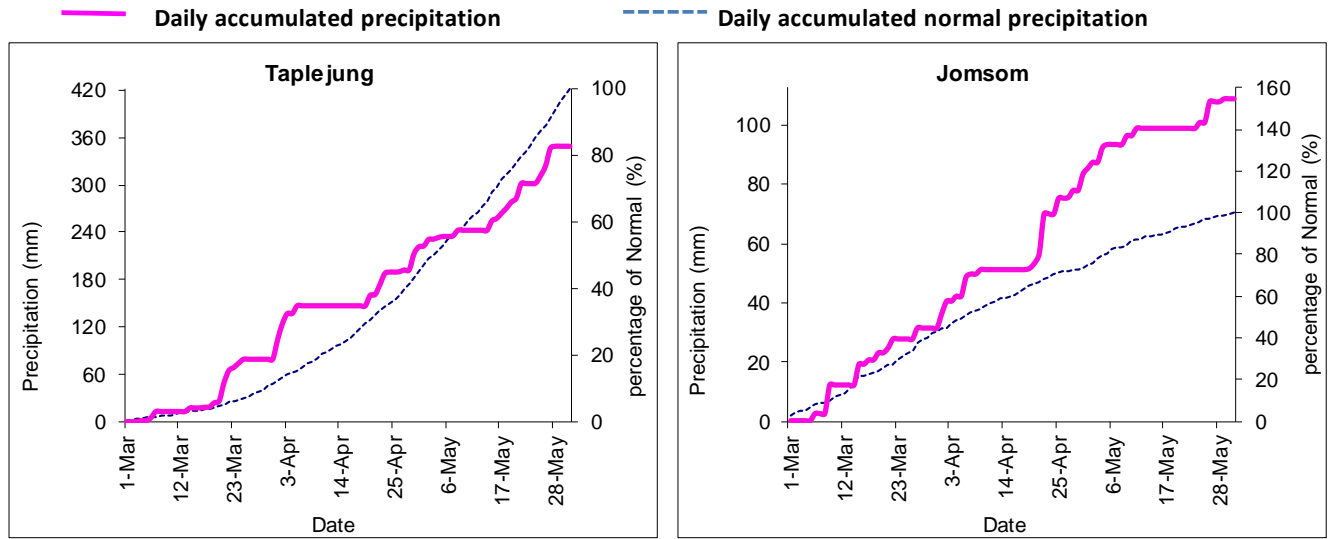
Government of Nepal
Ministry of Energy, Water Resource and Irrigation
Department of Hydrology and Meteorology
Climate Division (Climate Analysis Section)
Babarmahal, Kathmandu



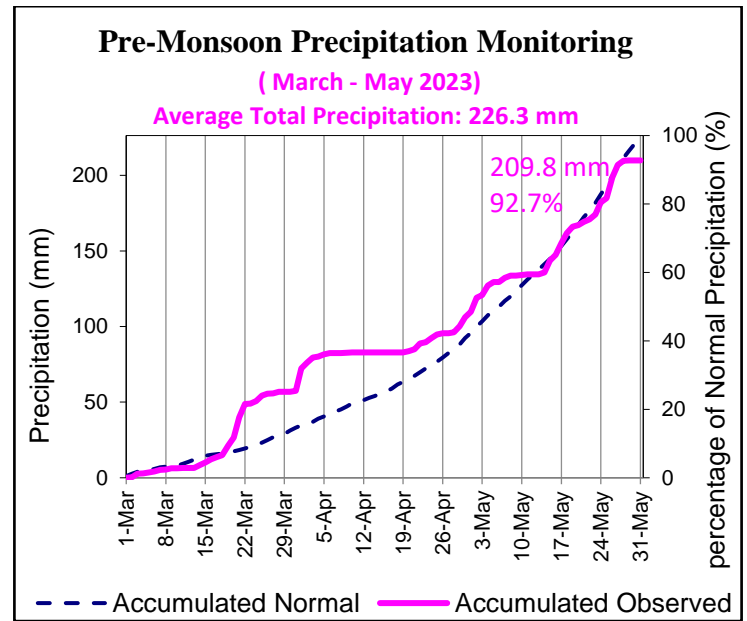
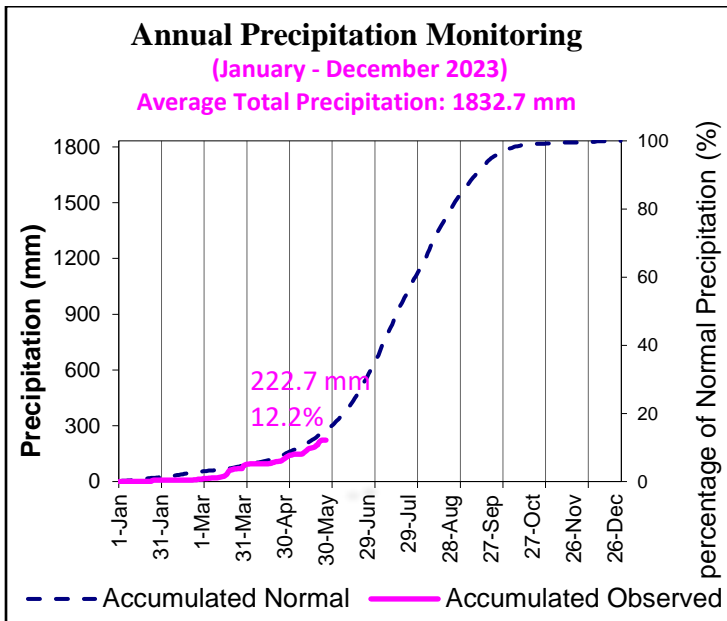
Note: The blue dotted lines (-----) in the above graphs indicate daily accumulated normal precipitation during Pre-monsoon season. Normal rainfall is the average of precipitation over 30 years period from 1991 -2020 and pink lines (—) in above graphs indicate the daily accumulated precipitation of this Pre-monsoon season.



Government of Nepal
Ministry of Energy, Water Resource and Irrigation
Department of Hydrology and Meteorology
Climate Division (Climate Analysis Section)
 Babarmahal, Kathmandu



Note: The blue dotted lines (-----) in the above graphs indicate daily accumulated normal precipitation during Pre-monsoon season. Normal rainfall is the average of precipitation over 30 years period from 1991 -2020 and pink lines (—) in above graphs indicate the daily accumulated precipitation of this Pre-monsoon season.

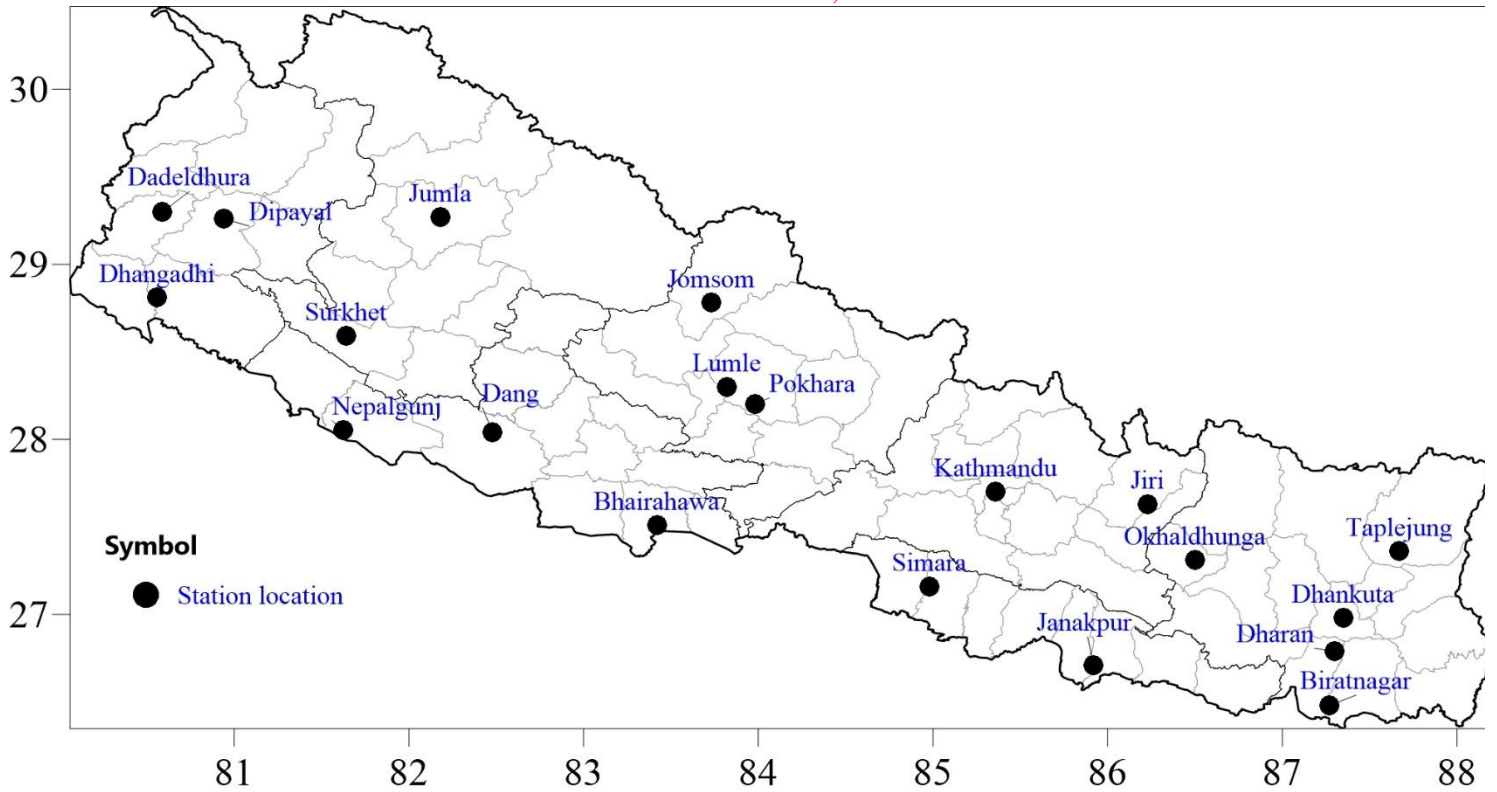


In the above graph, blue dashed (-----) line indicates the average of daily accumulated normal precipitation of 20 stations throughout the year (Jan - Dec) and pink solid line (—) indicates the average of daily accumulated precipitation of this year. The 20 stations are shown in the map below.

In the above graph, blue dashed (-----) line indicates the average of daily accumulated normal precipitation of 20 stations during Pre-monsoon season (March - May 2023) and pink solid line (—) indicates the average of daily accumulated precipitation of this Pre-monsoon Season.



Government of Nepal
Ministry of Energy, Water Resource and Irrigation
Department of Hydrology and Meteorology
Climate Division (Climate Analysis Section)
Babarmahal, Kathmandu



Map: Location map of 20 stations used in the above graphs