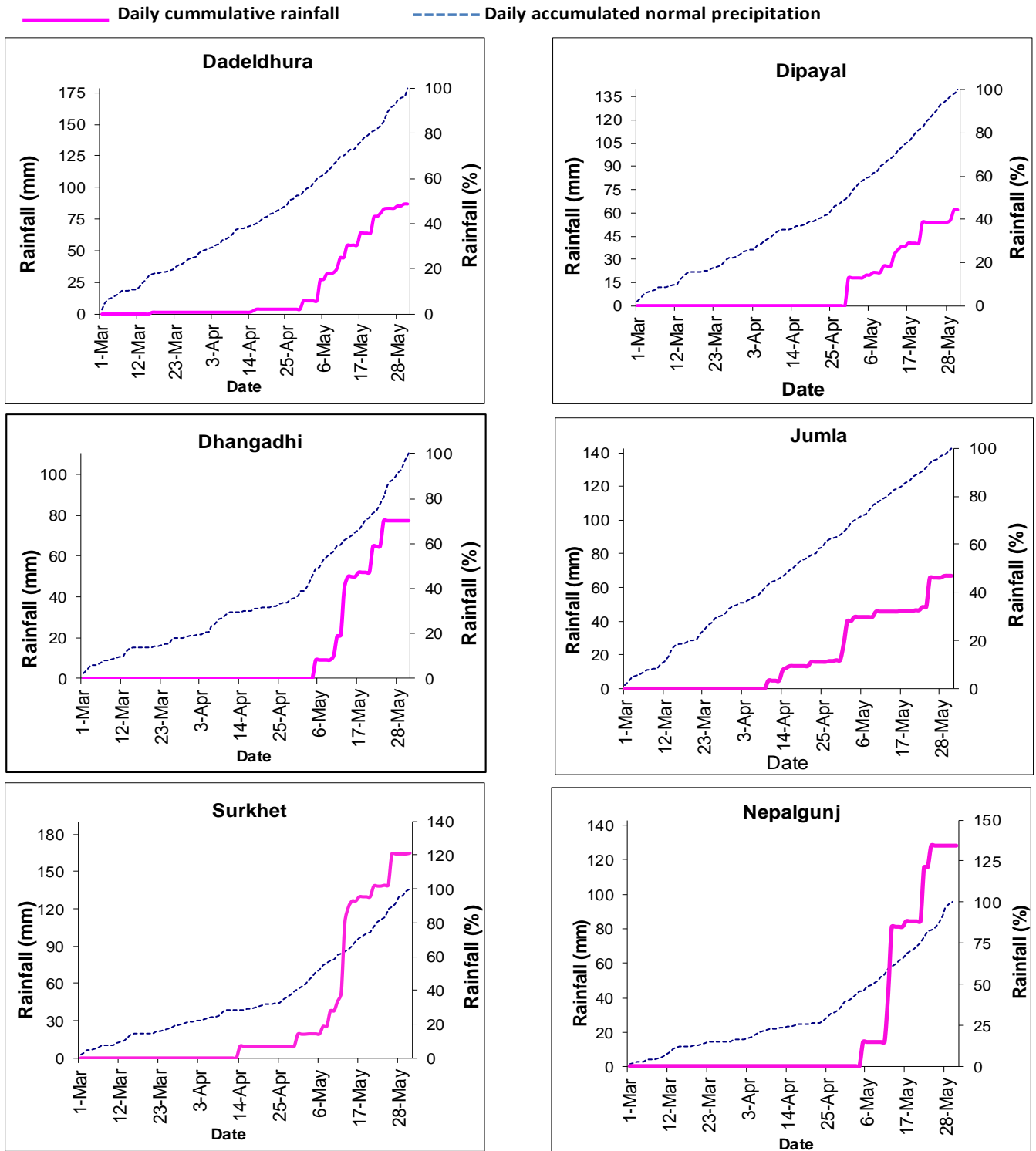




Government of Nepal
Ministry of Energy, Water Resource and Irrigation
Department of Hydrology and Meteorology
Climate Division (Climate Analysis Section)
Babarmahal, Kathmandu

31st May 2022

Pre- monsoon (March-May2022) Precipitation Monitoring



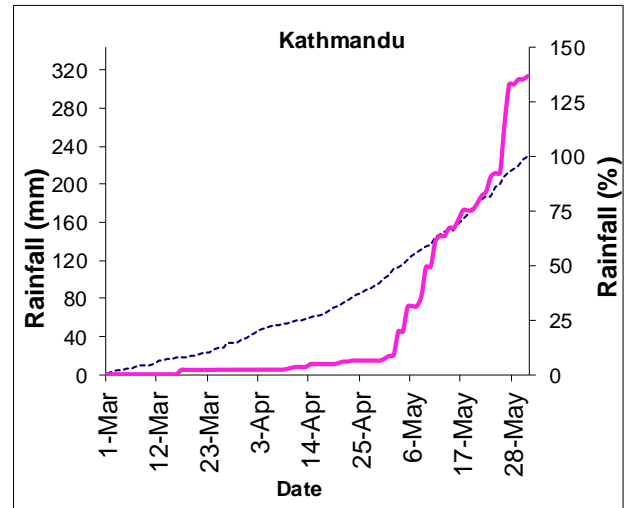
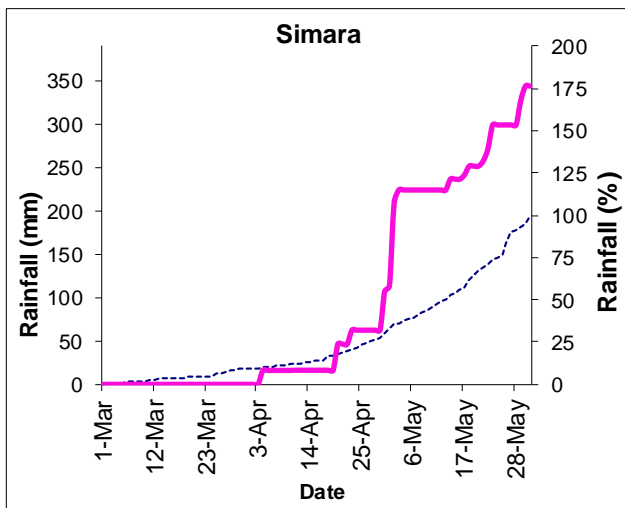
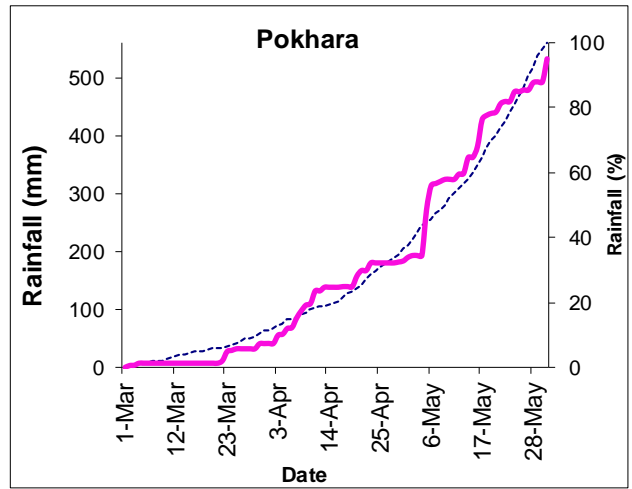
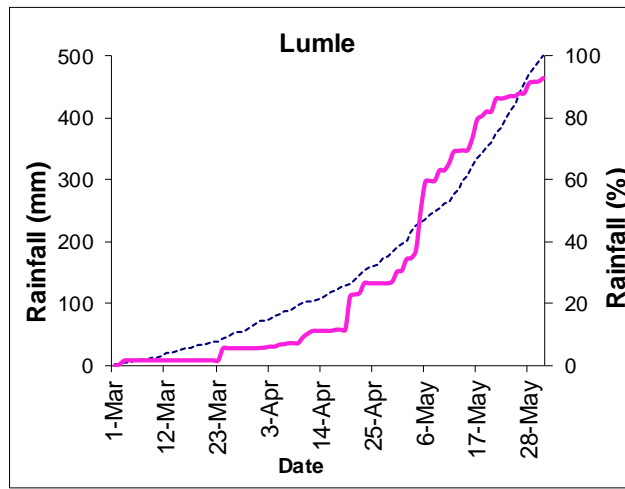
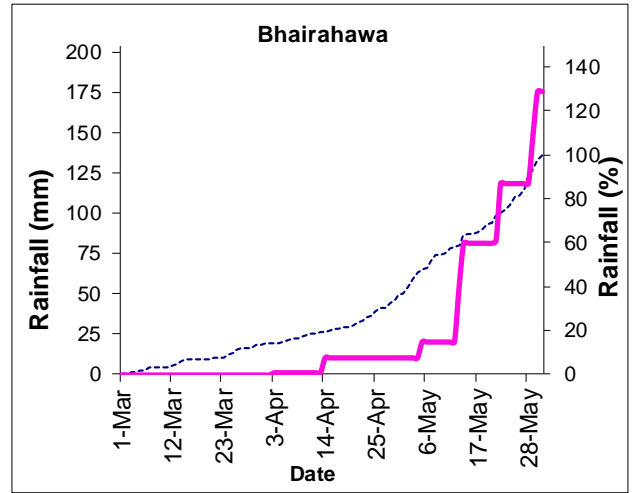
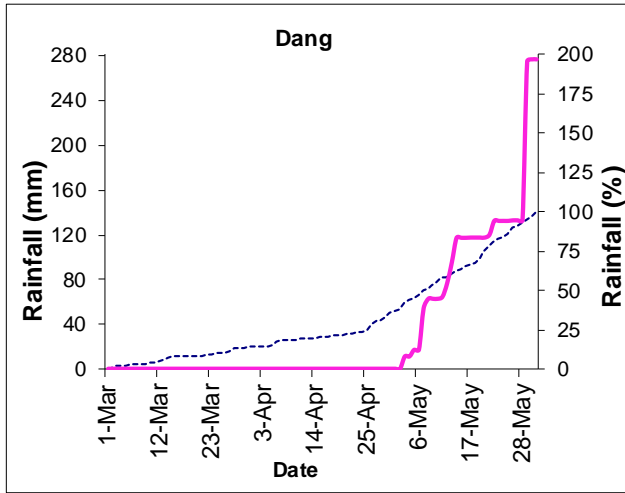
Note: The blue dotted lines (-----) in the above graphs indicate daily accumulated normal precipitation during Pre-Monsoon Season. Normal rainfall is the average of precipitation over 30 years period from 1991 -2020 and pink lines (—) in above graphs indicate the daily accumulated precipitation of this Pre-Monsoon Season.



Government of Nepal
Ministry of Energy, Water Resource and Irrigation
Department of Hydrology and Meteorology
Climate Division (Climate Analysis Section)
Babarmahal, Kathmandu

— Daily cummulative rainfall

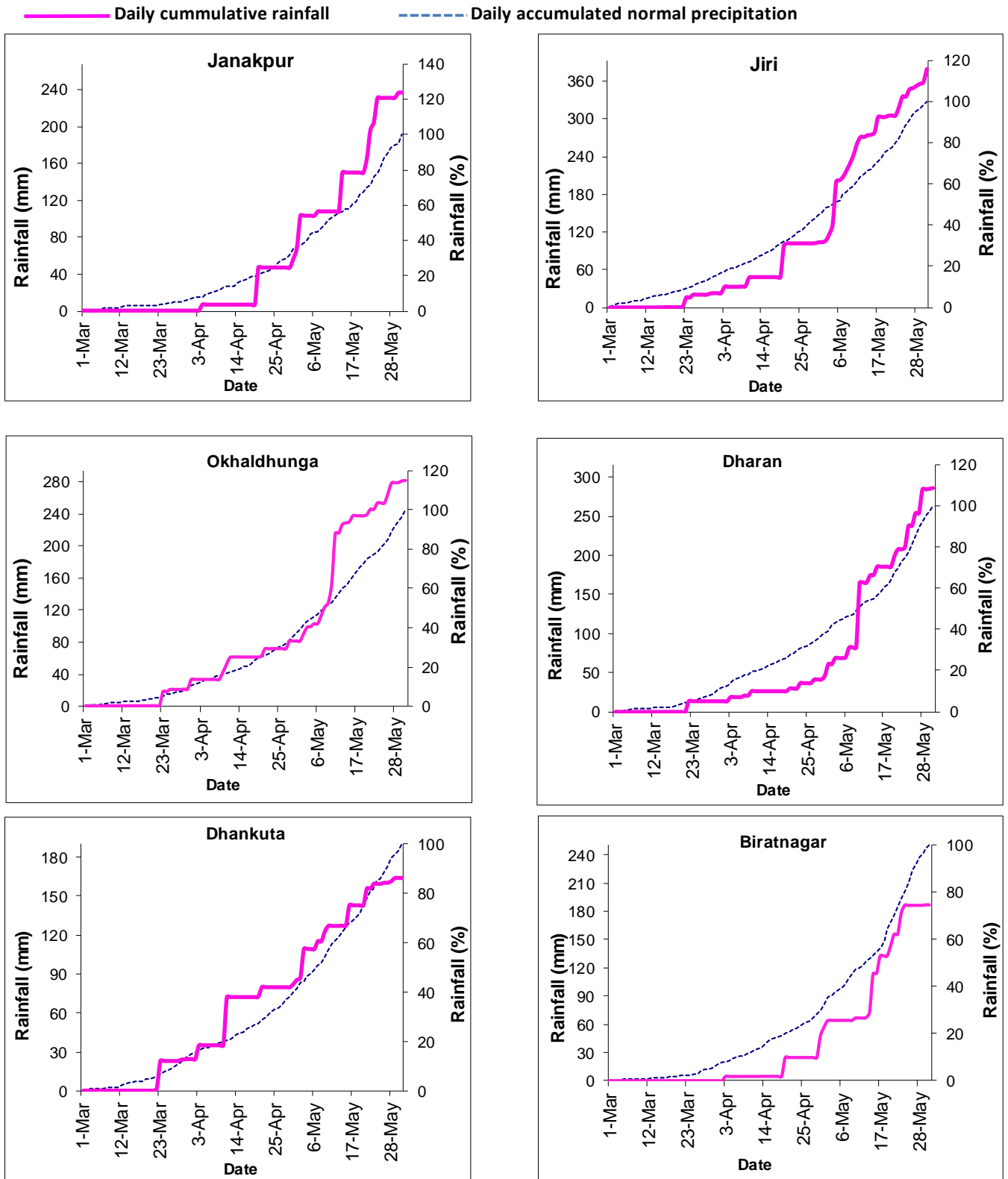
----- Daily accumulated normal precipitation



Note: The blue dotted lines (-----) in the above graphs indicate daily accumulated normal precipitation during Pre-Monsoon Season. Normal rainfall is the average of precipitation over 30 years period from 1991 -2020 and pink lines (—) in above graphs indicate the daily accumulated precipitation of this Pre-Monsoon Season.



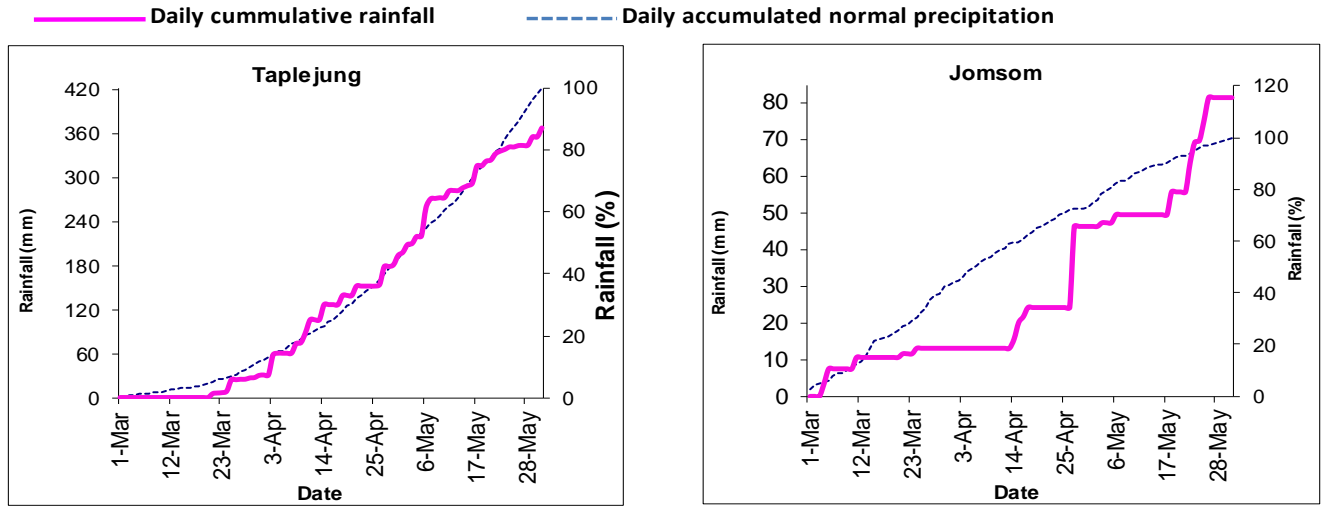
Government of Nepal
Ministry of Energy, Water Resource and Irrigation
Department of Hydrology and Meteorology
Climate Division (Climate Analysis Section)
Babarmahal, Kathmandu



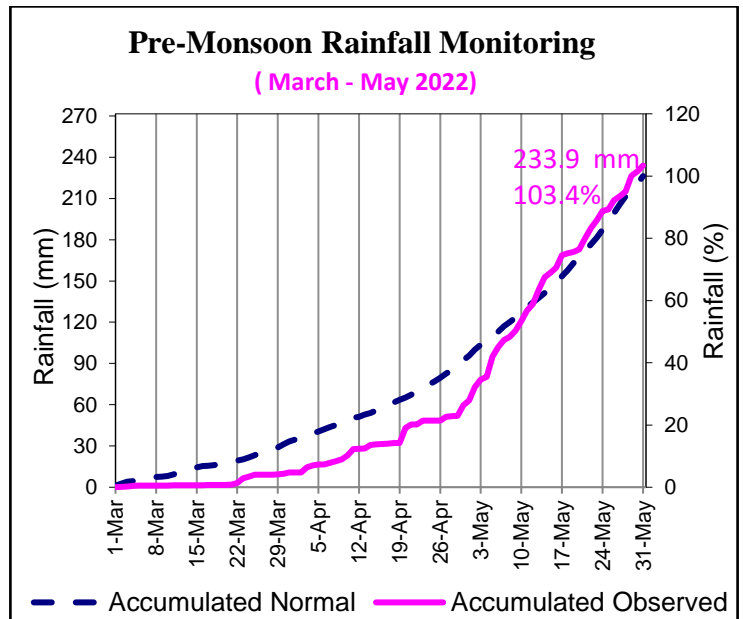
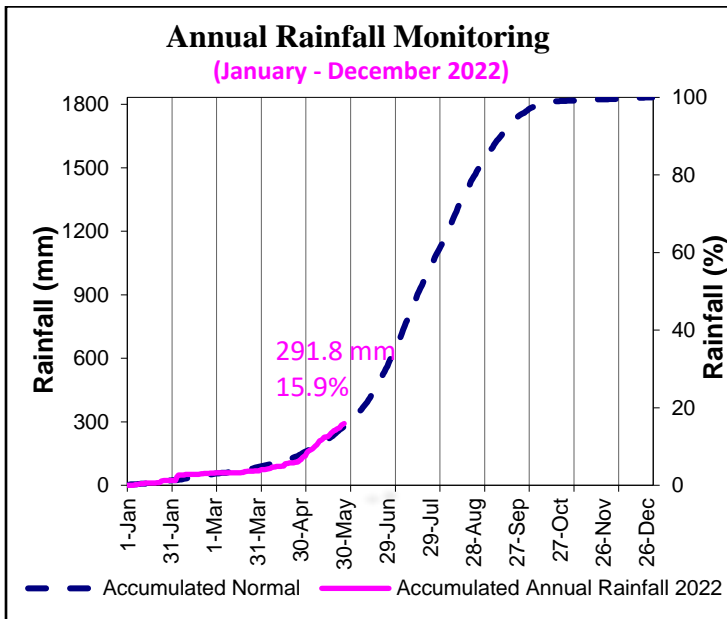
Note: The blue dotted lines (-----) in the above graphs indicate daily accumulated normal precipitation during Pre-Monsoon Season. Normal rainfall is the average of precipitation over 30 years period from 1991 -2020 and pink lines (—) in above graphs indicate the daily accumulated precipitation of this Pre-Monsoon Season.



Government of Nepal
Ministry of Energy, Water Resource and Irrigation
Department of Hydrology and Meteorology
Climate Division (Climate Analysis Section)
 Babarmahal, Kathmandu



Note: The blue dotted lines (-----) in the above graphs indicate daily accumulated normal precipitation during Pre-Monsoon Season. Normal rainfall is the average of precipitation over 30 years period from 1991 -2020 and pink lines (—) in above graphs indicate the daily accumulated precipitation of this Pre-Monsoon Season.

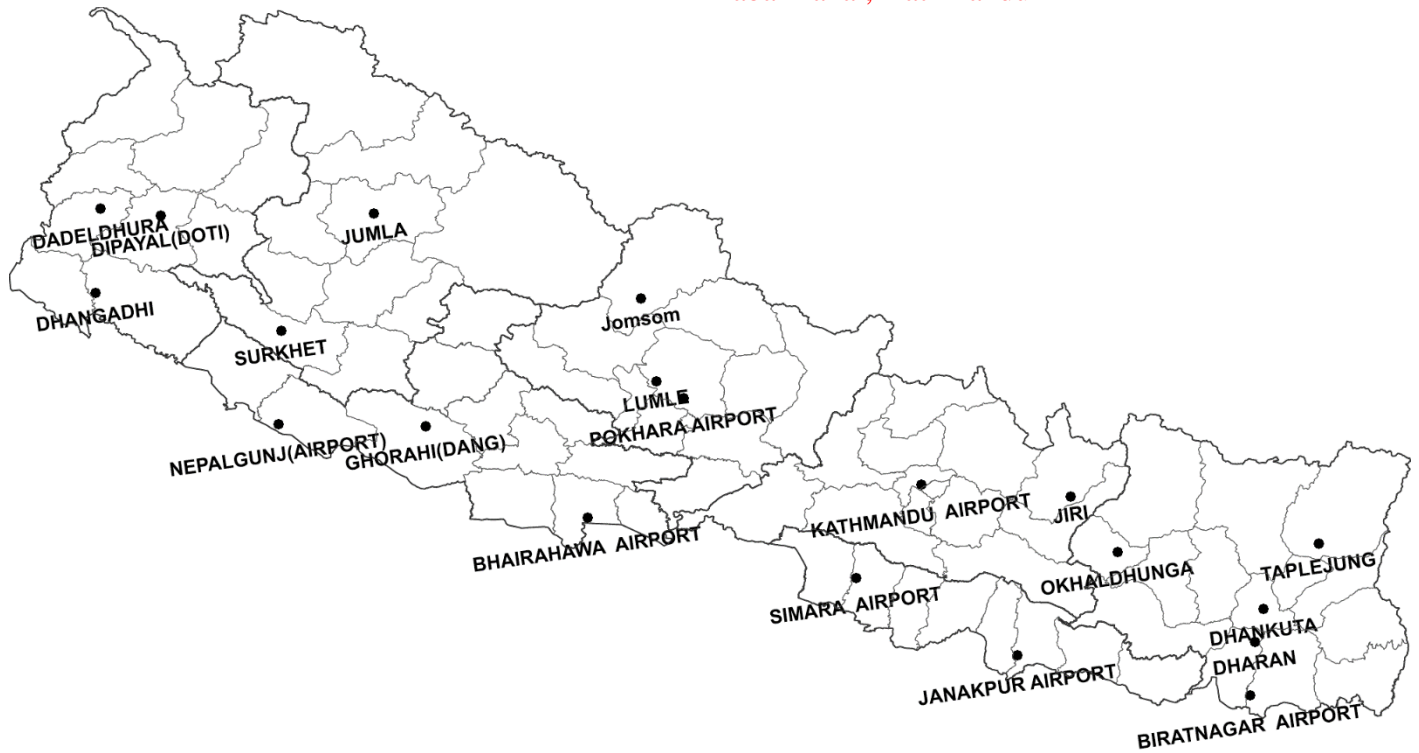


In the above graph, blue dashed (-----) line indicates the average of daily accumulated normal precipitation of 20 stations throughout the year (Jan - Dec) and pink solid line (—) indicates the average of daily accumulated precipitation of this year. The 20 stations are shown in the map below.

In the above graph, blue dashed (-----) line indicates the average of daily accumulated normal precipitation of 20 stations during Pre-Monsoon Season (March-May 2022) and pink solid line (—) indicates the average of daily accumulated precipitation of this Pre-Monsoon Season. The 20 stations are shown in the map below.



Government of Nepal
Ministry of Energy, Water Resource and Irrigation
Department of Hydrology and Meteorology
Climate Division (Climate Analysis Section)
Babarmahal, Kathmandu



Map: Location map of 20 stations used in the above graphs