



15<sup>th</sup> August 2023

## Preliminary Precipitation and Temperature Summary July, 2023

### Highlights

Nepal experienced isolated to scattered rain/thundershowers, with fairly widespread heavy rain/thundershowers in some parts of the country during first, second and third week of July and light to moderate rain/thundershowers with intermittent heavy rain in some places during fourth week of July. Maximum and minimum temperature were warmer than normal during July.

### Synoptic Sequences

The monsoon trough was south of its normal position during most week except in 2<sup>nd</sup> week of July when eastern part of monsoon trough was north of its normal position.

### Precipitation

Large part of Madhesh Province, Bagamati Province, Lumbini Province and Karnali Province, eastern and central part of Koshi Province and some isolated parts of Gandaki Province and Sudurpaschim Province recorded below normal precipitation during July. However, remaining parts of the country including large part of Gandaki Province and Sudurpaschim Province recorded near-normal to above normal precipitation (Figure 1).

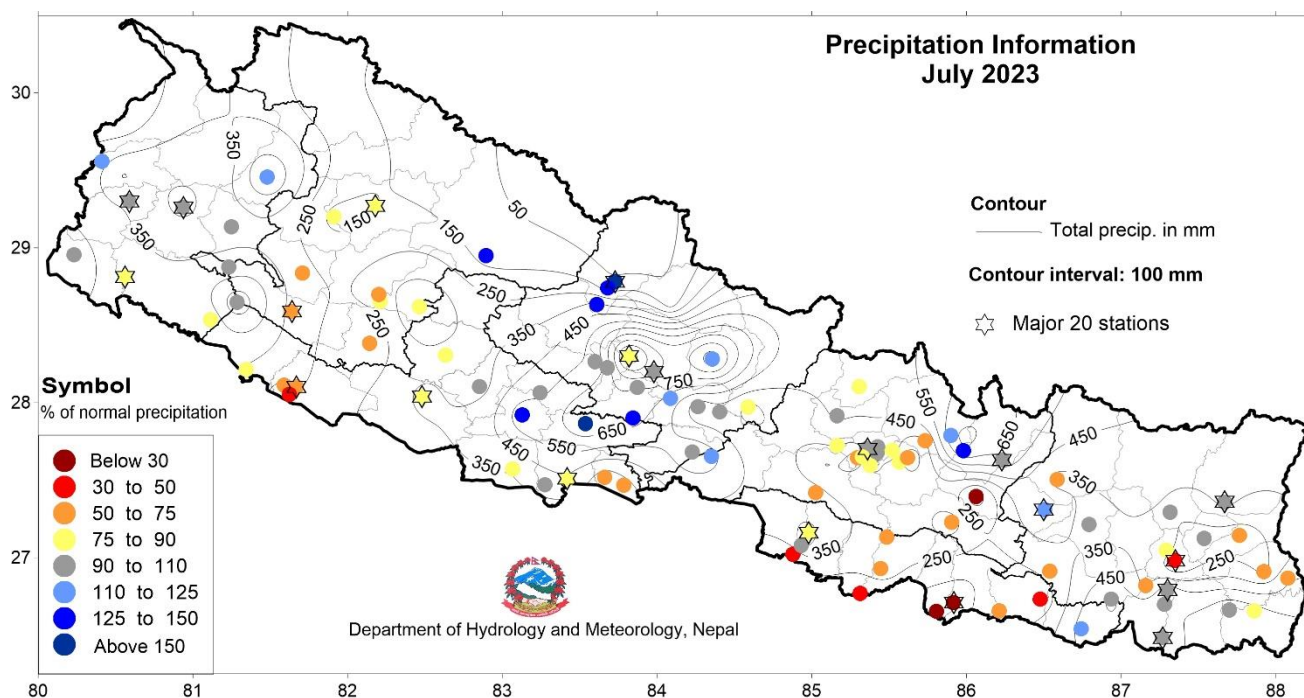


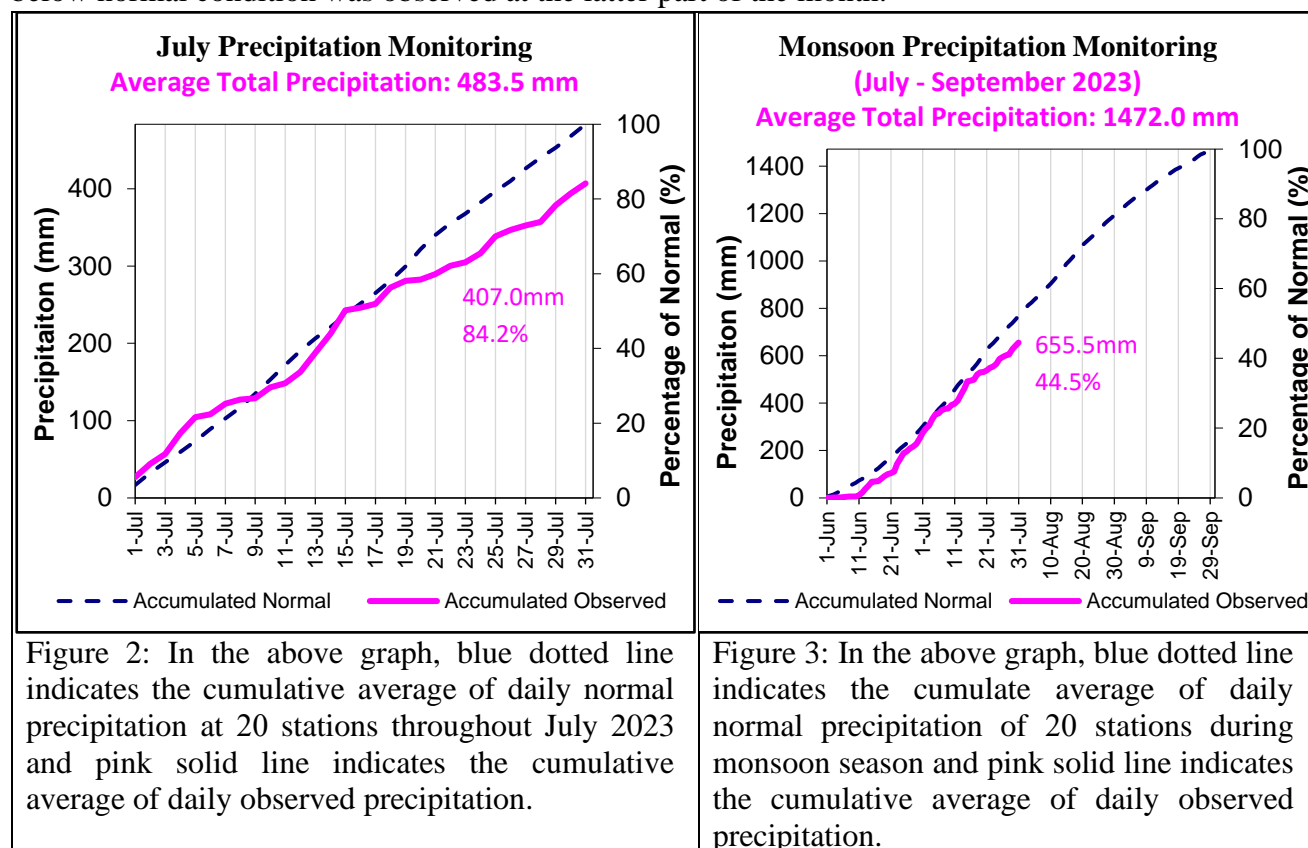
Figure 1: Precipitation in July 2023. Contour lines indicate the total precipitation in mm and coloured circles indicate the percentage of monthly normal precipitation at the meteorological stations.



Government of Nepal  
Ministry of Energy, Water Resource and Irrigation  
Department of Hydrology and Meteorology  
Climate Division (Climate Analysis Section)  
Babarmahal, Kathmandu

Rajbiraj station of Saptari district recorded the highest 24-hours precipitation of 185.2 mm on 5<sup>th</sup> July 2023. The highest monthly total precipitation of 1156.0 mm was recorded at Lumle station of Kaski district while the lowest monthly total precipitation of 65.6 mm was recorded at Jaleswor of Mahottari district. Similarly, the highest (159.9%) and the lowest (24.3%) percentage of monthly normal precipitation were recorded at Tansen station of Palpa district and Janakpur Airport station of Dhanusha district respectively (Annex 1). Based on the average of 99 stations shown in figure 1, Nepal received 86.3% of the normal precipitation of the month. However, based on the average of 20 major stations shown in figure 1, Nepal received 84.2% of monthly normal precipitation. In general, 90 to 110% of normal precipitation is considered as the near normal precipitation for the month.

Figures 2 and 3, respectively, show the temporal distribution of monthly and monsoon seasonal cumulative average of daily precipitation at 20 major stations located as shown in figure 1. The timeseries of precipitation shows that precipitation was near-normal until the third week of July and below normal condition was observed at the latter part of the month.



### Maximum Temperature

Most part of the country recorded above normal maximum temperature during July. However, some isolated part over the country recorded near-normal to above maximum temperature (Figure 4). Northern part of the country recorded less than 20°C while southern plain recorded above 30°C.



**Government of Nepal**  
**Ministry of Energy, Water Resource and Irrigation**  
**Department of Hydrology and Meteorology**  
**Climate Division (Climate Analysis Section)**  
Babarmahal, Kathmandu

Compared to other stations, Birganj station of Parsa district and Humde station of Manang district recorded the highest and lowest monthly maximum temperature of 35.5°C and 19.0°C respectively. Similarly, the highest monthly anomaly of 2.0°C was recorded at Dhulikhel station of Kavrepalanchok district and the lowest anomaly of -2.0°C was recorded at Semari station of Nawalparasi-West district (Annex 1). The highest daily maximum temperature of 39.5°C was recorded at Gulariya station of Bardiya district on 21<sup>st</sup> July while the lowest daily maximum temperature of 13.0°C was recorded at Humde of Manang district on 1<sup>st</sup> July. Some of the stations broke the July's highest record of maximum temperature in this July.

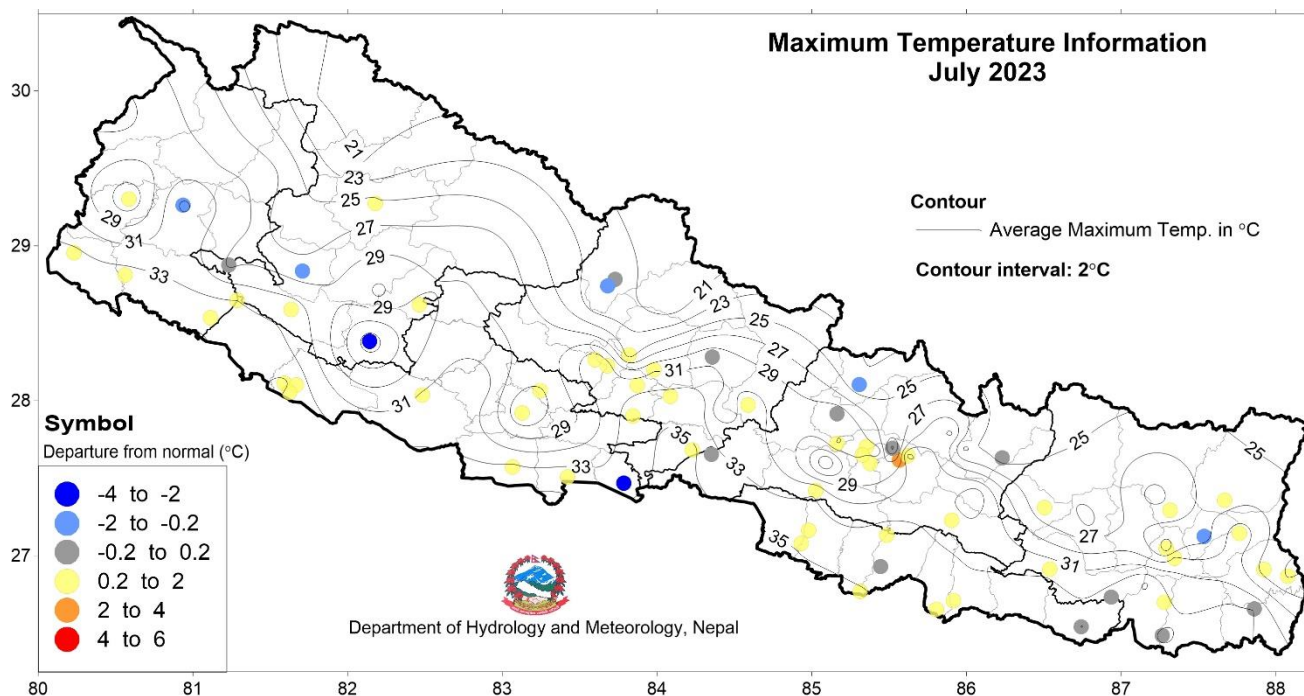


Figure 4: Maximum Temperature in July 2023. Contour lines indicate the average maximum temperature in Degree Celsius and coloured circles indicate the departure from normal maximum temperature at the meteorological stations.

### Minimum Temperature

Most parts of the country recorded above normal minimum temperature during July. However, some isolated parts over the country recorded near-normal to below normal minimum temperature (Figure 5). There was sharp decrease in the temperature from southern to northern parts of the country. Southern parts recorded monthly minimum temperature more than 25°C while northern parts recorded less than 15°C.

Compared to other stations, Janakpur Airport station of Dhanusha district and Humde station of Manang district recorded the highest and lowest monthly minimum temperature of 27.9°C and 11.0°C respectively. Similarly, the highest monthly anomaly of 2.1°C was recorded at Chainpur station of Sankhuwasava district and the lowest anomaly of -3.0°C was recorded at Jomsom station of Mustang district (Annex 1). The highest daily minimum temperature of 30.0°C was recorded at Semari station



**Government of Nepal**  
**Ministry of Energy, Water Resource and Irrigation**  
**Department of Hydrology and Meteorology**  
**Climate Division (Climate Analysis Section)**  
Babarmahal, Kathmandu

of Nawalparasi-West district on 21<sup>st</sup> July while the lowest daily minimum temperature of 6.0°C was recorded at Nagma station of Kalikot district on 1<sup>st</sup> July. Some of the stations broke the July's lowest record of minimum temperature in this July.

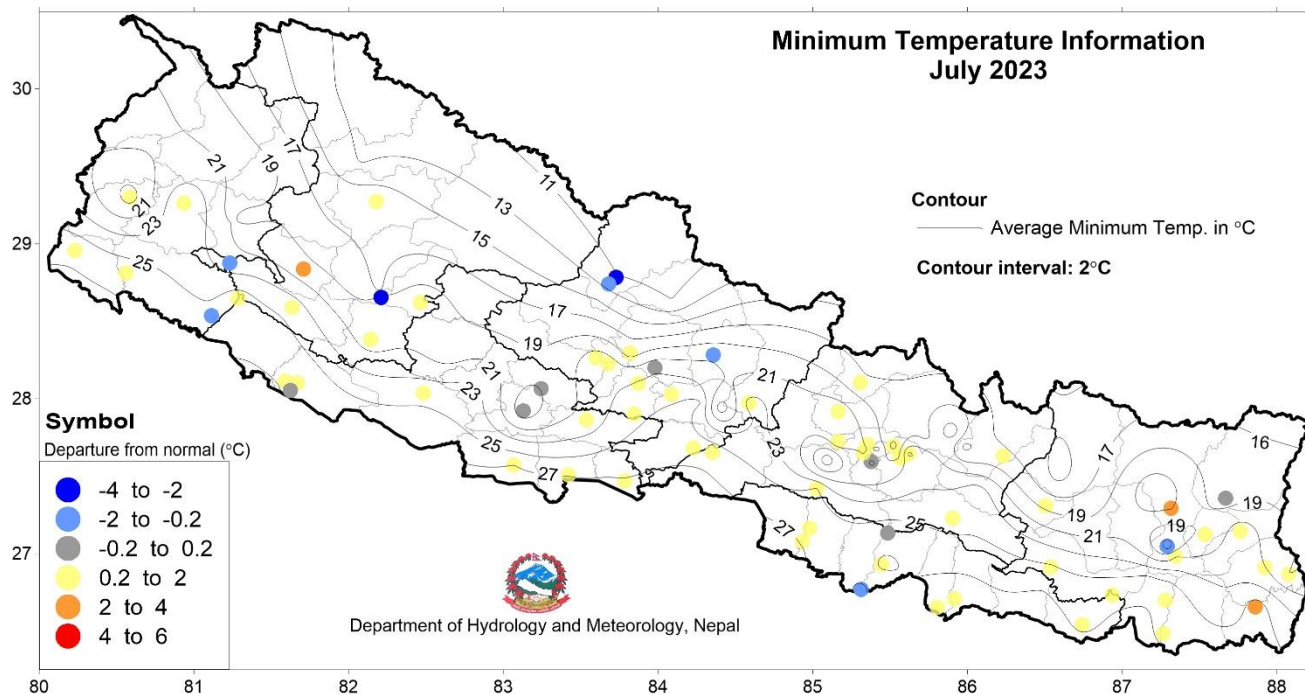


Figure 5: Minimum Temperature in July 2023. Contour lines indicate the average minimum temperature in Degree Celsius and coloured circles indicate the departure from normal minimum temperature at the meteorological stations.

## Extreme Weather

### 1. Drought

Moderate to severe drought condition has been observed over large part of Madhesh Province, eastern part of Koshi Province, southern part of Karnali Province and isolated part of Bagamati Province and Lumbini Province in July. Manthali, Jaleshore and Janakpur Airport stations recorded below normal precipitation by 70% indicating extreme drought over the region (Annex 1). Similarly, Nepaljung, Birganj, Lahan, Dhankuta and Gaur stations recorded below normal precipitation by 50% indicating severe drought condition in this July. However, wet condition has been observed over large part of Gandaki Province.

Drought has been categorized based on the observed precipitation compared to normal. A drought is defined as moderate, severe and extreme as given in the table below.

S.N.	Percentage of normal precipitation (%)	Drought category
1	50 - 75	Moderate drought
2	30 - 50	Severe drought
3	< 30	Extreme drought



**Government of Nepal**  
**Ministry of Energy, Water Resource and Irrigation**  
**Department of Hydrology and Meteorology**  
**Climate Division (Climate Analysis Section)**  
Babarmahal, Kathmandu

## 2. Historical record break

In this July, several stations broke the previous record of July's extremes of maximum and minimum temperature (Table 1 and 2).

Table 1: List of stations breaking the July's highest daily maximum temperature in July 2023.

S.N .	Station Name	District	Record break maximum temperature (°C)/Date	Previous highest maximum temperature (°C)/Date
1	Gorkha (Birenchowk)	Gorkha	35.5/2023-07-20	35.0/2006-07-03
2	Gulariya	Bardiya	39.5/2023-07-21	38.0/2022-07-15
3	Jajarkot	Jajarkot	35.5/2023-07-23	35.0/2017-07-10

Table 4: List of stations breaking July's lowest daily minimum temperature in July 2023.

S.N.	Station Name	District	Record break minimum temperature (°C)/Date	Previous lowest minimum temperature (°C)/Date
1	Parasi	Nawalparasi-West	16.0/2023-07-04	20.2/2013-07-04
2	Nagma	Kalikot	6.0/2023-07-01	7.5/2014-07-02





**Government of Nepal**  
**Ministry of Energy, Water Resource and Irrigation**  
**Department of Hydrology and Meteorology**  
**Climate Division (Climate Analysis Section)**  
**Babarmahal, Kathmandu**

**Annex 1: Monthly precipitation and temperature data of July 2023**

Station	Latitude	Longitude	Elevation	Precipitation						Temperature						
				Total (mm)	% of Normal	No. of Rainy Days				24hr Highest precipitation (mm)/Date	Maximum			Minimum		
						≥1.0mm	≥10.0mm	≥25.0mm	≥50.0mm		Average (°C)	Departure from normal (°C)	Highest temperature / Date	Average (°C)	Departure from normal (°C)	Lowest temperature / Date
Baglung	28.2636	83.6003	964	582.9	106.3	27.0	15.0	9.0	3.0	70.6/31	32.7	1.4	36.5/20	22.1	0.3	18.8/2
Bahrabise	27.7887	85.9000	884	723.4	110.2	31.0	22.0	11.0	2.0	91.3/13	31.4	-	34.5/31	22.4	-	21.5/8
Baitadi (Gothalapani)	29.5574	80.4132	1352	375.4	119.9	20.0	12.0	7.0	1.0	51.6/23	29.7	-	35.3/31	20.8	-	19.5/5
Bajura (Martadi)	29.4570	81.4804	1598	570.8	111.5	31.0	17.0	9.0	1.0	50/4	28.1	-	30.4/31	19.7	-	15.9/2
Bandipur	27.9418	84.4064	991	413.6	94.9	21.0	11.0	5.0	3.0	81.7/25	29.4	-	31/8	17.6	-	16/2
Bhairahawa Airport	27.5068	83.4204	108	435.3	87.4	17.0	9.0	5.0	3.0	97.6/2	34.2	0.7	37.2/20	26.9	0.6	24.5/31
Bhaktapur	27.6767	85.4240	1315	330.7	97.1	25.0	12.0	4.0	0.0	39.2/31	30.6	-	33/11	21.6	-	20.5/8
Bijuwar Tar	28.1035	82.8520	835	302.1	98.2	16.0	8.0	4.0	1.0	94.8/25	32.6	-	35.1/20	23.5	-	21.9/18
Biratnagar Airport	26.4840	87.2670	72	482.7	101.5	15.0	10.0	7.0	5.0	108/14	32.8	0.2	36.1/20	26.7	0.8	25/1
Birganj	27.0232	84.8782	67	236.3	49.7	14.0	8.0	3.0	0.0	42.5/12	35.5	-	38/20	27.4	-	20/20
Chainpur (East)	27.2921	87.3170	1277	256.0	93.0	19.0	9.0	3.0	1.0	62.4/21	28.4	0.8	30.2/15	21.1	2.1	19/5
Chainpur (Bajhang)	29.5459	81.2011	1405	291.5	-	27.0	10.0	3.0	0.0	41/24	28.5	-	31.4/20	-	-	-
Changu Narayan	27.7161	85.4268	1502	396.3	97.8	25.0	15.0	6.0	0.0	48.2/25	28.4	-	30.5/22	19.7	-	17.2/5
Chapakot	27.8999	83.8459	617	691.5	140.7	19.0	11.0	8.0	6.0	105.2/4	34.1	1.6	36.7/20	24.3	0.8	22/22
Charikot	27.6902	85.9802	2132	747.4	130.3	29.0	21.0	14.0	2.0	71.5/4	24.7	-	26.8/25	16.4	-	15/9
Chatara	26.8204	87.1592	105	329.7	58.7	18.0	11.0	3.0	1.0	105/13	35.3	-	38.6/31	26.1	-	23.1/2
Chaurjhari Tar	28.6540	82.2103	863	265.2	77.6	21.0	9.0	5.0	0.0	42/24	-	-	-	20.0	-2.8	18.2/26
Chautara	27.7538	85.7321	1552	331.1	69.4	21.0	14.0	5.0	0.0	38.4/18	29.7	-	33.5/12	18.5	-	15/9
Chisapani (Karnali)	28.6472	81.2854	201	638.6	91.1	22.0	15.0	9.0	5.0	95.3/21	33.0	1.0	35.5/8	26.1	0.8	21/25
Dadeldhura	29.3014	80.5878	1879	336.4	103.9	27.0	12.0	2.0	1.0	64.2/31	25.1	0.5	29.4/20	18.1	0.6	17.1/5
Dailekh	28.8381	81.7085	1394	280.9	60.8	27.0	9.0	2.0	1.0	61.2/5	27.8	-1.2	30.8/20	19.7	2.0	17.6/19
Damak	26.6623	87.6988	119	642.4	100.0	22.0	13.0	7.0	4.0	113.9/13	33.3	-	37/19	23.2	-	21/31
Daman	27.6044	85.0920	2265	244.7	-	29.0	9.0	2.0	0.0	44.5/13	22.7	-	26.7/20	15.4	-	14.2/8
Damauli	27.9737	84.2651	347	371.2	92.4	16.0	6.0	5.0	3.0	128/25	34.6	-	38/20	25.3	-	24/18
Darchula New	29.8429	80.5388	887	556.4	-	26.0	17.0	9.0	2.0	79.5/15	31.9	-	36.3/20	22.7	-	20.8/4
Dhangadhi (Attariya)	28.8127	80.5600	184	412.2	77.6	24.0	10.0	6.0	1.0	109.6/5	33.8	0.6	37.9/20	26.1	0.3	24/1
Dhankuta	26.9832	87.3460	1192	92.1	38.5	14.0	1.0	0.0	0.0	17.4/13	29.4	1.7	32.1/22	20.9	0.2	20.1/5
Dharan Bazar	26.7922	87.2978	310	515.0	94.7	17.0	11.0	8.0	1.0	168.4/13	32.6	-	35.5/19	25.6	-	24.2/13
Dhulikhel	27.6161	85.5655	1543	304.1	78.4	21.0	12.0	4.0	0.0	43/13	27.8	2.0	30/8	19.2	0.3	18.5/1
Dhunchhe	28.1053	85.3077	2005	456.5	83.9	28.0	19.0	7.0	0.0	39/18	23.2	-0.9	27.6/20	17.4	1.0	16.2/26
Dhunibesi	27.7229	85.1643	991	365.5	88.5	23.0	13.0	7.0	0.0	42.4/24	31.2	0.6	34.5/22	22.6	0.5	21/17
Diktel	27.2125	86.7919	1612	307.9	91.3	22.0	10.0	4.0	1.0	62.2/4	24.6	-	27.5/19	19.2	-	17.5/4
Dipayal (Doti)	29.2621	80.9369	563	223.6	97.0	18.0	6.0	2.0	2.0	58.4/1	33.5	-0.6	37/20	25.0	0.6	23.9/1
Dumkauli	27.6807	84.2285	183	612.1	99.4	13.0	12.0	11.0	4.0	142/12	35.5	1.8	39/21	26.2	0.4	20/25
Dunai	28.9507	82.8960	2098	107.1	126.8	24.0	3.0	0.0	0.0	20.5/15	28.7	-	31/30	15.4	-	14.5/2
Gaida (Kankai)	26.6569	87.8607	107	591.6	80.5	24.0	14.0	8.0	5.0	107.2/13	32.9	-0.1	36.7/31	26.2	2.1	23.5/9
Gaur	26.7671	85.3130	77	129.4	34.6	7.0	4.0	2.0	0.0	45/30	35.2	1.4	37.8/19	24.5	-1.0	22.4/2
Ghorai (Dang)	28.0372	82.4842	663	374.2	88.9	25.0	10.0	7.0	1.0	59.8/25	31.2	0.8	33.7/20	24.4	1.3	22.7/1
Godavari	27.5929	85.3788	1527	370.9	82.0	24.0	10.0	7.0	1.0	51.5/5	27.0	1.1	30/31	18.7	0.2	17.5/8
Gorkha (Birenchowk)	27.9714	84.5894	724	315.6	76.5	19.0	10.0	4.0	1.0	85.7/15	32.0	1.2	35.5/20	23.7	0.9	21.5/15
Gulariya	28.2128	81.3452	126	339.5	88.1	14.0	6.0	2.0	1.0	164.8/25	34.0	-	39.5/21	27.1	-	24.5/25
Hardinath	26.8000	85.9833	93	116.6	-	9.0	2.0	2.0	1.0	61.2/5	33.2	-	36/19	27.5	-	24.7/2
Hetauda N.F.I.	27.4202	85.0252	452	385.1	56.3	21.0	10.0	5.0	1.0	74.3/14	32.7	0.5	35.2/22	25.2	1.4	23.3/15
Humde	28.6399	84.0881	3401	84.8	-	16.0	0.0	0.0	0.0	9.8/2	19.0	-	22.5/31	11.0	-	9.2/8
Ilam Tea Estate	26.9096	87.9231	1208	224.0	57.4	18.0	8.0	4.0	0.0	43.7/4	26.2	0.2	28.9/23	21.0	1.9	19.8/15
Jajarkot	28.6990	82.2001	1236	318.8	72.1	22.0	13.0	3.0	0.0	41.8/14	31.6	-	35.5/23	16.7	-	14/2
Jalesor	26.6522	85.8073	68	65.6	24.8	8.0	3.0	0.0	0.0	24/5	34.6	0.7	37.5/31	27.5	1.6	25/2
Janakpur Airport	26.7097	85.9172	76	106.6	24.3	10.0	4.0	0.0	0.0	20/5	34.2	1.3	38/31	27.9	1.4	25/5



**Government of Nepal**  
**Ministry of Energy, Water Resource and Irrigation**  
**Department of Hydrology and Meteorology**  
**Climate Division (Climate Analysis Section)**  
**Babarmahal, Kathmandu**

Station	Latitude	Longitude	Elevation	Precipitation						Temperature						
				Total (mm)	% of Normal	No. of Rainy Days				24hr Highest precipitation (mm)/Date	Maximum			Minimum		
						≥1.0mm	≥10.0mm	≥25.0mm	≥50.0mm		Average (°C)	Departure from normal (°C)	Highest temperature / Date	Average (°C)	Departure from normal (°C)	Lowest temperature / Date
Jiri	27.6304	86.2321	1877	625.0	98.1	27.0	17.0	10.0	3.0	70.5/10	24.1	-0.1	26.6/22	17.6	0.4	13.6/6
Jomsom	28.7840	83.7298	2741	72.5	155.0	16.0	2.0	0.0	0.0	11.4/7	22.9	0.1	25/13	11.1	-3.0	9.5/7
Jumla	29.2747	82.1796	2363	138.9	78.2	24.0	4.0	0.0	0.0	17.3/16	25.8	0.7	28.4/21	16.5	0.6	15.7/14
Jumla Airport	29.2740	82.1942	2384	154.4	-	22.0	4.0	0.0	0.0	22/16	25.3	-	28/21	16.4	-	15.6/5
Kanyam Tea Estate	26.8681	88.0783	1570	436.5	56.6	26.0	11.0	5.0	4.0	112.2/4	24.8	1.9	29/19	19.0	1.9	17.6/18
Karmaiya	27.1330	85.4841	139	285.2	52.2	18.0	8.0	5.0	0.0	45/30	34.1	0.6	36.5/11	26.2	0.0	25/14
Kathmandu Airport	27.7038	85.3562	1337	399.1	104.0	28.0	12.0	6.0	2.0	75.2/18	29.5	0.8	32.3/20	20.8	0.5	19.6/18
Khadbari	27.3911	87.2044	1064	401.7	-	23.0	14.0	5.0	1.0	54.6/14	29.8	-	32.5/9	22.9	-	21/5
Khairini Tar	28.0270	84.0866	515	610.3	118.4	22.0	11.0	7.0	5.0	115.5/30	33.5	0.7	35.8/20	24.4	0.2	22.6/15
Khajura (Nepalganj)	28.1137	81.5903	129	235.4	60.3	16.0	8.0	4.0	0.0	44.6/5	35.4	1.6	38/22	26.9	1.0	24.8/1
Khanchikot	27.9221	83.1298	1801	622.7	129.8	19.0	10.0	6.0	4.0	178.3/4	24.9	1.4	29/20	17.7	0.0	16.5/1
Khokana	27.6438	85.2967	1309	177.6	52.0	21.0	7.0	1.0	0.0	26.5/31	29.2	-	30.6/11	20.7	-	19.4/31
Khudi Bazar	28.2822	84.3564	838	1042.2	119.6	28.0	22.0	17.0	7.0	131.7/4	30.5	-0.1	36.5/31	20.6	-1.0	17.5/29
Khumaltar	27.6517	85.3257	1334	221.3	76.6	24.0	7.0	1.0	0.0	34.5/5	29.2	1.4	31.2/11	21.2	0.7	19.6/25
Kushma	28.2249	83.6769	900	683.4	97.4	23.0	17.0	11.0	5.0	80.8/21	32.0	0.8	35/20	22.3	0.5	21/1
Lahan	26.7327	86.4776	110	161.5	47.8	12.0	6.0	1.0	0.0	35.1/5	34.2	-	37/19	27.3	-	25/13
Lete	28.6327	83.6092	2490	382.9	137.8	29.0	15.0	3.0	0.0	45.8/30	21.5	-	26.5/20	15.1	-	14/7
Libang Gaun	28.3062	82.6323	1314	326.8	88.9	20.0	12.0	4.0	0.0	46.2/27	30.3	-	33.5/20	19.5	-	18/19
Lumbini	27.4703	83.2761	95	385.0	97.7	16.0	8.0	5.0	2.0	111.5/31	34.6	-	37.5/20	27.6	-	25.5/18
Lumle	28.2965	83.8179	1738	1156.0	78.5	28.0	22.0	18.0	9.0	134.8/15	24.1	0.3	27/20	18.0	0.2	17/15
Mahendra Nagar	28.9548	80.2305	197	490.6	95.4	21.0	12.0	7.0	2.0	122/1	33.5	0.2	38/20	26.5	0.8	24.5/1
Mangalsen	29.1361	81.2501	1310	336.5	97.9	19.0	8.0	5.0	1.0	62.1/5	29.5	-	33.6/20	20.9	-	19.5/1
Manma	29.1488	81.6135	1729	286.1	-	27.0	11.0	2.0	0.0	37.3/1	25.1	-	28/20	18.8	-	17/19
Manthali	27.3947	86.0612	497	77.0	28.5	17.0	1.0	0.0	0.0	10.4/22	34.4	-	36.8/11	24.4	-	23.5/8
Manusmara	26.9280	85.4451	90	320.5	73.1	12.0	6.0	5.0	1.0	113.2/4	33.6	0.1	36.5/19	27.3	1.1	25/13
Musikot(Rukumkot)	28.6190	82.4625	1412	480.0	83.3	28.0	16.0	8.0	0.0	47.5/21	28.6	0.5	31.8/20	20.7	1.2	19.6/15
Nagarkot	27.6933	85.5209	2147	414.4	86.8	27.0	9.0	5.0	3.0	64.3/18	22.1	-0.1	28.5/1	16.1	0.5	15/6
Nagma	29.2006	81.9106	2017	114.9	77.5	21.0	2.0	0.0	0.0	12/5	25.8	-	29/21	16.5	-	6/1
Nepalgunj Airport	28.1006	81.6682	165	255.9	53.0	17.0	10.0	4.0	0.0	48/12	34.1	0.3	37.5/20	27.0	1.2	25/1
Nepalgunj(Reg.Off.)	28.0520	81.6228	141	191.7	49.7	11.0	6.0	3.0	1.0	59/5	34.6	1.2	38/20	26.7	0.1	24.5/5
Nuwakot	27.9150	85.1646	966	463.1	95.1	24.0	15.0	6.0	2.0	56.4/18	30.5	0.1	32.5/11	22.4	0.5	20.6/26
Okhaldhunga	27.3081	86.5042	1731	479.5	114.7	21.0	11.0	6.0	3.0	92.9/24	25.3	0.4	27.3/20	18.5	0.8	16.8/25
Oli Gaun (Patkani)	29.1559	81.2831	989	296.2	-	22.0	9.0	4.0	0.0	45.5/24	30.5	-	31.6/14	18.5	-	15.6/19
Pakhribas	27.0463	87.2925	1720	333.4	87.0	21.0	8.0	6.0	1.0	66/4	23.9	0.5	26.5/22	16.0	-1.9	15/10
Panchkhal	27.6451	85.6209	857	166.7	59.7	20.0	4.0	3.0	0.0	35/14	33.6	1.7	35.8/12	23.5	1.0	22.5/18
Parasi	27.5193	83.6622	112	289.6	62.7	15.0	10.0	5.0	0.0	42/15	33.4	-	36/19	26.8	-	16/4
Parwanipur	27.0789	84.9327	87	484.3	103.9	15.0	7.0	5.0	4.0	153.5/29	33.8	0.8	36.5/20	26.8	0.5	24.5/13
Patan new	29.4664	80.5506	1299	241.2	-	24.0	8.0	2.0	0.0	34/25	-	-	-	-	-	-
Phattepur	26.7305	86.9348	101	568.7	108.8	15.0	10.0	9.0	4.0	98.5/24	33.8	0.0	38.4/21	26.5	1.0	20.6/24
Phidim (Panchther)	27.1437	87.7656	1157	201.6	68.5	19.0	8.0	2.0	0.0	43.3/21	30.5	1.3	33.2/22	22.2	0.6	21/15
Pokhara Airport	28.2002	83.9795	827	870.4	92.5	22.0	17.0	9.0	4.0	174.4/30	30.8	0.4	33.6/20	22.5	0.1	18.8/26
Pusma Camp	28.8755	81.2327	953	381.8	91.5	19.0	8.0	5.0	3.0	70.9/1	28.7	0.0	31/19	21.9	-0.3	20.1/23
Rajbiraj	26.5407	86.7425	68	488.6	118.8	17.0	8.0	5.0	3.0	185.2/5	33.0	0.1	36.1/31	26.7	1.5	24/2
Rampur	27.6540	84.3508	189	586.5	111.0	15.0	10.0	9.0	6.0	148.5/25	33.5	0.0	36.7/21	26.3	1.0	23.5/15
Rara	29.5401	82.0818	2989	196.0	-	23.0	7.0	1.0	0.0	30.6/26	20.9	-	23.5/21	12.8	-	9/4
Salleri	27.5051	86.5862	2383	315.6	74.5	28.0	13.0	3.0	0.0	38.5/25	25.9	-	29.5/9	14.3	-	11/12
Salyan Bazar	28.3821	82.1423	1557	164.9	67.1	17.0	5.0	1.0	0.0	38.7/17	-	-	-	19.9	0.5	18.6/1
Semari	27.4682	83.7861	110	313.4	58.7	20.0	8.0	6.0	1.0	68/12	34.2	-2.0	37.5/5	27.1	1.8	25.2/3
Simara Airport	27.1642	84.9800	137	470.0	85.6	16.0	9.0	5.0	2.0	150.7/29	34.1	1.1	36.8/20	26.4	0.7	24/15
Simikot	29.9715	81.8161	2993	179.5	-	22.0	8.0	0.0	0.0	23.5/27	20.9	-	24.3/21	13.6	-	11.7/29



**Government of Nepal**  
**Ministry of Energy, Water Resource and Irrigation**  
**Department of Hydrology and Meteorology**  
**Climate Division (Climate Analysis Section)**  
**Babarmahal, Kathmandu**

Station	Latitude	Longitude	Elevation	Precipitation							Temperature						
				Total (mm)	% of Normal	No. of Rainy Days				24hr Highest precipitaion (mm)/Date	Maximum			Minimum			No. of days with maximum temp > 30°C
						≥1.0mm	≥10.0mm	≥25.0mm	≥50.0mm		Average (°C)	Departure from normal (°C)	Highest temperature / Date	Average (°C)	Departure from normal (°C)	Lowest temperature / Date	
Sindhuli Madhi	27.2281	85.9050	556	412.8	62.6	23.0	12.0	7.0	1.0	51.5/4	32.3	1.1	35.5/19	24.0	0.9	23.1/6	29
Siraha	26.6561	86.2117	63	247.8	60.0	10.0	4.0	3.0	1.0	122.4/5	34.2	-	37.5/19	27.4	-	24.5/5	30
Surkhet Airport	28.5879	81.6352	683	321.7	69.2	20.0	11.0	6.0	0.0	47/3	32.3	1.1	35.1/20	24.2	0.6	22.7/1	29
Syangja	28.0988	83.8722	871	741.2	94.3	21.0	15.0	12.0	5.0	168/15	32.2	1.2	36/20	23.2	1.1	22/18	28
Tamghas	28.0636	83.2435	1547	523.6	108.5	23.0	14.0	9.0	3.0	95.7/25	26.8	0.7	29.5/19	19.0	0.1	17.8/1	0
Tansen	27.8637	83.5387	1183	736.2	159.9	19.0	14.0	9.0	5.0	167/4	29.2	-	32.6/19	21.5	1.8	20/1	13
Taplejung	27.3586	87.6700	1744	375.9	97.0	25.0	11.0	4.0	2.0	67.2/19	25.9	0.6	28.2/31	18.1	-0.1	16.8/5	0
Tarahara	26.6987	87.2786	120	543.4	99.8	17.0	8.0	6.0	4.0	151/12	33.3	1.1	36.5/19	26.5	1.1	25/1	30
Taulihawa	27.5711	83.0672	106	358.7	86.0	16.0	8.0	5.0	3.0	99/31	33.4	0.2	36.5/20	27.0	1.1	24.2/1	29
Terhathum	27.1230	87.5362	1525	216.0	93.6	16.0	7.0	2.0	1.0	76.4/5	26.2	-0.3	29/19	19.2	1.0	18/5	0
Thakmarpha	28.7409	83.6816	2655	96.0	127.2	18.0	2.0	0.0	0.0	10.9/21	21.8	-0.2	24/10	12.3	-0.7	10.5/7	0
Tikapur	28.5366	81.115	149	378.1	78.64	16	10	6	3	76.7/25	35	1.26	38.3/20	25	-0.45	22/1	29
Udayapur Gadhi	26.913	86.5397	469	290.1	64.9	17	9	4	1	68.4/13	32	1.51	35.5/15	25	0.95	23.2/13	29

Note:

- “mm” = millimeter; “hr” = hour; “temp” = temperature; “-” = Data Not Available.
- This summary is prepared based on the precipitation and temperature received at 111 meteorological stations during July, 2023. Out of 111 stations, 100 stations have normal precipitation data, 70 stations have normal maximum temperature data and 71 stations have normal minimum temperature data. Normal precipitation/temperature is the average of the monthly precipitation/temperature for period of 1991-2020.