



Government of Nepal
Ministry of Energy, Water Resource and Irrigation
Department of Hydrology and Meteorology
Climate Division (Climate Analysis Section)
Babarmahal, Kathmandu

3rd July 2025

Preliminary Precipitation and Temperature Summary
Pre-monsoon Season (March – May 2025)

Highlights

Precipitation over the country as a whole was 118.9% of the normal precipitation of the season. Most parts of the country recorded above normal maximum and minimum temperature.

Onset of Monsoon

Monsoon entered eastern Nepal covering most parts of Koshi Province on 29th May, fifteen days earlier than the normal onset date of June 13 (Figure 1).

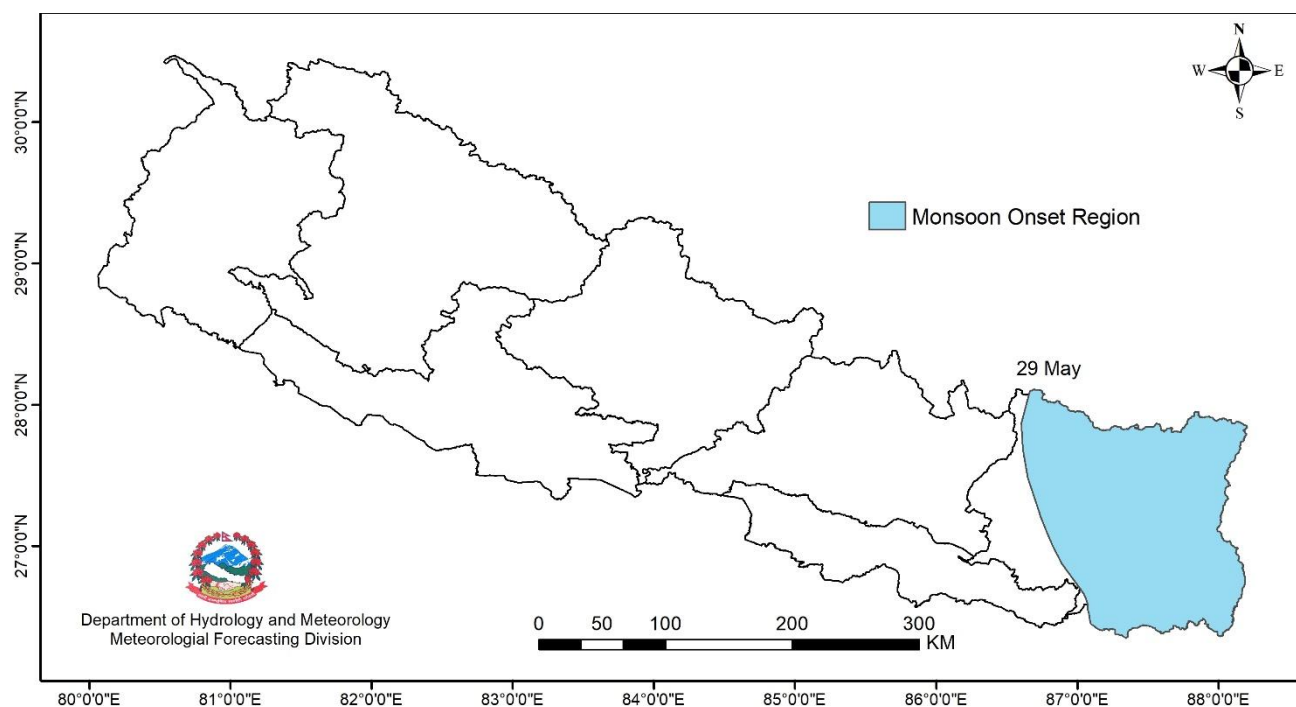


Figure 1: Monsoon onset date in 2025.

Precipitation

Most parts of the country recorded precipitation between 100 and 300 mm, while some areas in Gandaki Province, Bagamati Province, and most parts of Koshi Province received precipitation over 300 mm, with certain regions in Koshi Province recording precipitation exceeding 800 mm. (Figure 2). Most parts of the country recorded normal-above normal precipitation (Figure 3). However, some parts of Sudurpaschim Province, Gandaki Province, Bagamati Province and Koshi Province recorded below normal precipitation.

Highest seasonal precipitation of 990.3 mm was recorded at Num station while the highest percentage of normal precipitation of 328.3% was recorded at Chaurjharitar station (Annex 1). Based on the average of 120 stations shown in figure 3, Nepal received 118.9% of the normal precipitation of the season. In general, less than 90% of normal precipitation is considered as below normal, 90 to 110% is considered as near normal, and more than 110% of normal precipitation is considered as above normal precipitation for the season.



Government of Nepal
Ministry of Energy, Water Resource and Irrigation
Department of Hydrology and Meteorology
Climate Division (Climate Analysis Section)
Babarmahal, Kathmandu

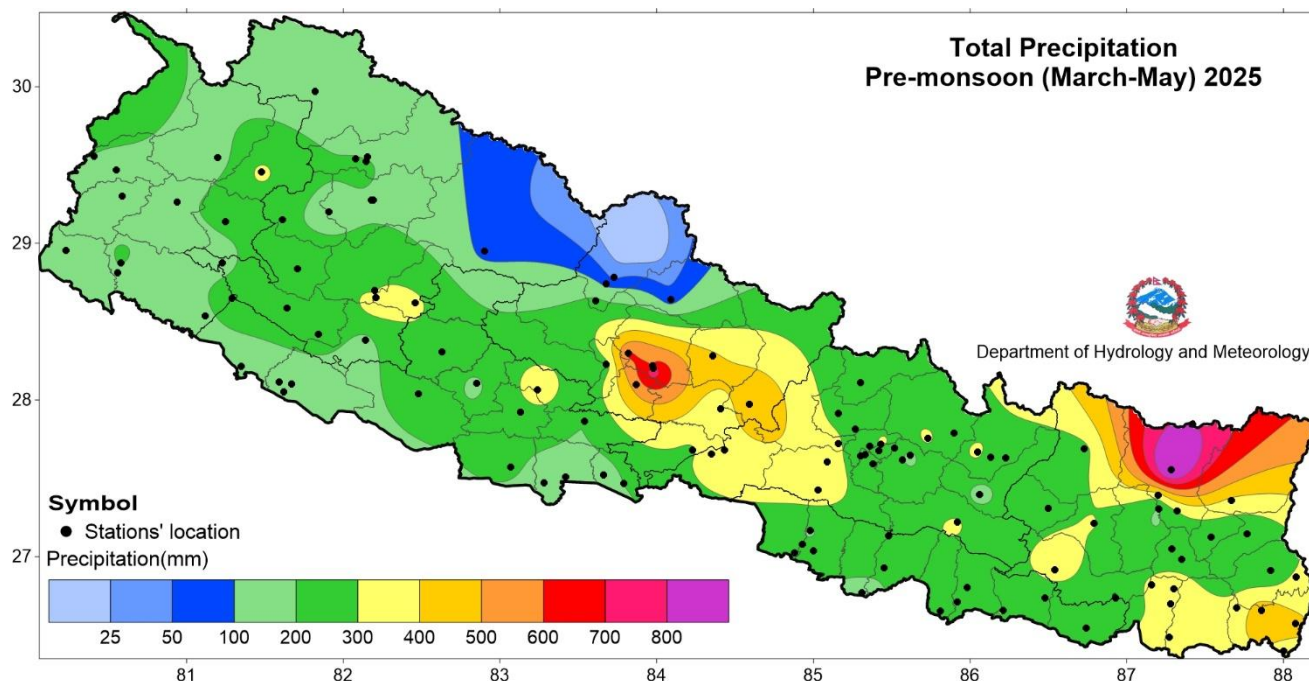


Figure 2: Total precipitation in Pre-monsoon 2025

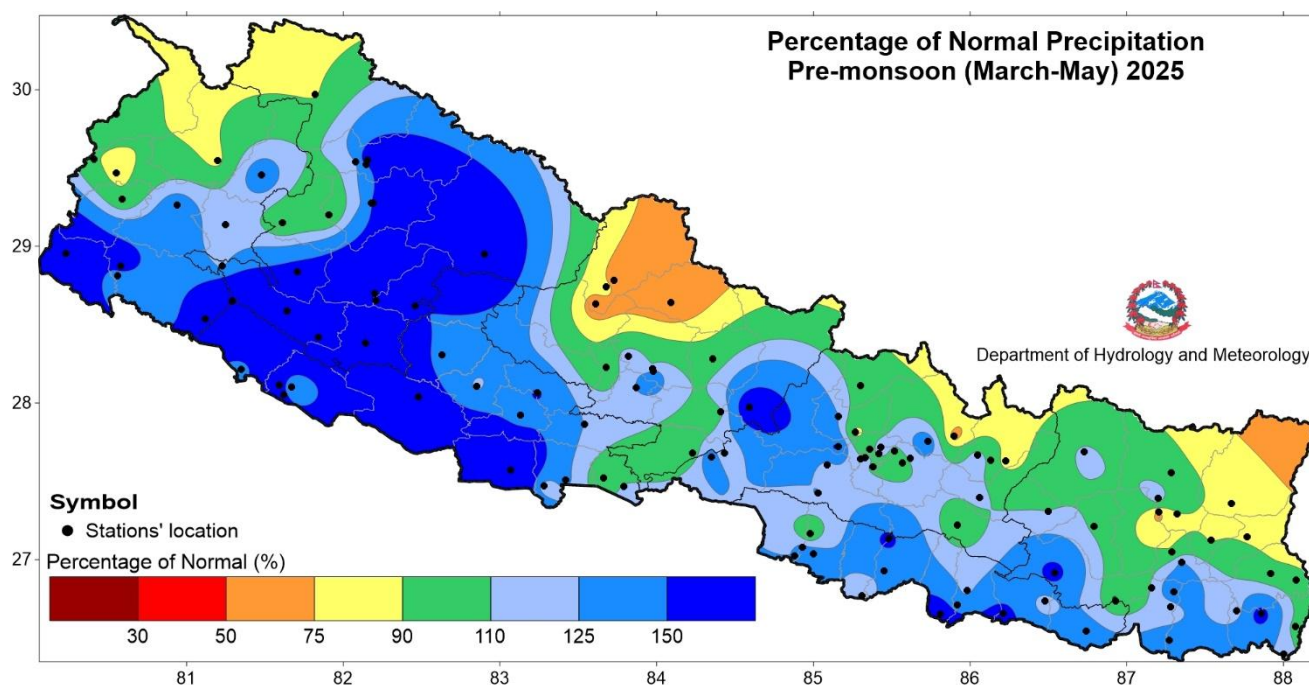


Figure 3: Percentage of normal precipitation in Pre-monsoon 2025

The temporal distribution of the seasonal cumulative average of daily precipitation shows that precipitation remained below normal to near normal until the second week of April, and stayed above normal for the remainder of the pre-monsoon season (Figure 4). The southern part of Sudurpaschim Province and Madhesh Province remained relatively drier during the pre-monsoon season, as the number of rainy days (precipitation ≥ 1 mm) generally fell within the range of 10 to 15 days, whereas most stations in the Hilly region (the central part of Nepal between the northern mountains and southern plains) recorded over 20 rainy days, indicating a more active



Government of Nepal
Ministry of Energy, Water Resource and Irrigation
Department of Hydrology and Meteorology
Climate Division (Climate Analysis Section)
Babarmahal, Kathmandu

pre-monsoon precipitation in those areas. (Figure 5). Over the recent five years, three years along with 2025 have shown a positive precipitation anomaly in Pre-monsoon season. The country averaged total precipitation of Pre-monsoon 2025 was higher since 2022 (Figure 6).

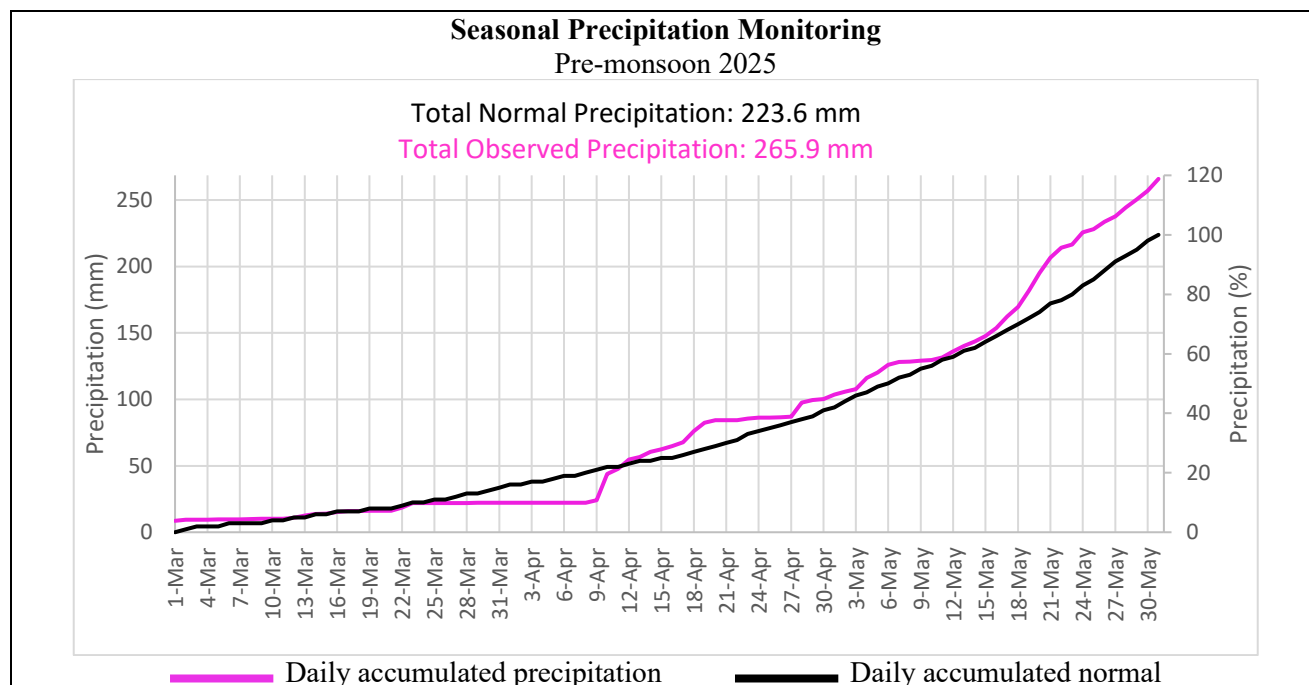


Figure 4: Cumulative average of daily normal and observed precipitation during Pre-monsoon 2025

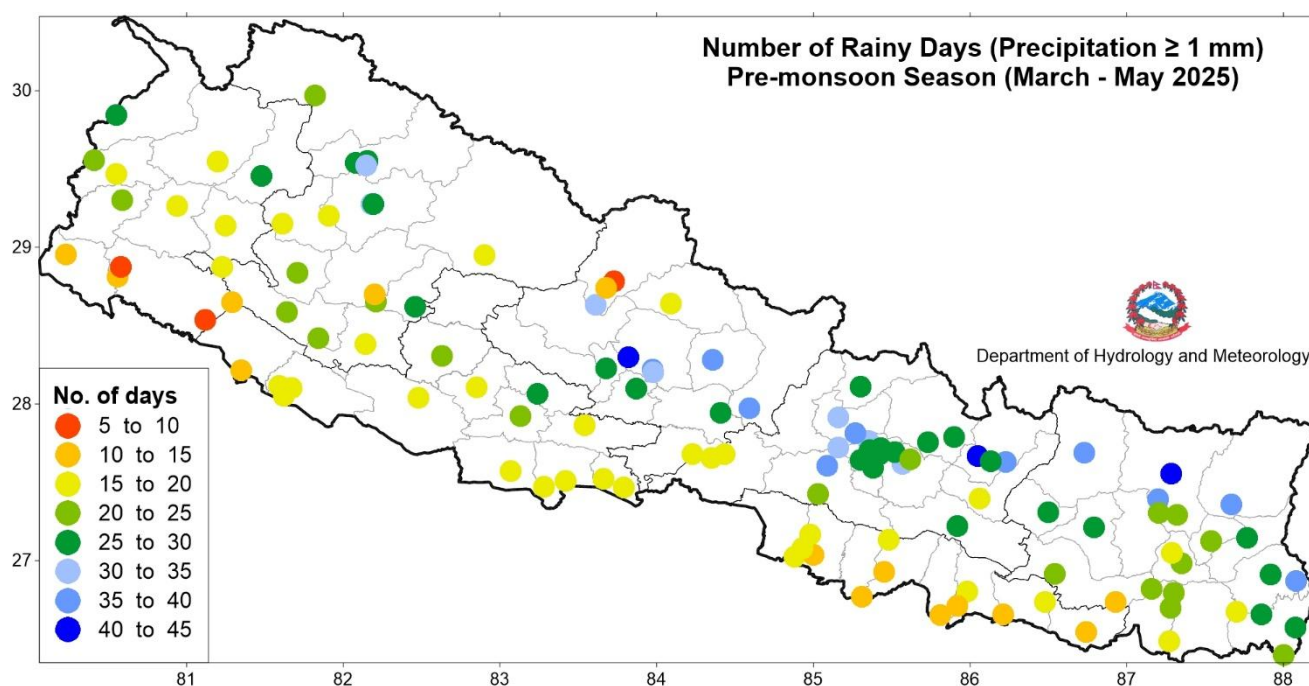


Figure 5: Number of rainy days during Pre-monsoon 2025



Government of Nepal
Ministry of Energy, Water Resource and Irrigation
Department of Hydrology and Meteorology
Climate Division (Climate Analysis Section)
 Babarmahal, Kathmandu

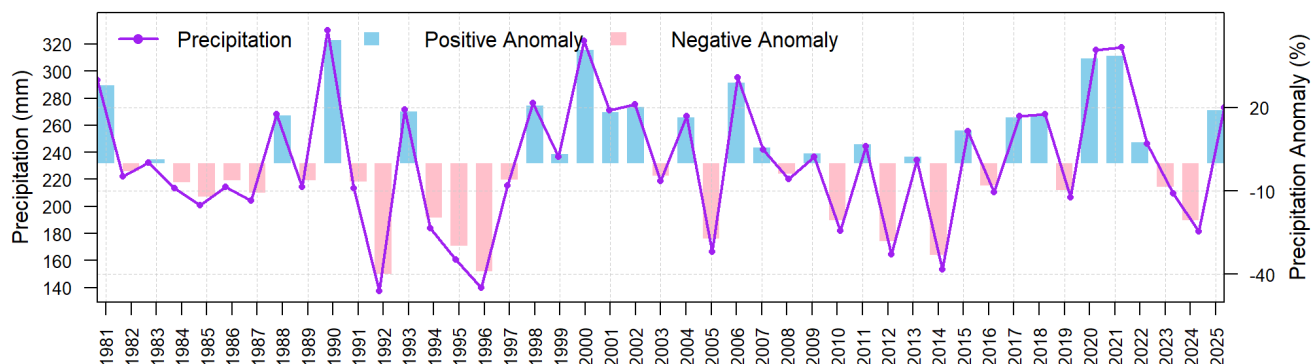


Figure 6: All Nepal seasonal total precipitation of Pre-monsoon Season from 1981 to 2025 (average of 103 stations)

Maximum Temperature

Maximum temperature of Terai remained above 33°C across most parts (Figure 7). Most parts of the country recorded near-normal to above normal maximum temperature while a few parts across all provinces recorded below normal maximum temperature (Figure 8).

Godavari (west) station and Humde station recorded the highest and lowest seasonal average maximum temperature of 35.8°C and 14.6°C respectively. Similarly, the highest seasonal anomaly of 2.9°C was recorded at Baglung station and the lowest of -1.8°C was recorded at Charikot station (Annex 1). The highest daily maximum temperature of 43.5°C was recorded at Godavari (west) station on 28th March daily maximum temperature of 0.6°C was recorded at Simikot Station on 12th January. The country averaged maximum temperature of Pre-monsoon shows warmer conditions in last two years (Figure 9).

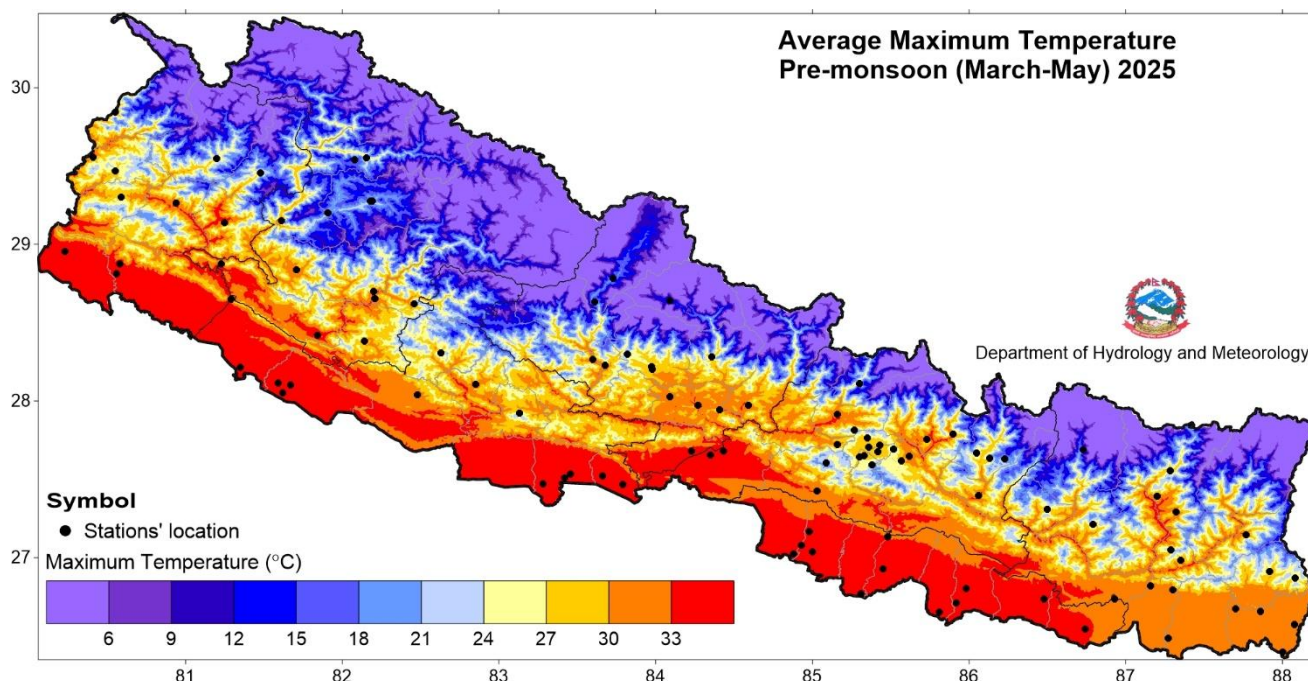


Figure 7: Maximum Temperature in Pre-monsoon 2025.



Government of Nepal
Ministry of Energy, Water Resource and Irrigation
Department of Hydrology and Meteorology
Climate Division (Climate Analysis Section)
 Babarmahal, Kathmandu

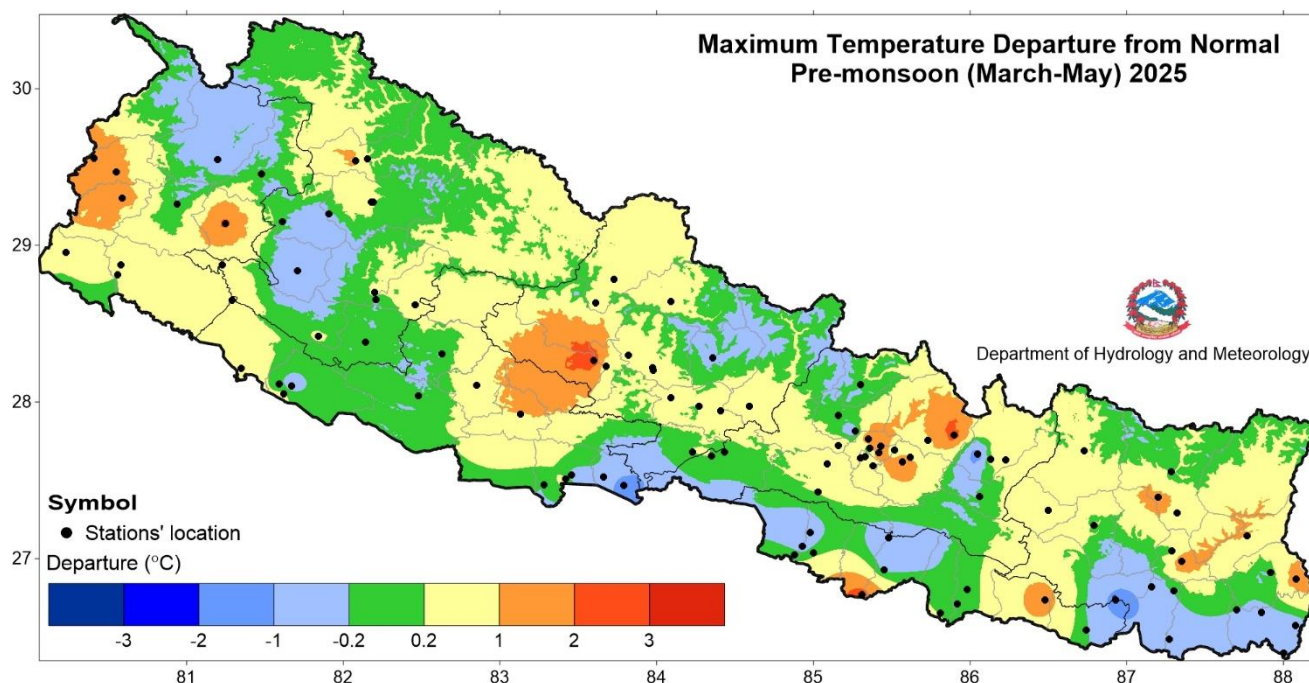


Figure 8: Departure from normal maximum temperature in Pre-monsoon 2025.

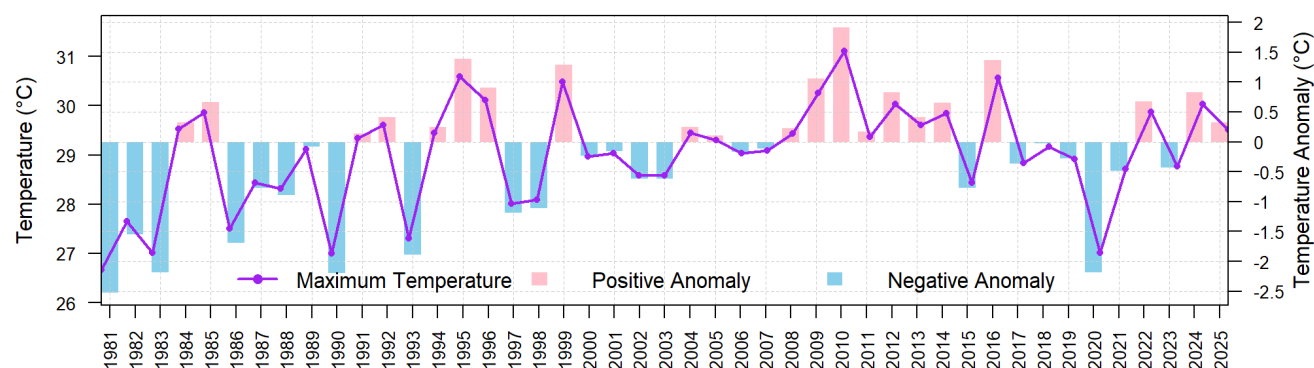


Figure 9: All Nepal seasonal average maximum temperature of Pre-monsoon Season from 1981 to 2025 (average of 62 stations)

Minimum Temperature

The minimum temperature in the most part of Terai remained above 18°C, reaching over 21°C across few parts of Madhesh Province (Figure 10). Most parts of the country recorded above normal minimum temperature while few parts across Sudurpaschim Province, Karnali Province, Gandaki Province and Bagamati Province recorded below normal temperature (Figure 11).

Jalesor station and Humde station recorded the highest and lowest seasonal average minimum temperature of 22.3°C and 1.2°C respectively. Similarly, the highest seasonal anomaly of 4.3°C was recorded at Siraha station and the lowest anomaly of -3.7°C was recorded at Dunai station (Annex 1). The highest daily minimum temperature of 30.0°C was recorded at Bhairahawa Agriculture station on 31st May while the lowest daily maximum temperature of 3.9°C was recorded at Humde station on 1st March. The country's average minimum temperature in Pre-monsoon shows warmer conditions in last two years (Figure 12).



Government of Nepal
Ministry of Energy, Water Resource and Irrigation
Department of Hydrology and Meteorology
Climate Division (Climate Analysis Section)
Babarmahal, Kathmandu

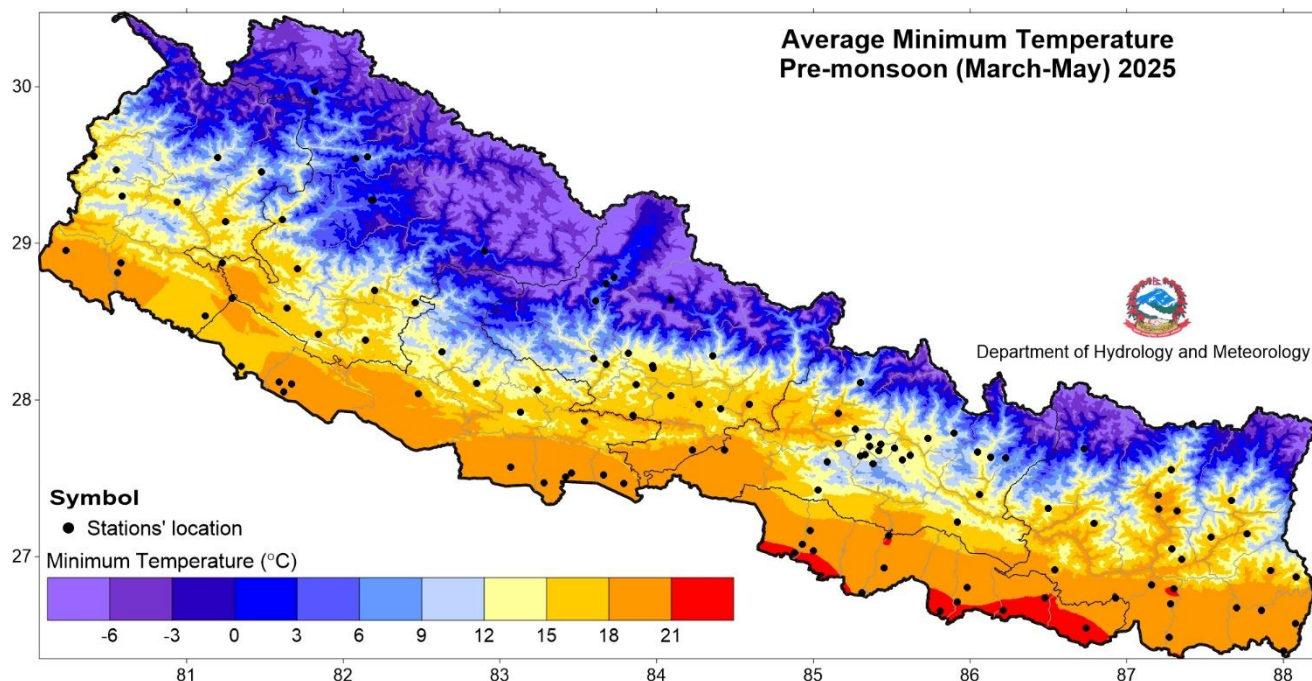


Figure 10: Minimum Temperature in Pre-monsoon 2025

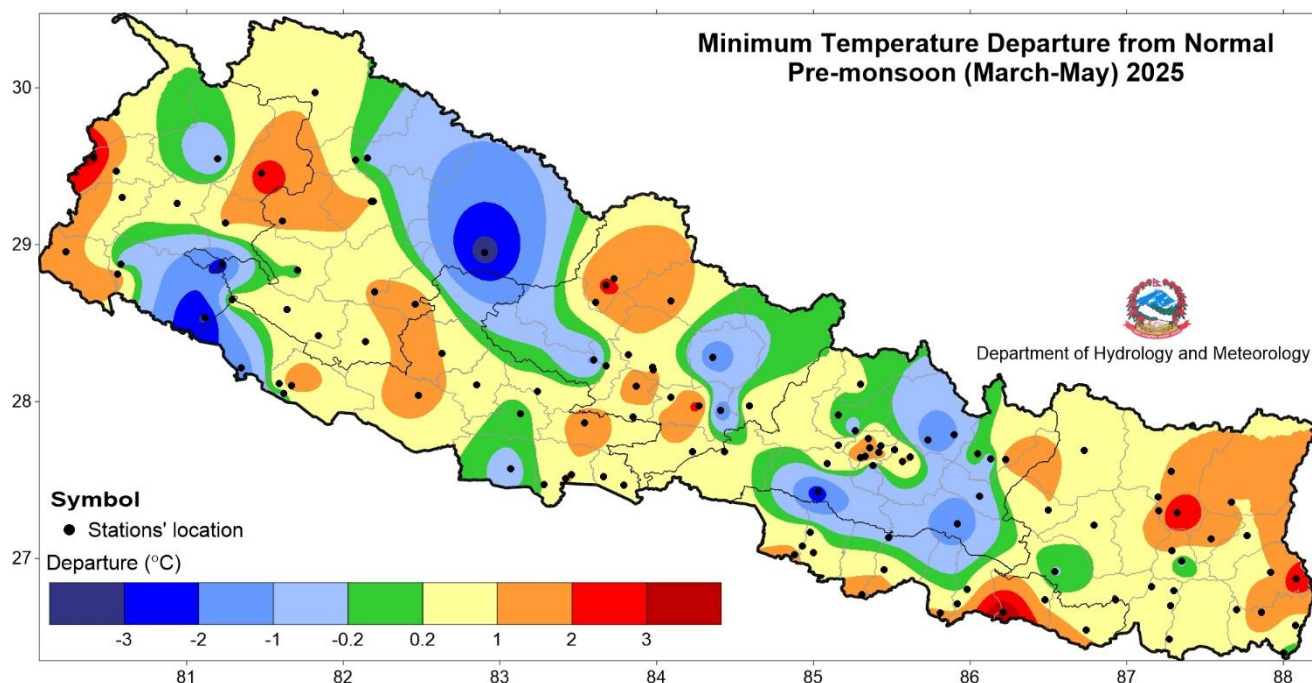


Figure 11: Departure from normal minimum temperature in Pre-monsoon 2025



Government of Nepal
Ministry of Energy, Water Resource and Irrigation
Department of Hydrology and Meteorology
Climate Division (Climate Analysis Section)
 Babarmahal, Kathmandu

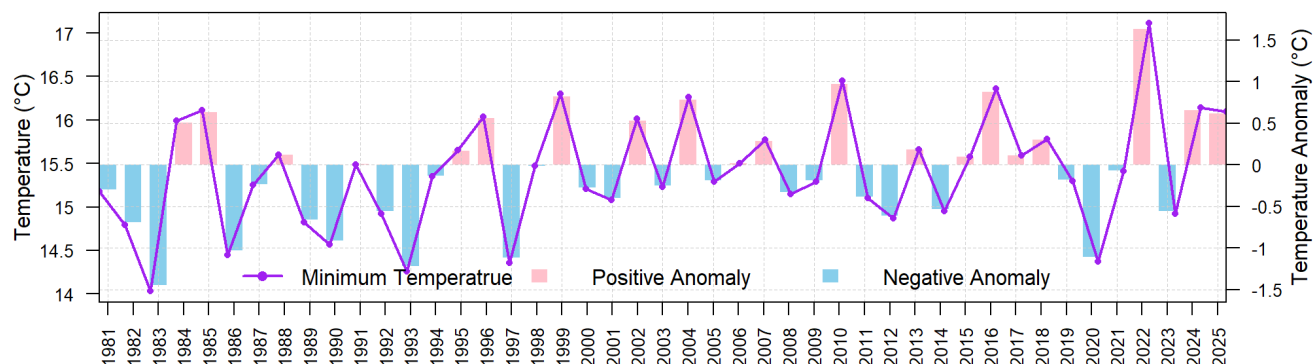


Figure 12: All Nepal seasonal average minimum temperature of Pre-monsoon Season from 1981 to 2025 (average of 60 stations)

Diurnal Temperature Range

Most parts of the country recorded a moderate diurnal temperature range (DTR) between 10°C and 16°C. However, some stations in the Bagmati Province, Gandaki Province, Karnali Province and Sudurpaschim Province experienced higher DTRs above 18°C. (Figure 13).

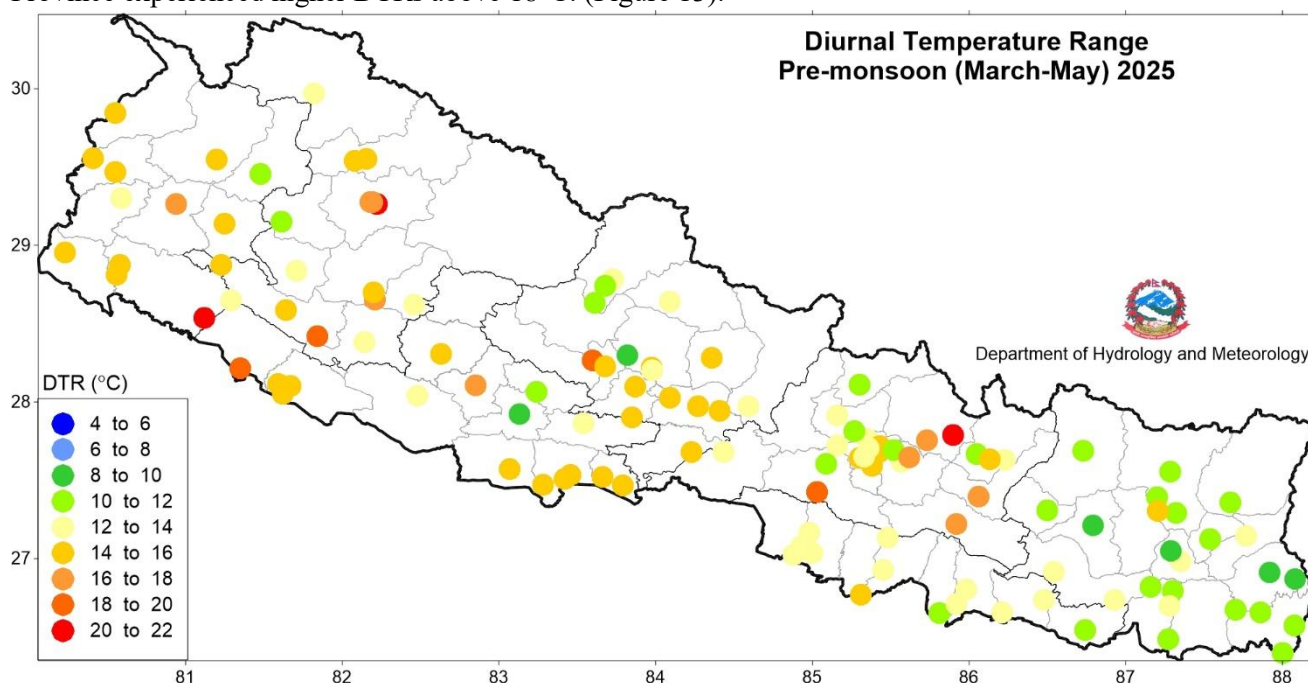


Figure 13: Diurnal temperature range in Pre-monsoon 2025

Drought

Moderate drought condition was observed over northern parts of Gandaki Province during this Pre-monsoon season. Drought has been categorized based on the observed precipitation compared to normal. A drought is defined as moderate, severe and extreme as given in the table below.

Table 1: Drought category

S.N.	Percentage of normal precipitation (%)	Drought category
1	50 - 75	Moderate drought
2	30 - 50	Severe drought
3	< 30	Extreme drought



Government of Nepal
Ministry of Energy, Water Resource and Irrigation
Department of Hydrology and Meteorology
Climate Division (Climate Analysis Section)
Babarmahal, Kathmandu

Annex 1: Seasonal precipitation and temperature data of Pre-monsoon 2025

Station	Latitude	Longitude	Elevation	Precipitation			Temperature					
				Total (mm)	Normal	PoN (%)	Maximum			Minimum		
							Average (°C)	Normal	DFN (°C)	Average (°C)	Normal	DFN (°C)
Sudurpaschim Province												
Baitadi (Gothalapani)	29.56	80.41	1352	197.6	214.5	92.1	28.3	26.5*	1.8	14.2	26.5*	3.5
Bajura (Martadi)	29.46	81.48	1598	325.0	225.2	144.3	25.5	25.5*	0.0	13.7	25.5*	2.6
Chainpur (Bajhang)	29.55	81.2	1405	293.7	330.60	88.9	27.6	26.9	0.7	17.2	26.9	3.2
Chisapani (Karnali)	28.65	81.29	201	264.1	118.8	222.3	34.7	33.9	0.8	21.7	33.9	0.6
Dadeldhura	29.30	80.59	1879	167.0	178.4	93.6	25.0	23.7	1.3	12.5	23.7	0.7
Darchula New	29.84	80.55	945	255.9	254*	100.8	31.8	31.2*	0.6	16.4	31.2*	0.7
Dhangadhi (Attariya)	28.81	80.56	184	136.3	110.2	123.7	35.0	34.8	0.2	19.8	34.8	1.7
Dipayal (Doti)	29.26	80.94	563	196.8	139.3	141.3	33.6	33.8	-0.2	16.2	33.8	0.8
Godavari (West)	28.88	80.58	280	208.0	122	170.5	35.8	34.9	0.9	20.9	34.9	-0.4
Mahendra Nagar	28.95	80.23	197	190.1	86.6	219.5	34.5	34.2	0.3	19.1	34.2	1.2
Mangalsen	29.14	81.25	1310	214.4	187.6	114.3	30.1	27.9*	2.2	14.8	27.9*	1.1
Patan new	29.47	80.55	1292	160.2	188.1*	85.2	28.9	27.4*	1.5	14.2	27.4*	0.8
Tikapur	28.54	81.12	149	176.7	111.5	158.4	35.5	35.2	0.3	14.9	35.2	-3.2
Karnali Province												
Chaurjhari Tar	28.65	82.21	863	371.0	113	328.3	32.2	32.5	-0.3	-	32.5	-
Dallekh	28.84	81.71	1394	271.3	161.4	168.1	27.6	28.7	-1.1	14.3	28.7	0.1
Dipal Gaun	29.26	82.22	2422	-	132	-	-	22.6	-	-	22.6	-
Dunai	28.95	82.9	2098	79.3	38.9	203.8	-	22*	-	4.84	22*	-3.7
Gamadi Shree Nagar	29.55	82.15	2113	185.6	109.1	170.2	24.5	24.3*	0.2	9.98	24.3*	-0.3
Jajarkot	28.7	82.2	1240	288.4	124.7	231.2	29.5	29.1*	0.4	15.1	29.1*	1.1
Jumla	29.27	82.18	2363	194.6	143	136.1	22.9	21.9	1	5.29	21.9	1.1
Jumla Airport	29.27	82.19	2384	188.0	114.6*	164	22.1	21.9*	0.2	4.36	21.9*	0.5
Manma	29.15	81.61	1729	213.2	223.8*	95.3	24.8	24.9*	-0.1	13.1	24.9*	1.2
Mehalkuna	28.42	81.84	464	250.7	128.3*	195.4	34.1	33.8*	0.3	16	33.8*	0.6
Musikot (Rukumkot)	28.62	82.46	1412	322.8	214.3	150.6	27.8	27.1	0.7	14.8	27.1	1.8
Nagma	29.21	81.91	2017	156.8	172.5	90.9	22.7	22.9*	-0.2	-	22.9*	-
Pusma Camp	28.88	81.23	953	163.7	134.1	122.1	29.7	29.5	0.2	15.4	29.5	-2.5
Rara	29.54	82.08	2989	206.7	169*	122.3	17.0	15.8*	1.2	25.9	15.8*	0.1
Salyan Bazar	28.38	82.14	1557	168.9	104	162.4	27.5	27.5	0	15.2	27.5	0.4
Simikot	29.97	81.82	2993	121.0	137.1*	88.3	17.6	15.9*	1.7	4.21	15.9*	0.9
Surkhet Airport	28.59	81.64	720	247.3	136.5	181.1	32.6	32.1	0.5	17	32.1	0.7
Talcha	29.52	82.15	2750	222.3	157.3*	141.3	19.2	17.7*	1.5	-	17.7*	-
Lumbini Province												
Bhairahawa (Agric)	27.53	83.46	112	-	140.2	-	34.5	34.9	-0.4	20.0	34.9	1.0
Bhairahawa Airport	27.51	83.42	108	178.2	136.7	130.3	35.1	34.7	0.4	20.7	34.7	1.1
Bijuwar Tar	28.10	82.85	835	185.3	151.6	122.2	32.5	31.7*	0.8	16.2	31.7*	0.7
Ghorai (Dang)	28.04	82.48	663	241.5	140.9	171.4	31.8	32	-0.2	18.7	32	1.3
Gulariya	28.21	81.35	126	133.7	94.7	141.2	35.2	34.3*	0.9	17.0	34.3*	-1.7
Khajura (Nepalgunj)	28.11	81.59	129	152.8	88.4	172.8	35.0	35.1	-0.1	19.1	35.1	0.6
Khanchikot	27.92	83.13	1801	238.9	179.2	133.3	23.4	22.5	0.9	13.6	22.5	-0.1
Libang Gaun	28.31	82.63	1314	256.0	177.7	144.1	28.3	28.4*	-0.1	13.8	28.4*	1.0
Lumbini	27.47	83.28	95	124.9	109	114.6	34.8	35*	-0.2	19.4	35*	0.2
Nepalgunj Airport	28.1	81.67	165	126.0	95.4	132.1	34.9	35.3	-0.4	20.0	35.3	1.4
Nepalgunj (Reg.Off.)	28.05	81.62	141	146.1	90.4	161.6	35.3	34.9	0.4	20.4	34.9	-0.3
Parasi	27.52	83.66	112	158.1	164.4	96.2	34.6	34.9*	-0.3	19.1	34.9*	0.5
Semari	27.47	83.79	110	200.2	179.8	111.4	34.4	35.8	-1.4	20.4	35.8	0.7
Tamghas	28.06	83.24	1547	365.0	235.8	154.8	25.3	25	0.3	13.6	25	0.6
Tansen	27.86	83.54	1183	200.6	160.8	124.8	28.8	28.6	0.2	16.8	28.6	1.5
Taulihawa	27.57	83.07	106	229.1	89.3	256.6	34.4	35.1	-0.7	18.8	35.1	-0.5
Gandaki Province												
Baglung	28.26	83.60	964	-	238.6	-	32.8	29.9	2.9	13.9	15.1	-1.2
Bandipur	27.94	84.41	991	301.7	288	104.7	28.6	27.9*	0.7	13.0	27.9*	-2.0
Chapkot	27.90	83.85	617	-	269	-	-	31.8	-	17.7	31.8	0.7
Damauli	27.97	84.27	347	-	356	-	33.1	32.9*	0.2	18.7	32.9*	2.5
Dumkauli	27.68	84.23	183	281.8	297.2	94.8	34.5	34.3	0.2	20.2	34.3	0.8
Gorkha	27.97	84.59	724	502.1	285.5	175.9	30.6	29.7	0.9	17.8	29.7	0.9
Humde	28.64	84.09	3401	66.4	114*	58.2	14.6	13.8*	0.8	1.2	13.8*	1.6
Jomsom	28.78	83.73	2741	45.5	70.4	64.7	19.0	18.1	0.9	6.6	18.1	1.9
Khairini Tar	28.03	84.09	515	-	461.5	-	32.6	32	0.6	17.3	32	0.7
Khudi Bazar	28.28	84.36	838	416.4	418.2	99.6	29.2	29.5	-0.3	14.4	29.5	-1.7
Kushma	28.22	83.68	900	248.8	275.8	90.2	30.9	30.6	0.3	15.9	30.6	0.2
Lete	28.63	83.61	2490	226.9	363.5	62.4	18.8	18.4*	0.4	7.2	18.4*	1.1
Lumle	28.30	83.82	1738	618.2	501	123.4	22.5	22	0.5	13.0	22	0.9
Malepatan	28.22	83.97	859	604.6	542.1	111.5	29.2	28.9	0.3	15.2	28.9	0.5
Pokhara Airport	28.2	83.98	827	766.2	560.1	136.8	29.5	29.2	0.3	17.2	29.2	1.2
Syangja	28.1	83.87	871	538.5	430.9	125.0	30.9	29.4	1.5	16	29.4	1.4
Thakmarpha	28.74	83.68	2655	89.0	105.7	84.2	18.8	17.9	0.9	6.86	17.9	2.4
Bagmati Province												
Bahrabise	27.79	85.90	884	230.1	340.8	67.5	33.6	30.9*	2.7	13.2	30.9*	-1.2
Bhaktapur	27.68	85.42	1315	242.0	220.7	109.7	29.4	27.8*	1.6	13.6	27.8*	1.9
Bharatpur	27.68	84.43	216	345.1	316.4*	109.1	34.0	34.2*	-0.2	20.8	34.2*	0.5
Buddhanilakantha	27.76	85.35	1378	325.3	285.7*	113.9	27.8	25.9*	1.9	14.1	25.9*	1.5
Changu Narayan	27.72	85.43	1502	319.6	259.9	123.0	29.1	26.7*	2.4	14.1	26.7*	0.6
Charikot	27.67	86.05	1940	329.8	279.0	118.2	21.2	23*	-1.8	10.7	23*	0.4
Chautara	27.75	85.73	1552	321.2	223.9	143.4	28.7	28.1*	0.6	12.0	28.1*	-1.7
Daman	27.60	85.09	2265	368.8	310.6*	118.7	20.1	19.5*	0.6	9.6	19.5*	0.8
Dhulikhel	27.62	85.57	1543	213.8	216.4	98.8	26.7	24.5	2.2	12.8	24.5	0.9
Dhunche	28.11	85.30	1993	209.0	202.7	103.1	21.7	21.7*	0.0	10.9	21.7*	0.3
Dhuniwesi	27.72	85.16	991	313.4	202.2	155.0	30.6	29.7	0.9	17.5	29.7	0.7
Godavari	27.59	85.38	1527	-	222.3	107.9	25.3	24.9	0.4	10.8	24.9	-0.7
Hetauda N.F.I.	27.42	85.03	452	364.2	289.3	125.9	33.0	32.8	0.2	14.6	32.8	-2.8
Jiri	27.63	86.23	1877	273.3	328.5	83.2	22.6	21.9	0.7	8.7	21.9	1.4
Kabre	27.63	86.13	1755	239.1	226.8*	105.4	25.1	24.7*	0.4	11.2	24.7*	-0.8
Kakani	27.81	85.27	2030	283.4	337.1	84.1	21.3	22.0	-0.7	11.3	22.0	-0.6
Kathmandu Airport	27.70	85.36	1337	221.5	230.0	96.3	27.5	27.9	-0.4	14.3	27.9	1.9
Khokana	27.64	85.30	1309	235.1	214.6	109.6	27.8	26.7*	1.1	12.2	26.7*	1.4
Khumaltar	27.65	85.33	1334	235.4	200.1	117.6	27.4	26.5	0.9	13.6	26.5	1.9
Manthali	27.39	86.06	497	168.6	149.0	113.2	33.5	33.6*	-0.1	17.0	33.6*	-0.7
Nagarkot	27.69	85.52	2147	267.7	255.0	105.0	21.4	21.5	-0.1	10.9	21.5	0.6
Nuwakot	27.91	85.16	966	265.0	209.6	126.4	29.9	30.1	-0.2	17.5	30.1	0.1
Panchkhal	27.65	85.62	857	170.1	151.9	112.0	31.2	30.3	0.9	14.7	30.3	1.2
Rampur	27.65	84.35	189	392.1	271.4	144.5	34.4	34.2	0.2	-	34.2	-
Sindhuli Madhi	27.22	85.92	556	315.9	327.3	96.5	32.4	31.2*	1.2	15.4	31.2*	-1.7
Madhesh Province												
Birganj	27.02	84.88	67	214.2	170.7	125.5	35.1	35*	0.1	21.8	35*	1.3
Gaur	26.77	85.31	77	178.4	157.3	113.4	34.8	32.2	2.6	20.8	32.2	1.5
Hardinath	26.80	85.98	93	228.6	187.4*	122.0	33.1	33.1*	0.0	20.3	33.1*	0.3
Jalesor	26.65	85.81	68	240.7	132.7							