



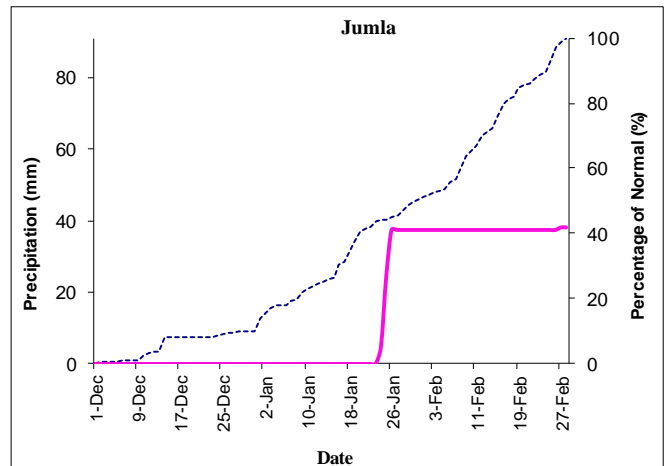
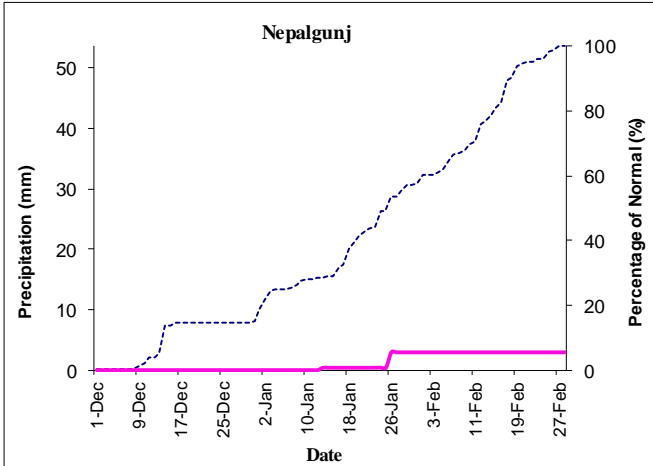
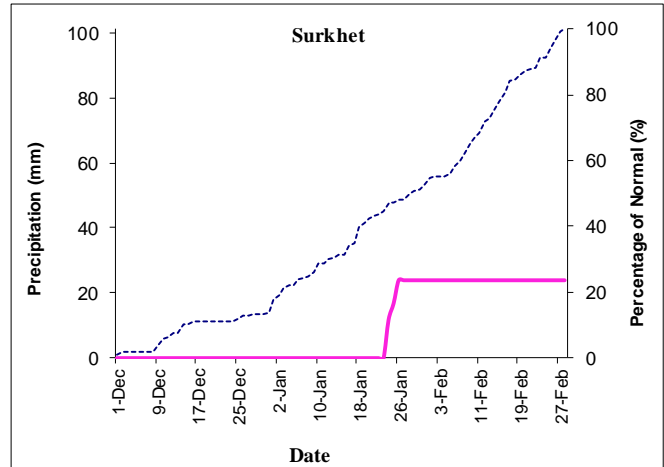
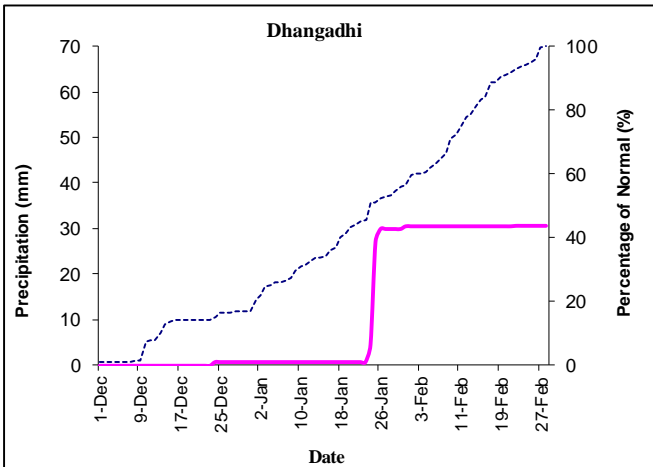
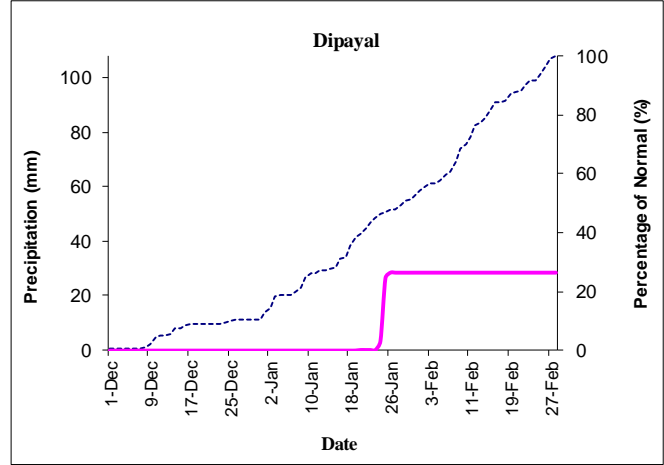
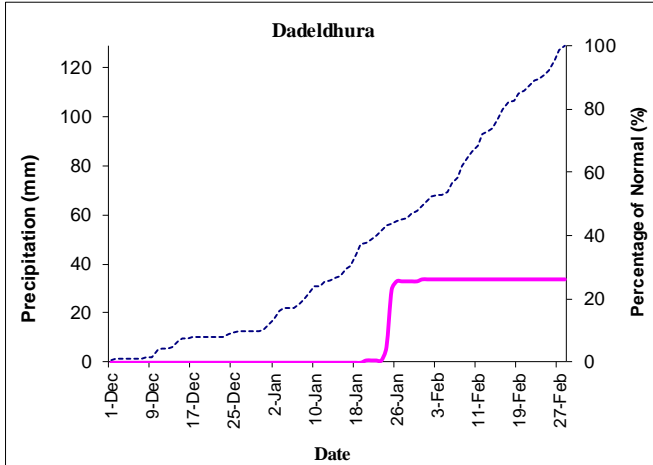
Government of Nepal
Ministry of Energy, Water Resource and Irrigation
Department of Hydrology and Meteorology
Climate Division (Climate Analysis Section)
Babarmahal, Kathmandu

28th February 2023

Winter (December 2022-February 2023) Precipitation Monitoring

— Daily accumulated precipitation

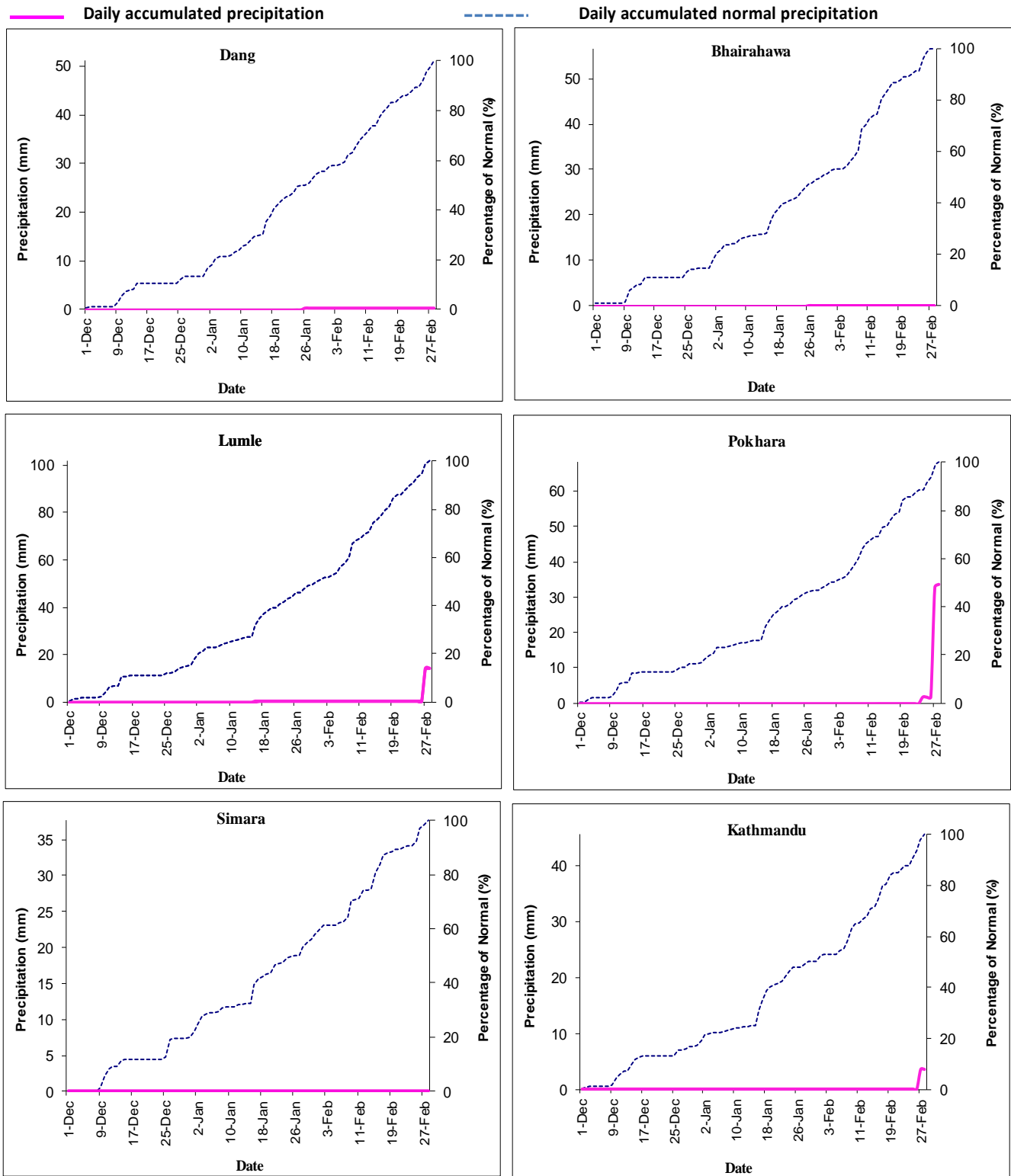
----- Daily accumulated normal precipitation



Note: The blue dotted lines (-----) in the above graphs indicate daily accumulated normal precipitation during Winter season. Normal rainfall is the average of precipitation over 30 years period from 1991 - 2020 and pink lines (—) in above graphs indicate the daily accumulated precipitation of this Winter season.



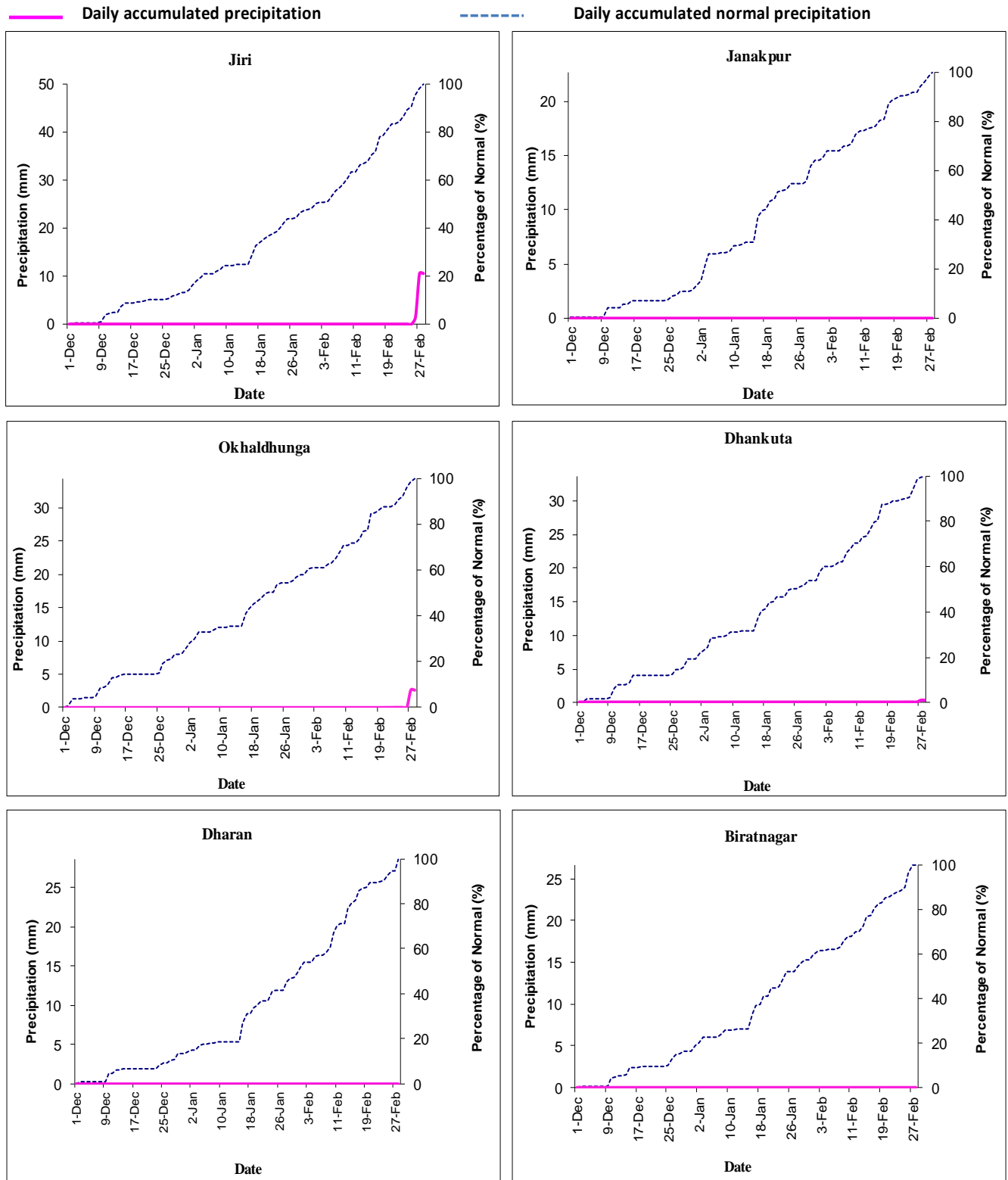
Government of Nepal
Ministry of Energy, Water Resource and Irrigation
Department of Hydrology and Meteorology
Climate Division (Climate Analysis Section)
Babarmahal, Kathmandu



Note: The blue dotted lines (-----) in the above graphs indicate daily accumulated normal precipitation during Winter season. Normal rainfall is the average of precipitation over 30 years period from 1991 - 2020 and pink lines (—) in above graphs indicate the daily accumulated precipitation of this Winter season.



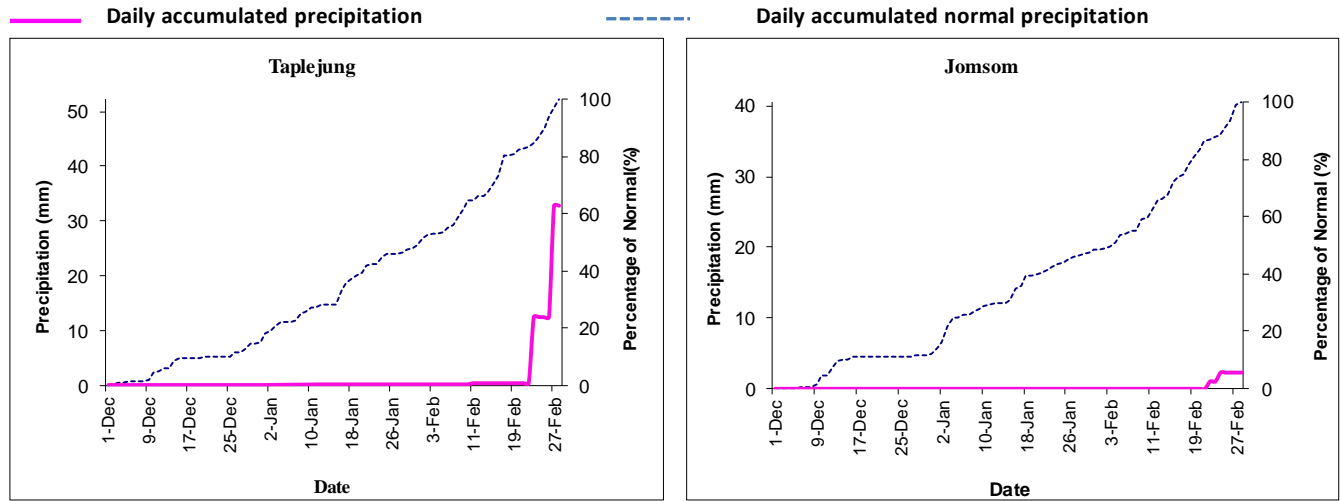
Government of Nepal
Ministry of Energy, Water Resource and Irrigation
Department of Hydrology and Meteorology
Climate Division (Climate Analysis Section)
Babarmahal, Kathmandu



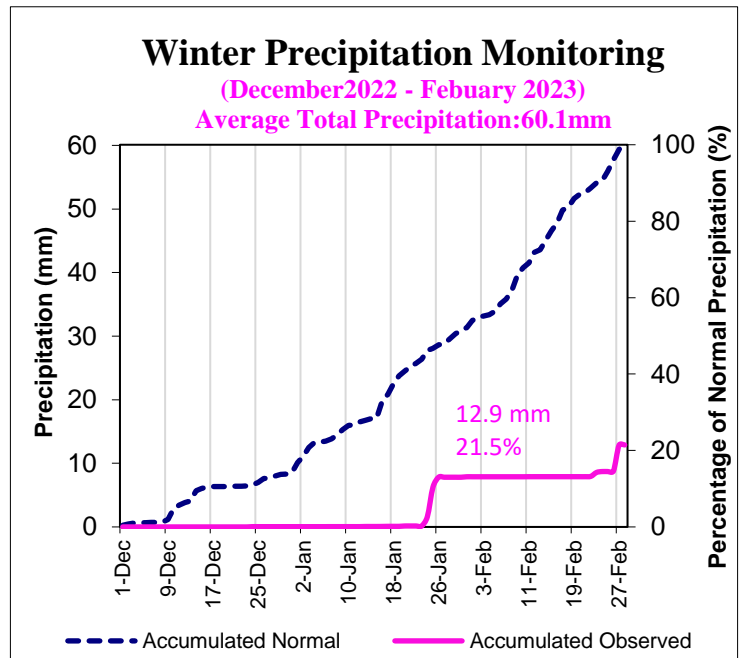
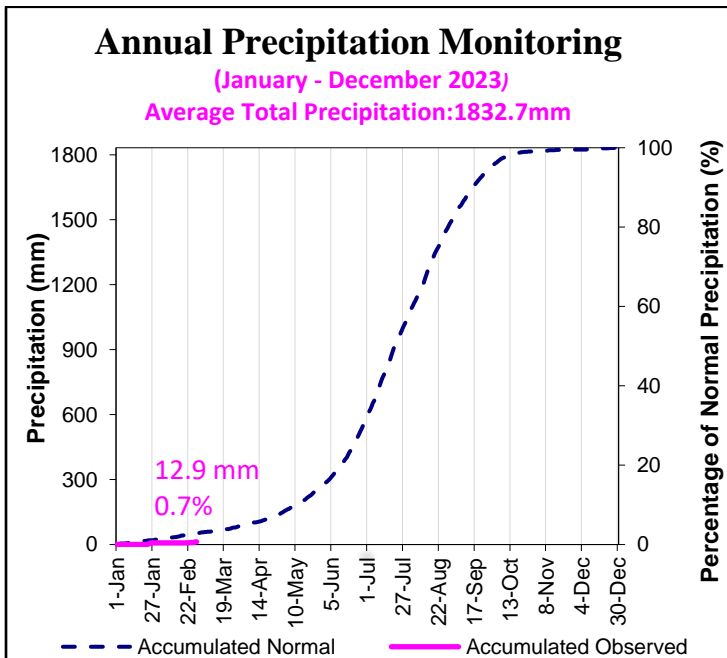
Note: The blue dotted lines (-----) in the above graphs indicate daily accumulated normal precipitation during Winter season. Normal rainfall is the average of precipitation over 30 years period from 1991 - 2020 and pink lines (—) in above graphs indicate the daily accumulated precipitation of this Winter season.



Government of Nepal
Ministry of Energy, Water Resource and Irrigation
Department of Hydrology and Meteorology
Climate Division (Climate Analysis Section)
 Babarmahal, Kathmandu



Note: The blue dotted lines (-----) in the above graphs indicate daily accumulated normal precipitation during Winter season. Normal rainfall is the average of precipitation over 30 years period from 1991 - 2020 and pink lines (—) in above graphs indicate the daily accumulated precipitation of this Winter season.

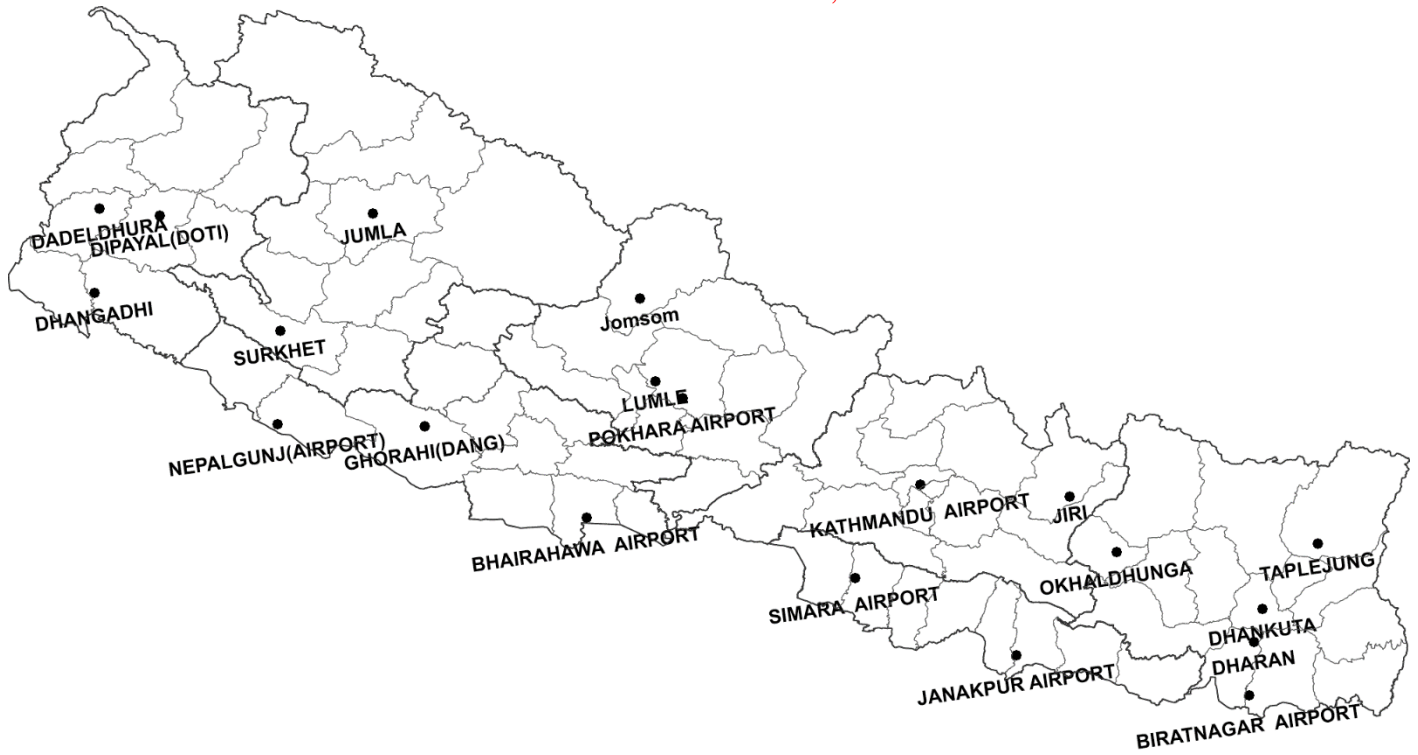


In the above graph, blue dashed (-----) line indicates the average of daily accumulated normal precipitation of 20 stations throughout the year (Jan - Dec) and pink solid line (—) indicates the average of daily accumulated precipitation of this year. The 20 stations are shown in the map below.

In the above graph, blue dashed (-----) line indicates the average of daily accumulated normal precipitation of 20 stations during Winter season (December 2022-February 2023) and pink solid line (—) indicates the average of daily accumulated precipitation of this Winter Season. The 20 stations are shown in the map below.



Government of Nepal
Ministry of Energy, Water Resource and Irrigation
Department of Hydrology and Meteorology
Climate Division (Climate Analysis Section)
Babarmahal, Kathmandu



Map: Location map of 20 stations used in the above graphs