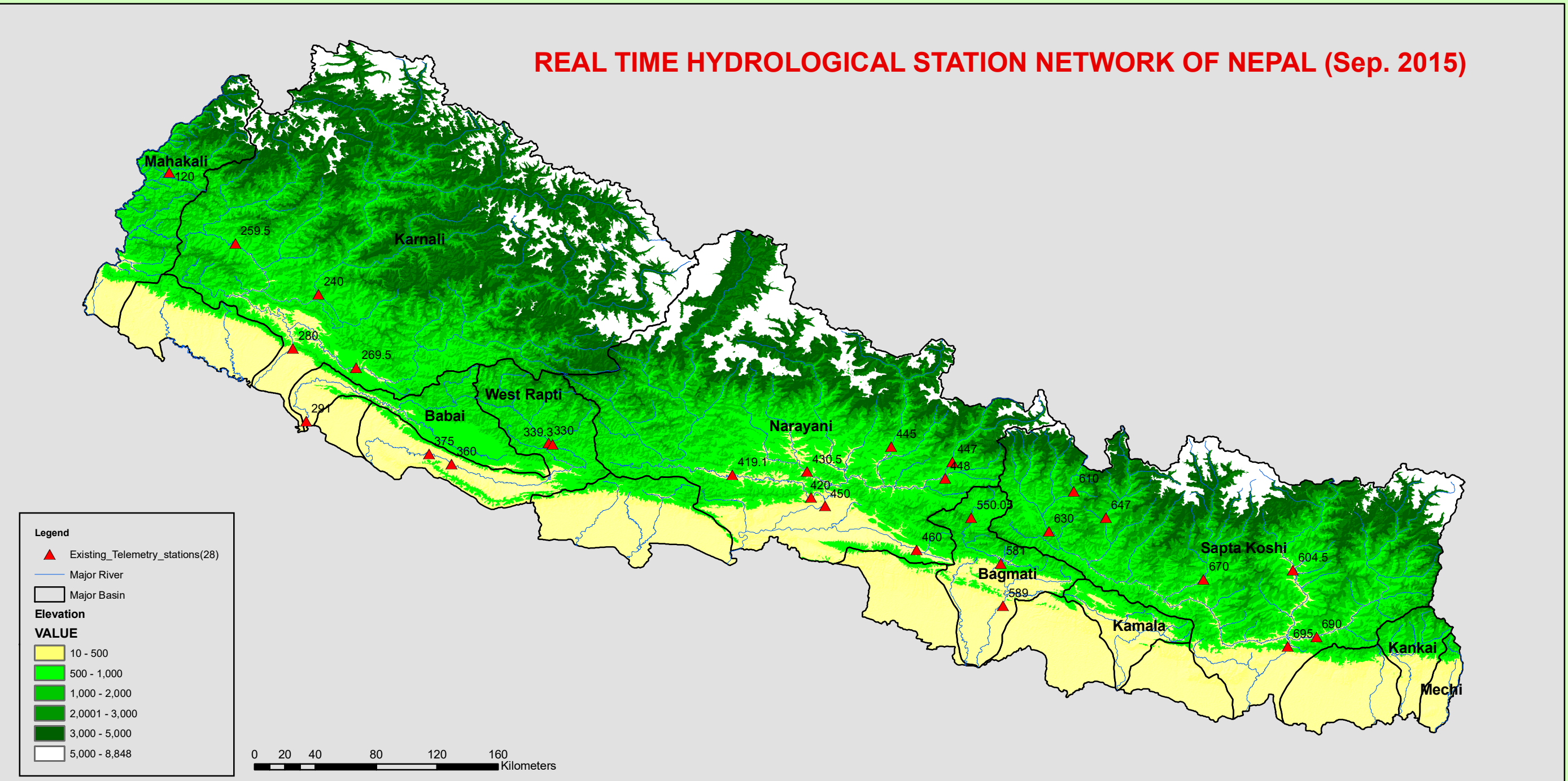
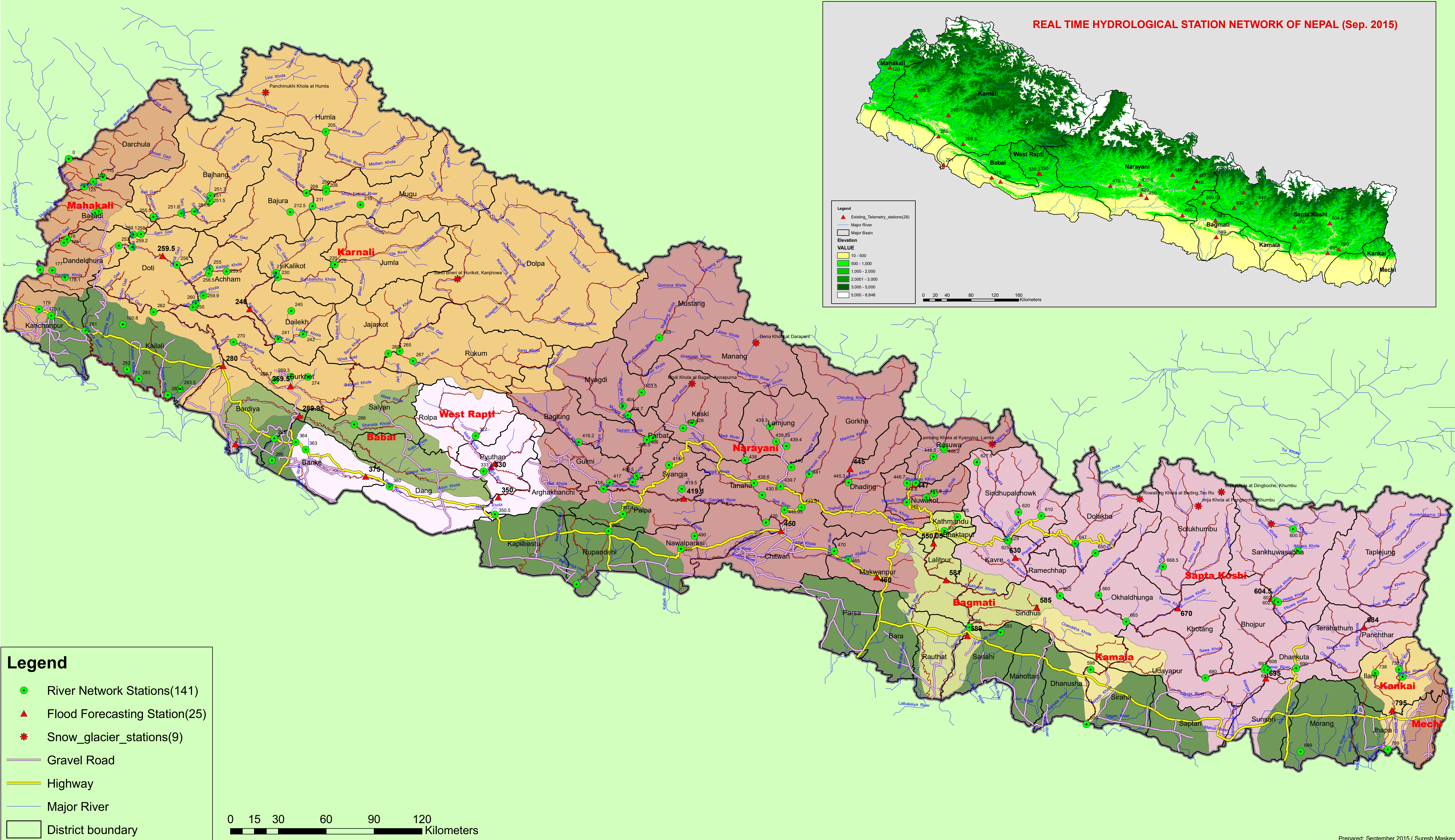
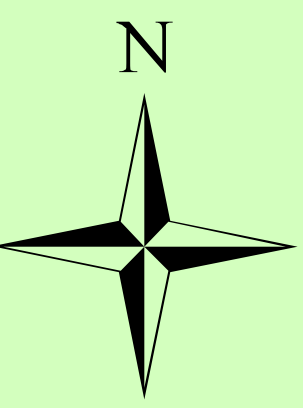


Government of Nepal
Ministry of Science, Technology & Environment
Department of Hydrology & Meteorology
Hydrological Network of Nepal (Sept. 2015)



Legend

- River Network Stations(141)
- Flood Forecasting Station(25)
- Snow_glacier_stations(9)
- Gravel Road
- Highway
- Major River
- District boundary